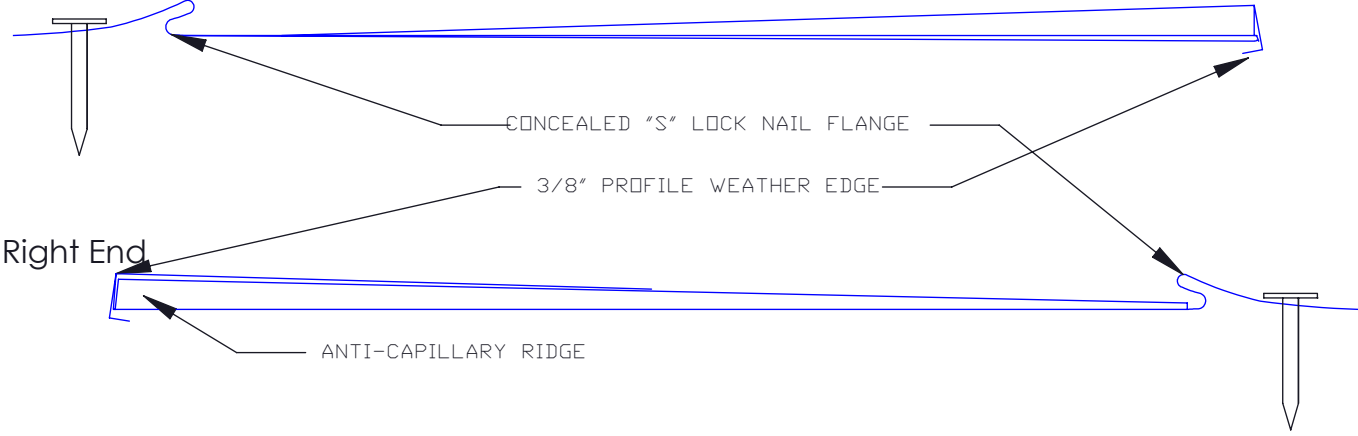
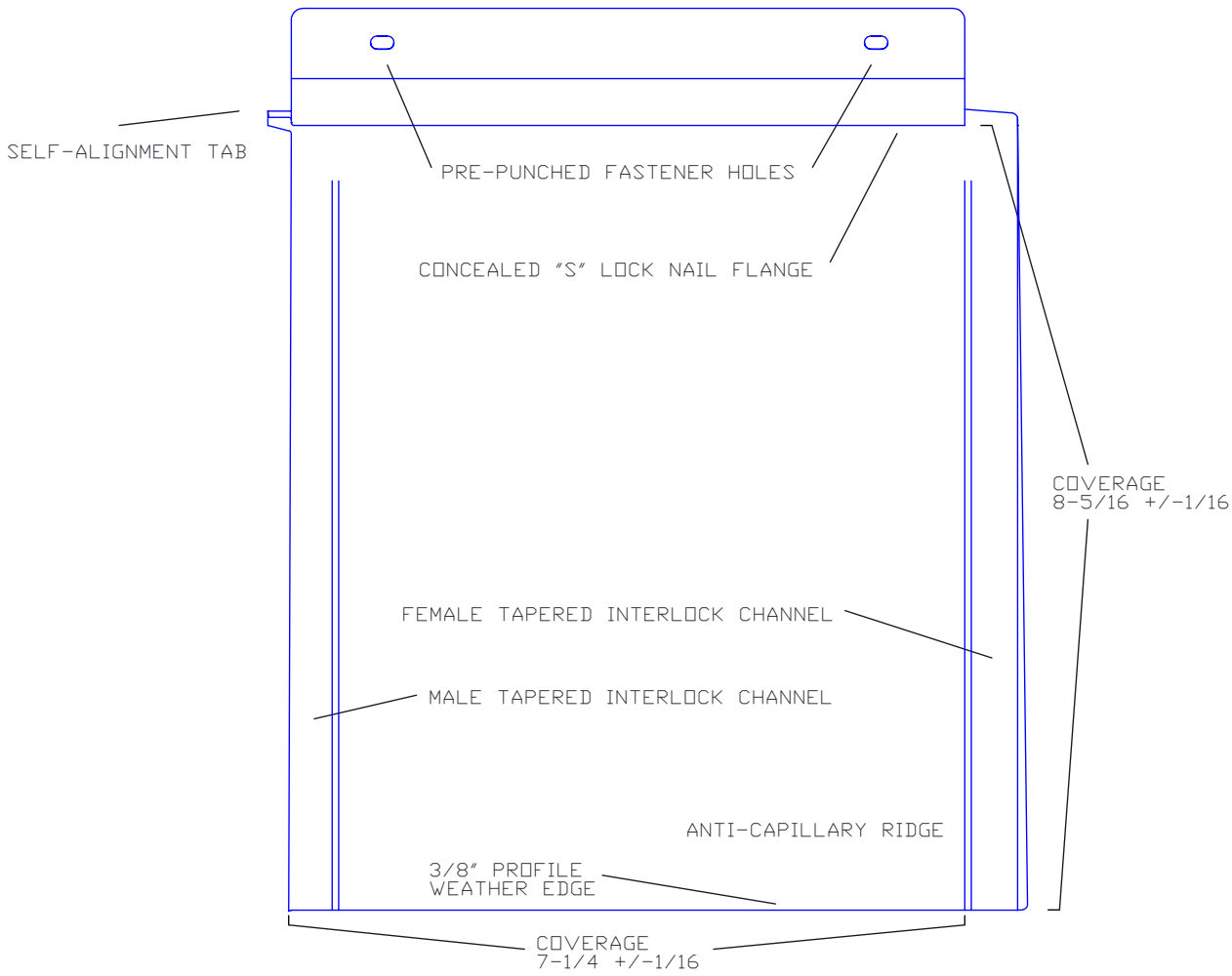


Left End




Right End



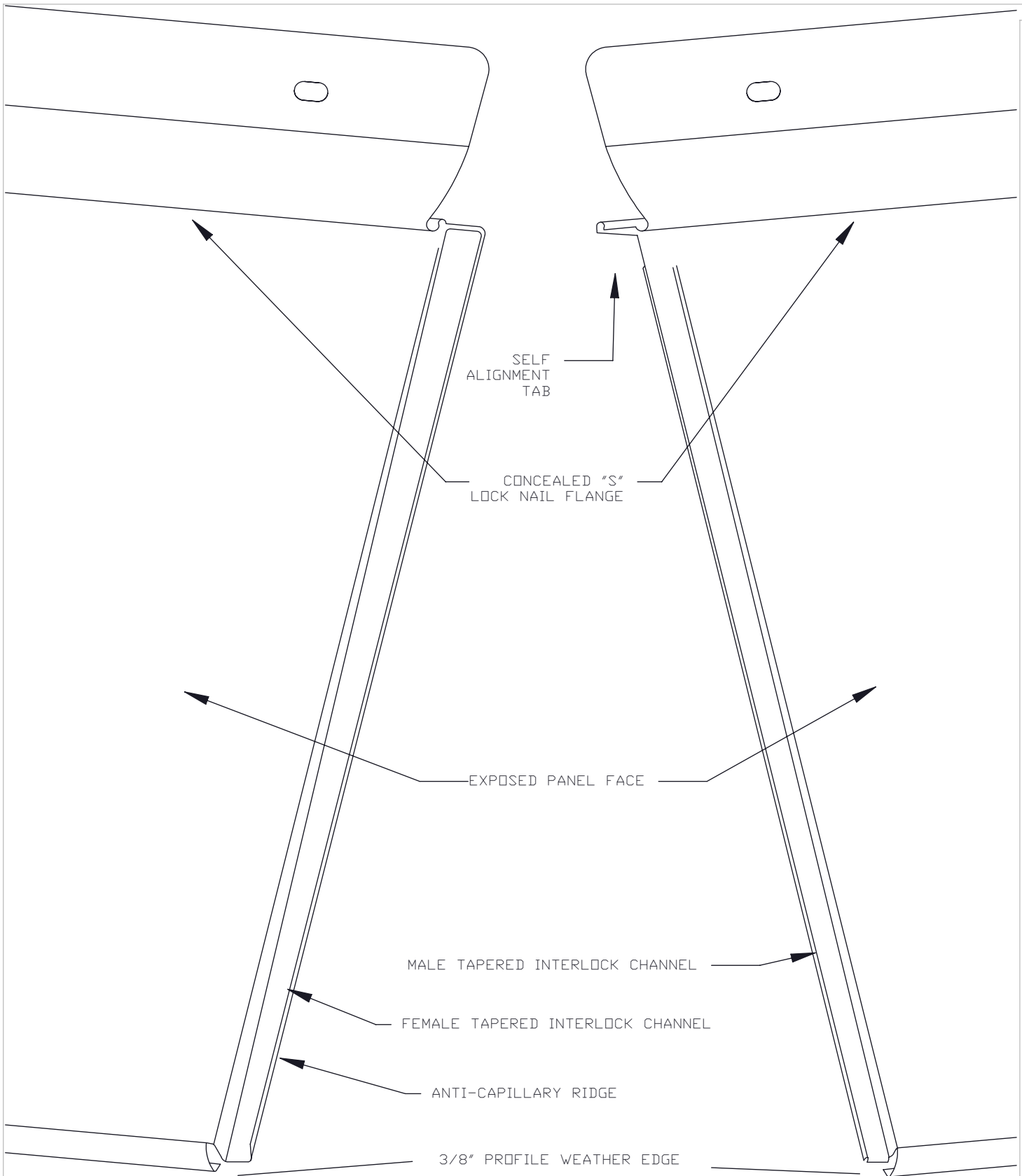
Diamond Tile

## Profile Details

1


 <b>MILLENNIUM</b> F O R M S	Material	Sizes	Finish	Colors
	Stainless Steel	7-1/4" x 8- 5/16" 0.018" +/- .002	Bright (BA) Mill (2B)	See color selection chart
Zalmag	7-1/4" x 8- 5/16" 0.018" +/- .002	Natural Pre-Patina II	See color selection chart	

Revised 2017

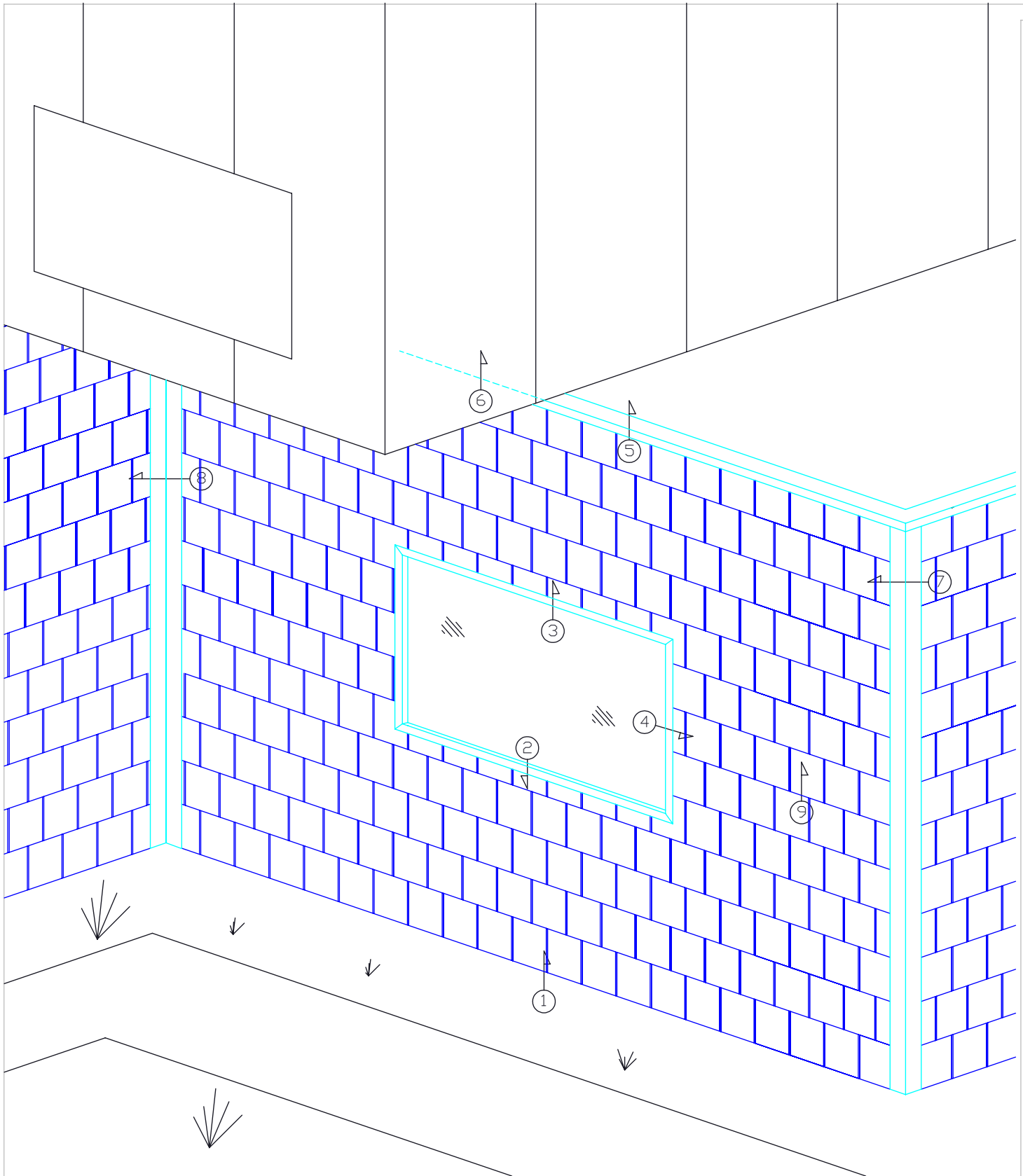


### Vertical Joint Detail

2

 <b>MILLENNIUM</b> F O R M S	Material	Sizes	Finish	Colors
	Stainless Steel	7-1/4" x 8- 5/16" 0.018" +/- .002	Bright (BA) Mill (2B)	See color selection chart
Zalmag	7-1/4" x 8- 5/16" 0.018" +/- .002	Natural Pre-Patina II	See color selection chart	


Revised 2017



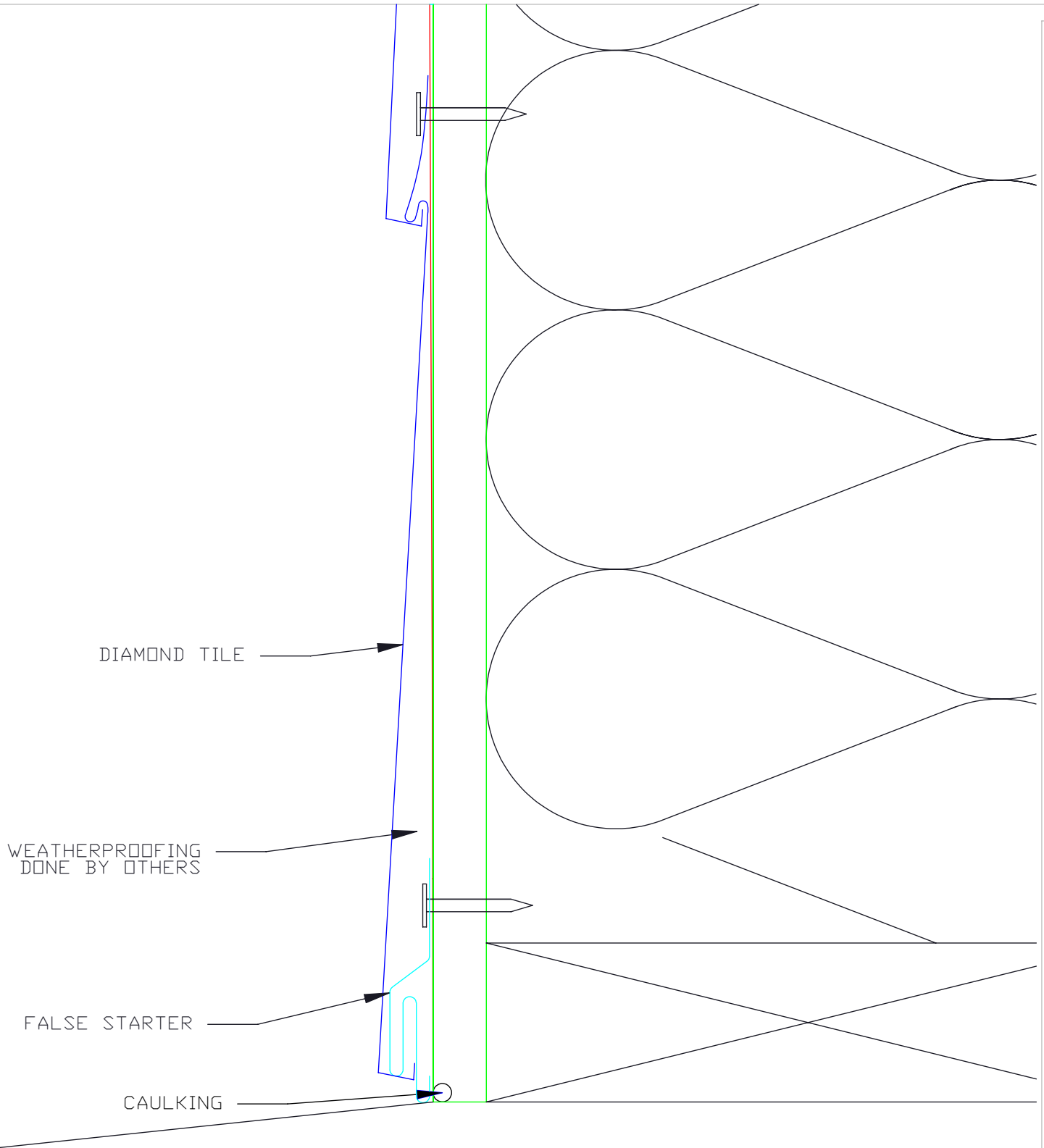
Diamond Tile

### Detail Wall

3


 <b>MILLENNIUM</b> F O R M S	Material	Sizes	Finish	Colors
	Stainless Steel	7-1/4" x 8- 5/16" 0.018" +/- .002	Bright (BA) Mill (2B)	See color selection chart
Zalmag	7-1/4" x 8- 5/16" 0.018" +/- .002	Natural Pre-Patina II	See color selection chart	

Revised 2017

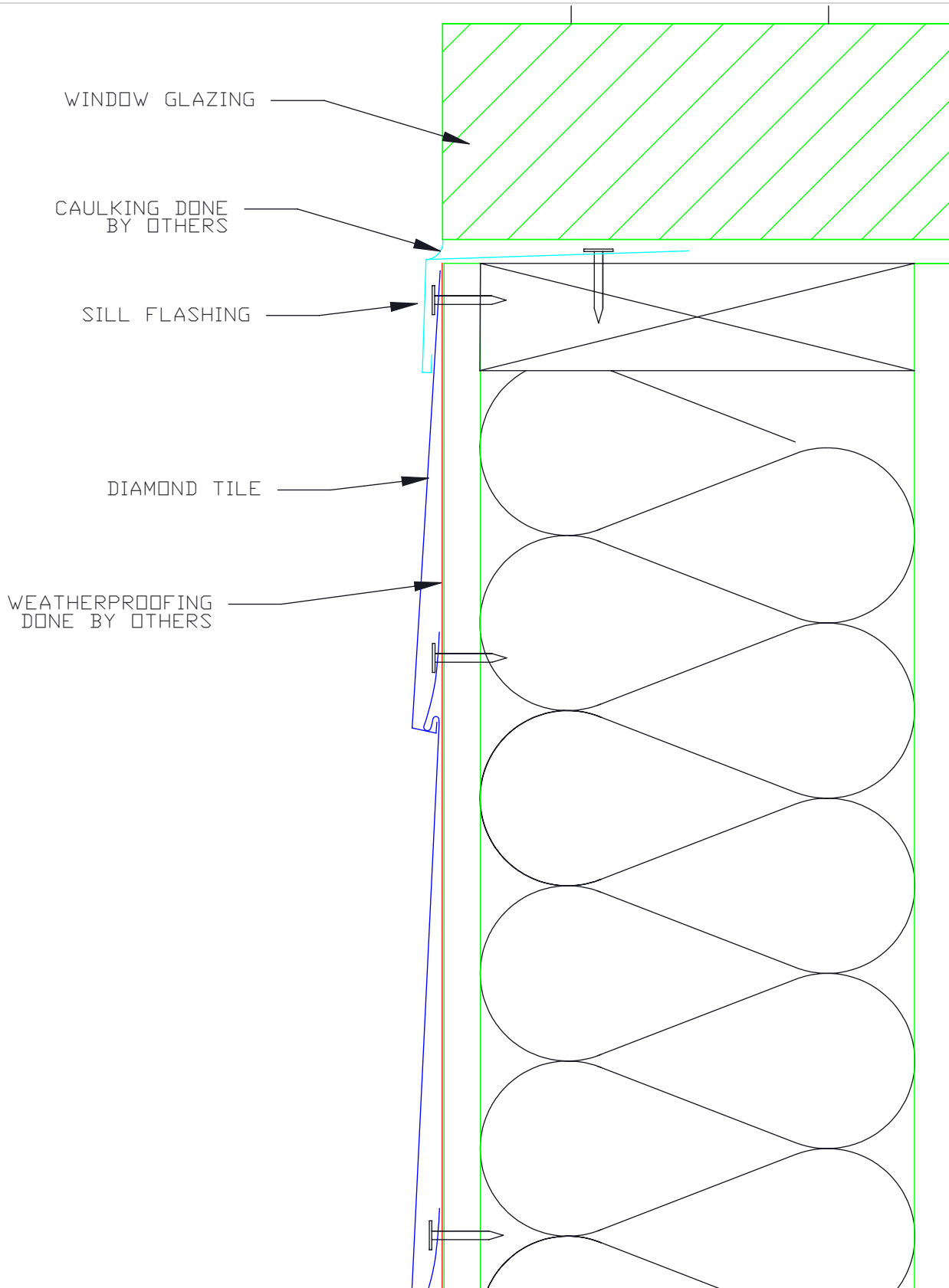


### Starter/ False Starter

4

 <b>MILLENNIUM</b> F O R M S	Material	Sizes	Finish	Colors
	Stainless Steel	7-1/4" x 8- 5/16" 0.018" +/- .002	Bright (BA) Mill (2B)	See color selection chart
Zalmag	7-1/4" x 8- 5/16" 0.018" +/- .002	Natural Pre-Patina II	See color selection chart	


Revised 2017



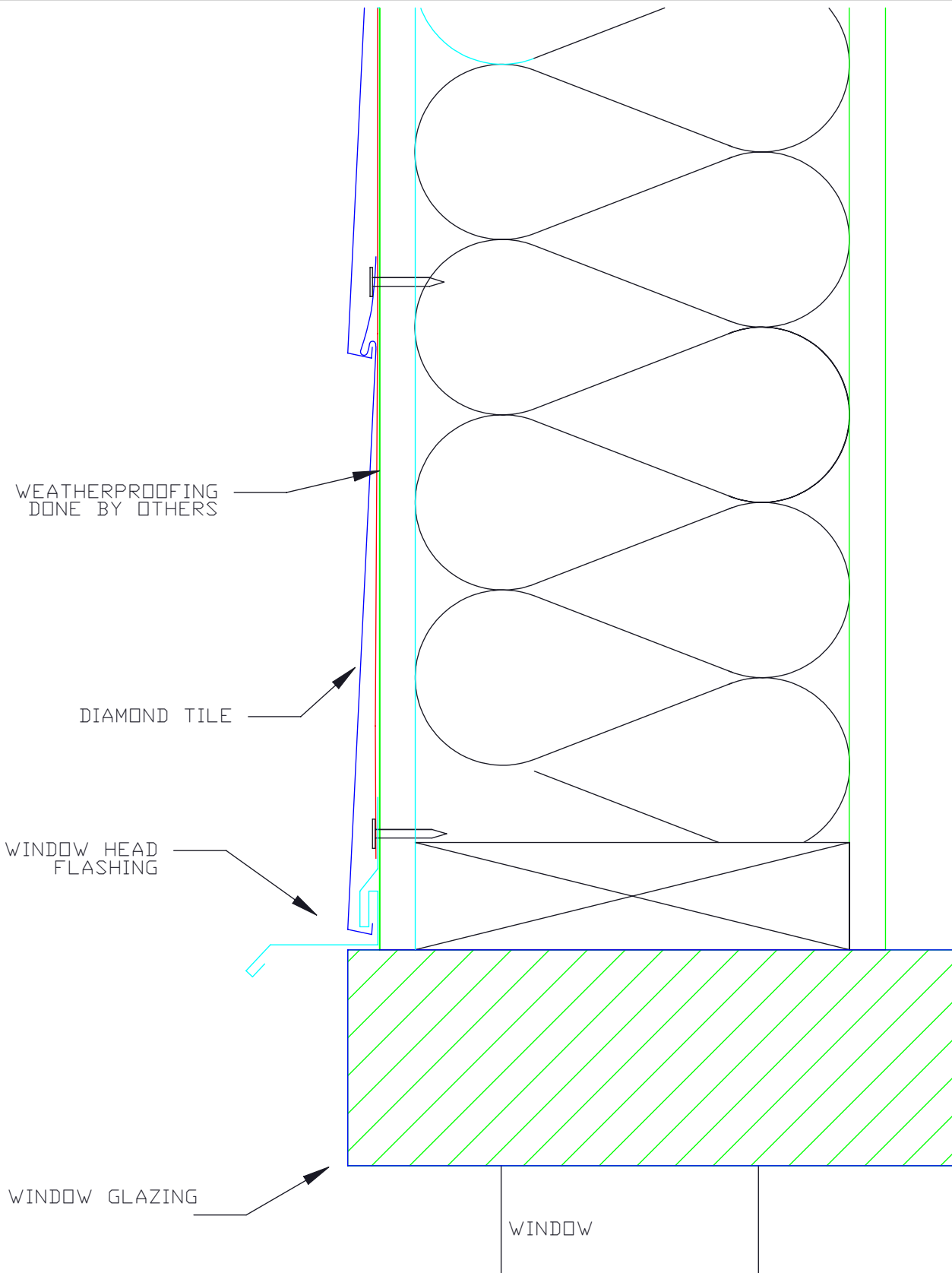
Diamond Tile

**Window Sill**

5


 <b>MILLENNIUM</b> F O R M S	Material	Sizes	Finish	Colors
	Stainless Steel	7-1/4" x 8- 5/16" 0.018" +/- .002	Bright (BA) Mill (2B)	See color selection chart
Zalmag	7-1/4" x 8- 5/16" 0.018" +/- .002	Natural Pre-Patina II	See color selection chart	

Revised 2017



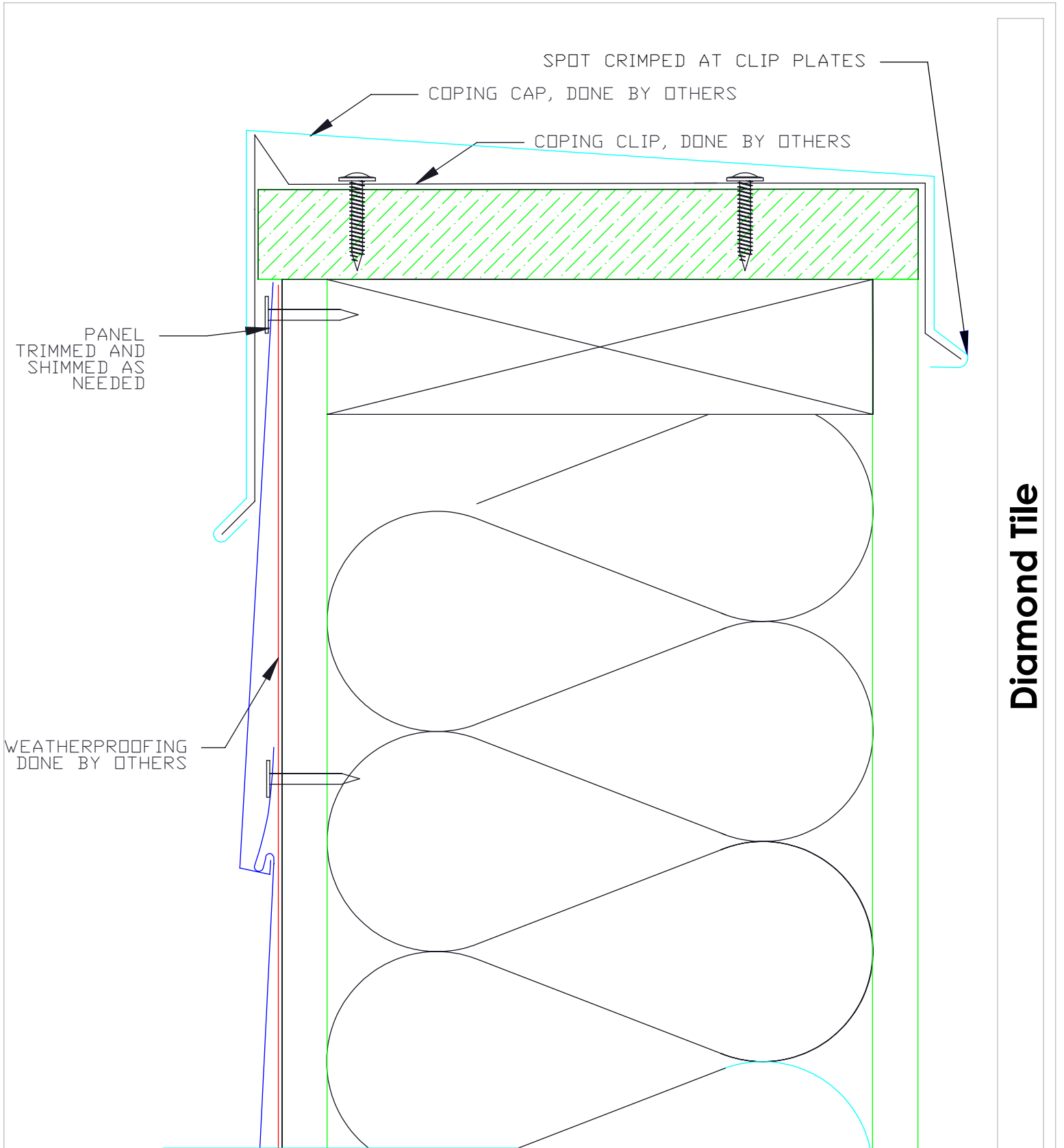
### Window Head

6

 <b>MILLENNIUM</b> F O R M S	Material	Sizes	Finish	Colors
	Stainless Steel	7-1/4" x 8- 5/16" 0.018" +/- .002	Bright (BA) Mill (2B)	See color selection chart
Zalmag	7-1/4" x 8- 5/16" 0.018" +/- .002	Natural Pre-Patina II	See color selection chart	

Revised 2017






Diamond Tile

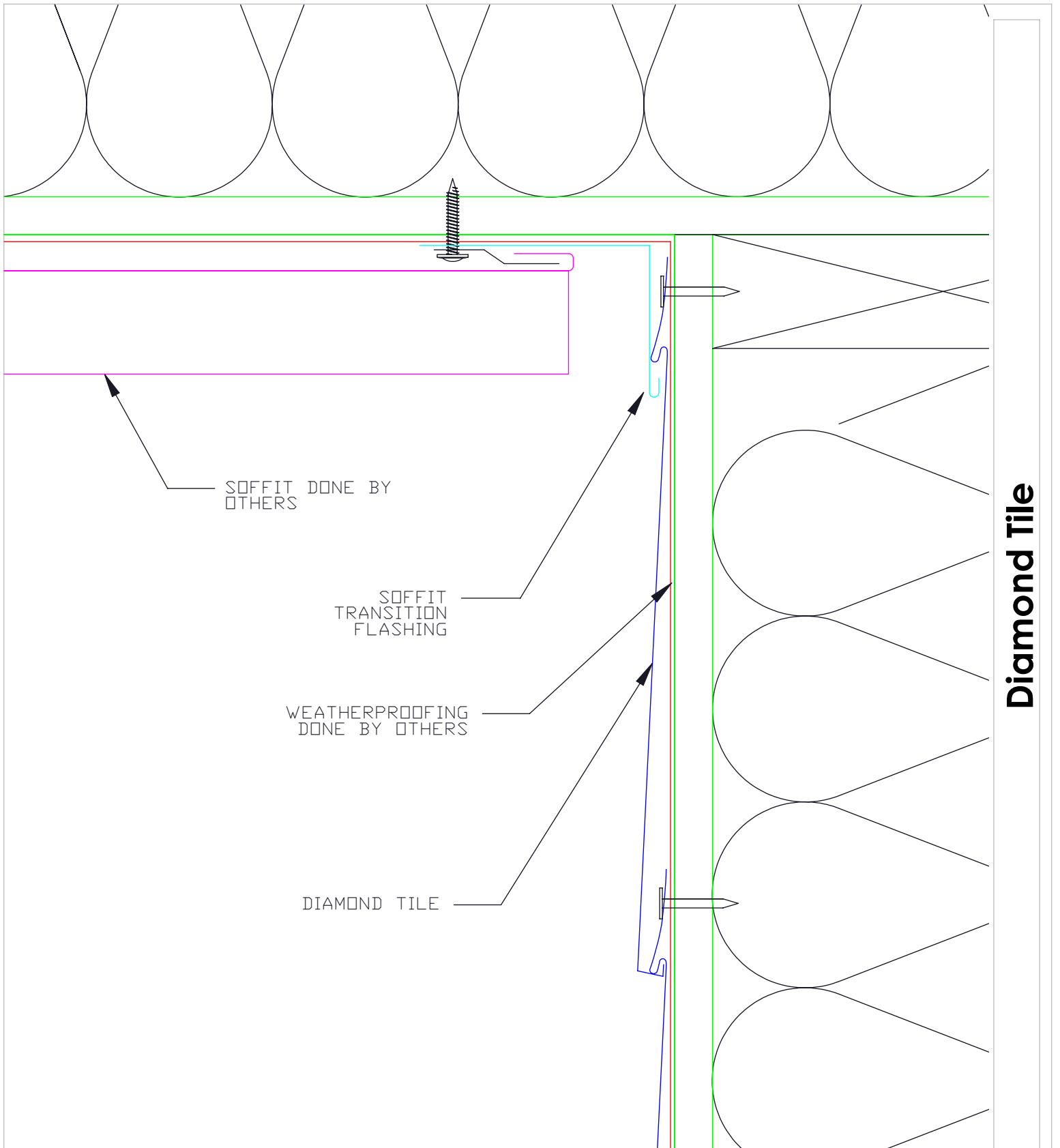
**Coping**

8

 <b>MILLENNIUM</b> F O R M S	Material	Sizes	Finish	Colors
	Stainless Steel	7-1/4" x 8- 5/16" 0.018" +/- .002	Bright (BA) Mill (2B)	See color selection chart
Zalmag	7-1/4" x 8- 5/16" 0.018" +/- .002	Natural Pre-Patina II	See color selection chart	

Revised 2017






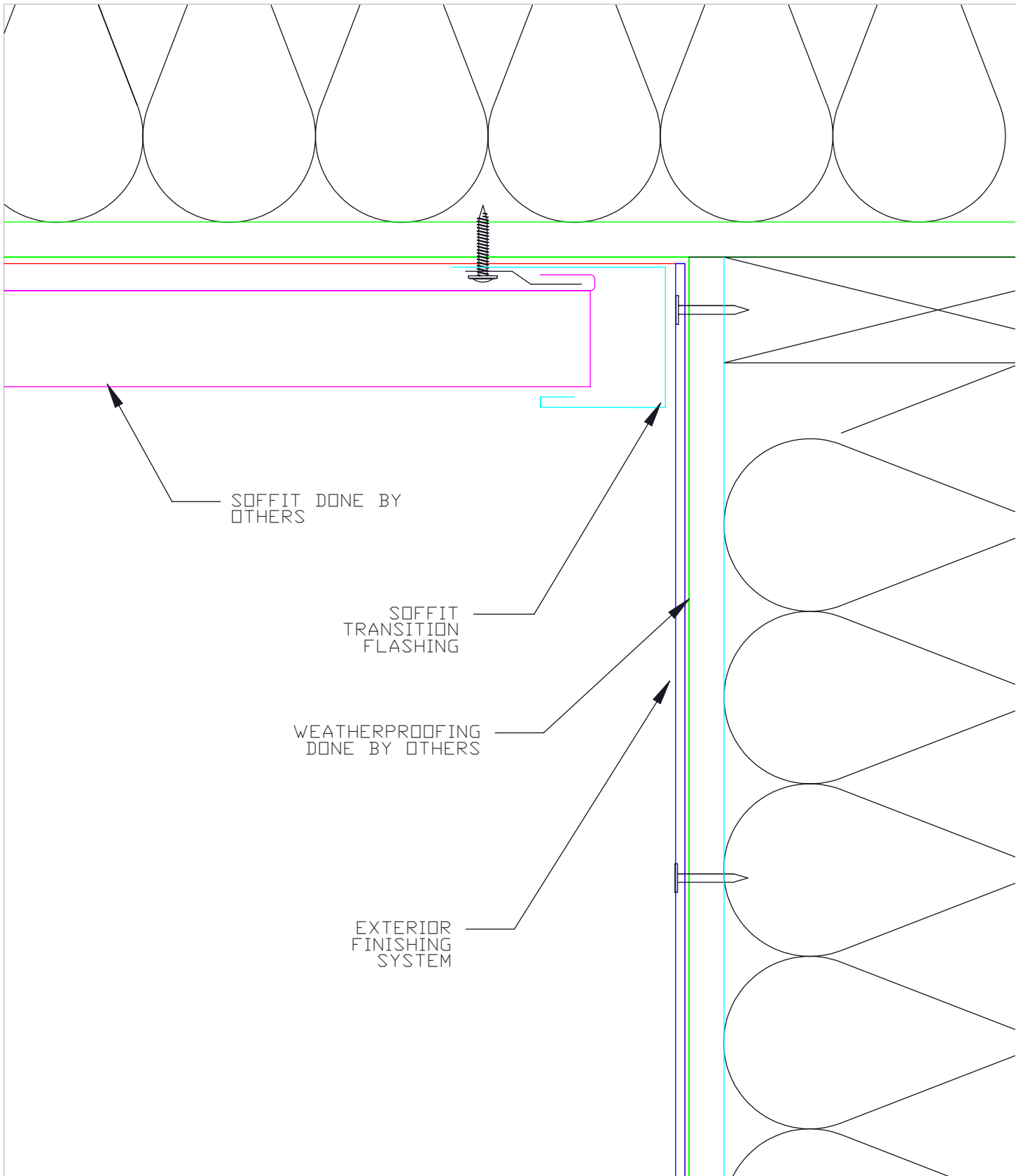
**Diamond Tile**

## Soffit Termination

9

 <b>MILLENNIUM</b> F O R M S	Material	Sizes	Finish	Colors
	Stainless Steel	7-1/4" x 8- 5/16" 0.018" +/- .002	Bright (BA) Mill (2B)	See color selection chart
Zalmag	7-1/4" x 8- 5/16" 0.018" +/- .002	Natural Pre-Patina II	See color selection chart	


Revised 2017



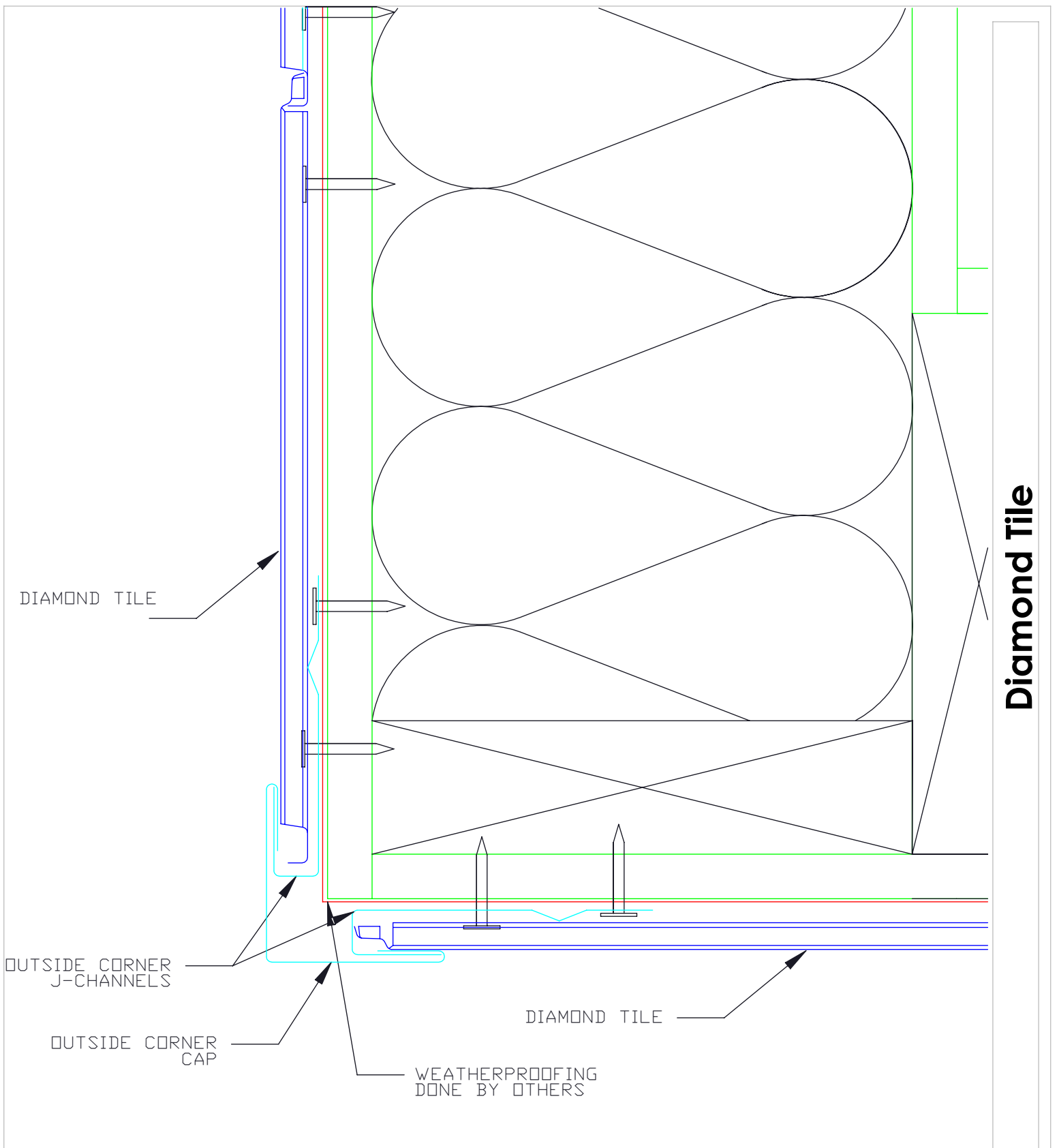
Diamond Tile

### Soffit Termination II

10

 <b>MILLENNIUM</b> F O R M S	Material	Sizes	Finish	Colors
	Stainless Steel	7-1/4" x 8- 5/16" 0.018" +/- .002	Bright (BA) Mill (2B)	See color selection chart
Zalmag	7-1/4" x 8- 5/16" 0.018" +/- .002	Natural Pre-Patina II	See color selection chart	


Revised 2017



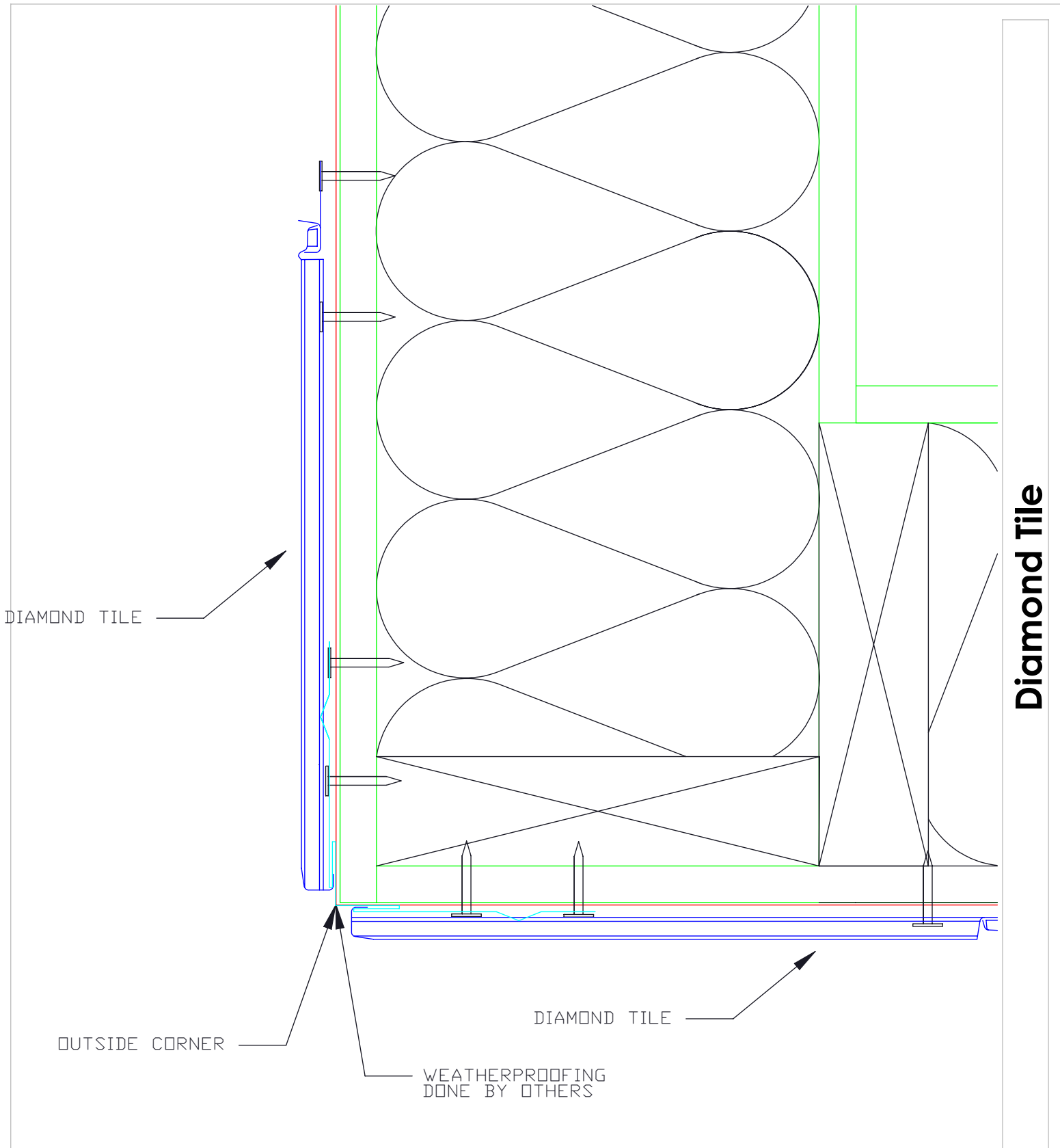
Diamond Tile

### 3 Piece Outside Corner

11

 <b>MILLENNIUM</b> F O R M S	Material	Sizes	Finish	Colors
	Stainless Steel	7-1/4" x 8- 5/16" 0.018" +/- .002	Bright (BA) Mill (2B)	See color selection chart
Zalmag	7-1/4" x 8- 5/16" 0.018" +/- .002	Natural Pre-Patina II	See color selection chart	


Revised 2017



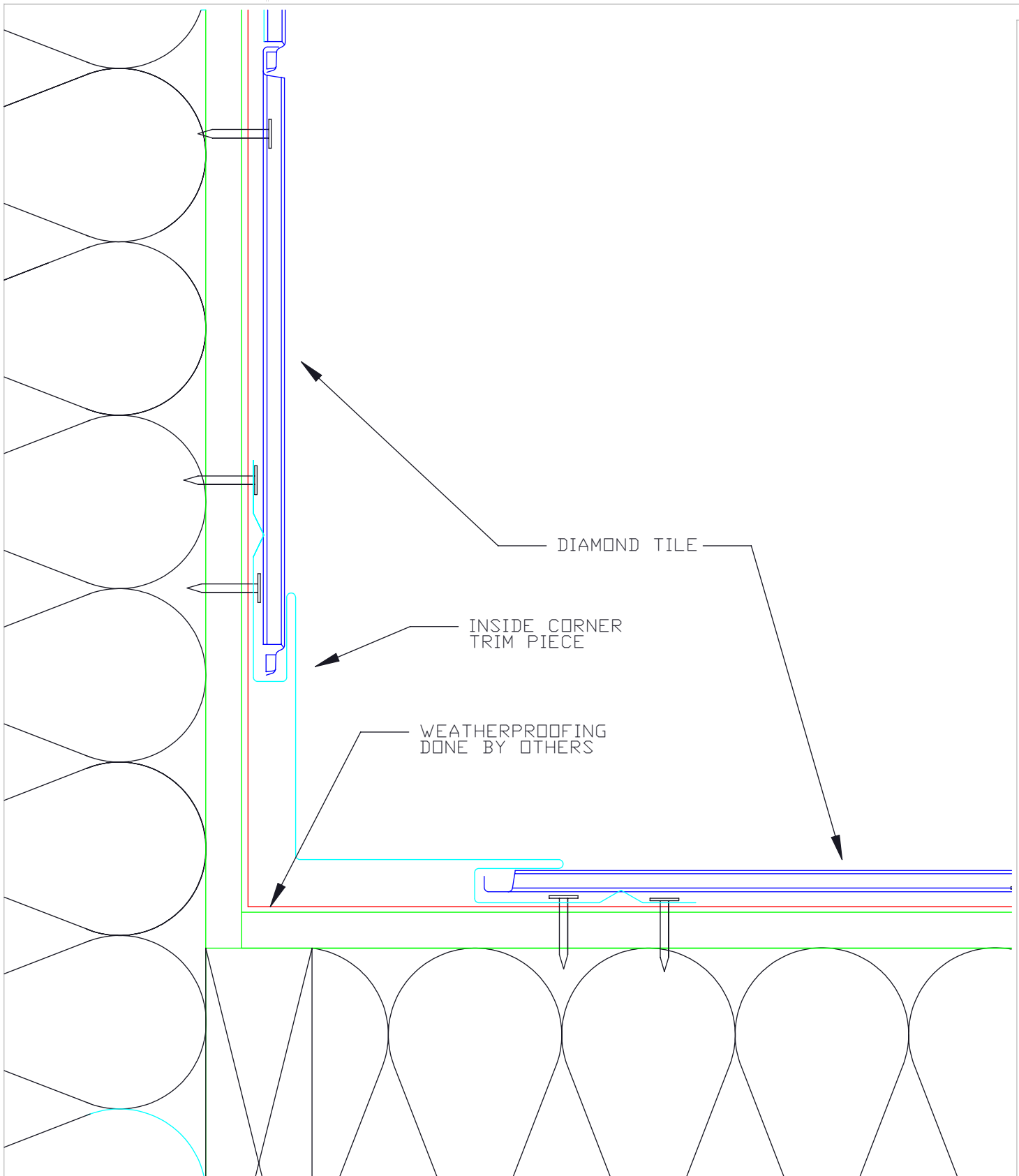
Diamond Tile

### 1 Piece Outside Corner

12

 <b>MILLENNIUM</b> F O R M S	Material	Sizes	Finish	Colors
	Stainless Steel	7-1/4" x 8- 5/16" 0.018" +/- .002	Bright (BA) Mill (2B)	See color selection chart
Zalmag	7-1/4" x 8- 5/16" 0.018" +/- .002	Natural Pre-Patina II	See color selection chart	


Revised 2017



**Diamond Tile**

**1 Piece Inside Corner**

13

 <b>MILLENNIUM</b> F O R M S	Material	Sizes	Finish	Colors
	Stainless Steel	7-1/4" x 8- 5/16" 0.018" +/- .002	Bright (BA) Mill (2B)	See color selection chart
Zalmag	7-1/4" x 8- 5/16" 0.018" +/- .002	Natural Pre-Patina II	See color selection chart	

Revised 2017

ZEE ATTACHMENT  
MAY BE RAN  
VERTICALLY OR  
HORIZONTALLY,  
HORIZONTAL ZEE  
MUST PROVIDE  
DRAINAGE


25 PSI FOAM

STUD

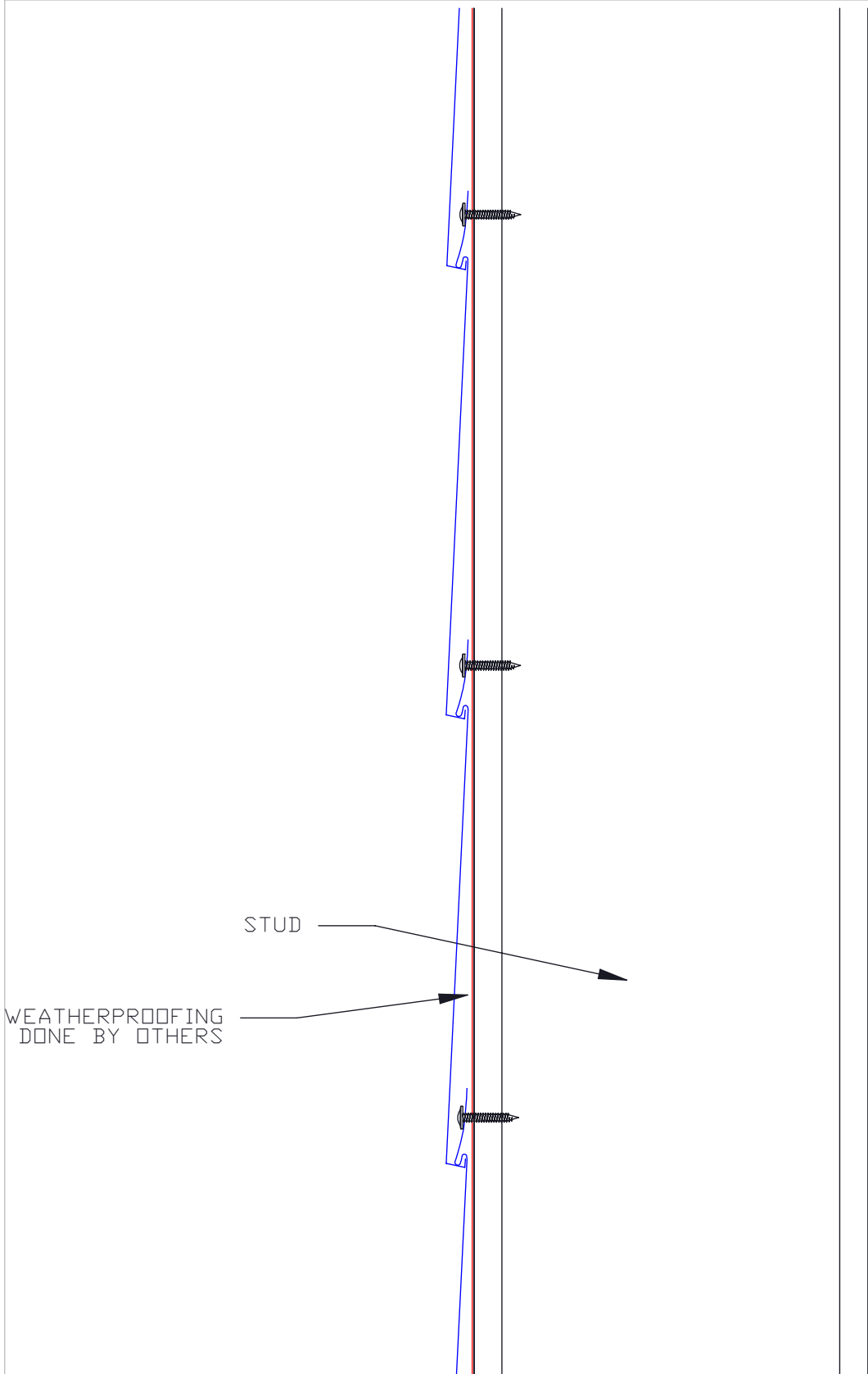
WEATHERPROOFING  
DONE BY OTHERS

### Exterior Insulation

14


 <b>MILLENNIUM</b> F O R M S	Material	Sizes	Finish	Colors
	Stainless Steel	7-1/4" x 8- 5/16" 0.018" +/- .002	Bright (BA) Mill (2B)	See color selection chart
Zalmag	7-1/4" x 8- 5/16" 0.018" +/- .002	Natural Pre-Patina II	See color selection chart	

Revised 2017



**Over Plywood**

15

 <b>MILLENNIUM</b> F O R M S	Material	Sizes	Finish	Colors
	Stainless Steel	7-1/4" x 8- 5/16" 0.018" +/- .002	Bright (BA) Mill (2B)	See color selection chart
Zalmag	7-1/4" x 8- 5/16" 0.018" +/- .002	Natural Pre-Patina II	See color selection chart	

Revised 2017