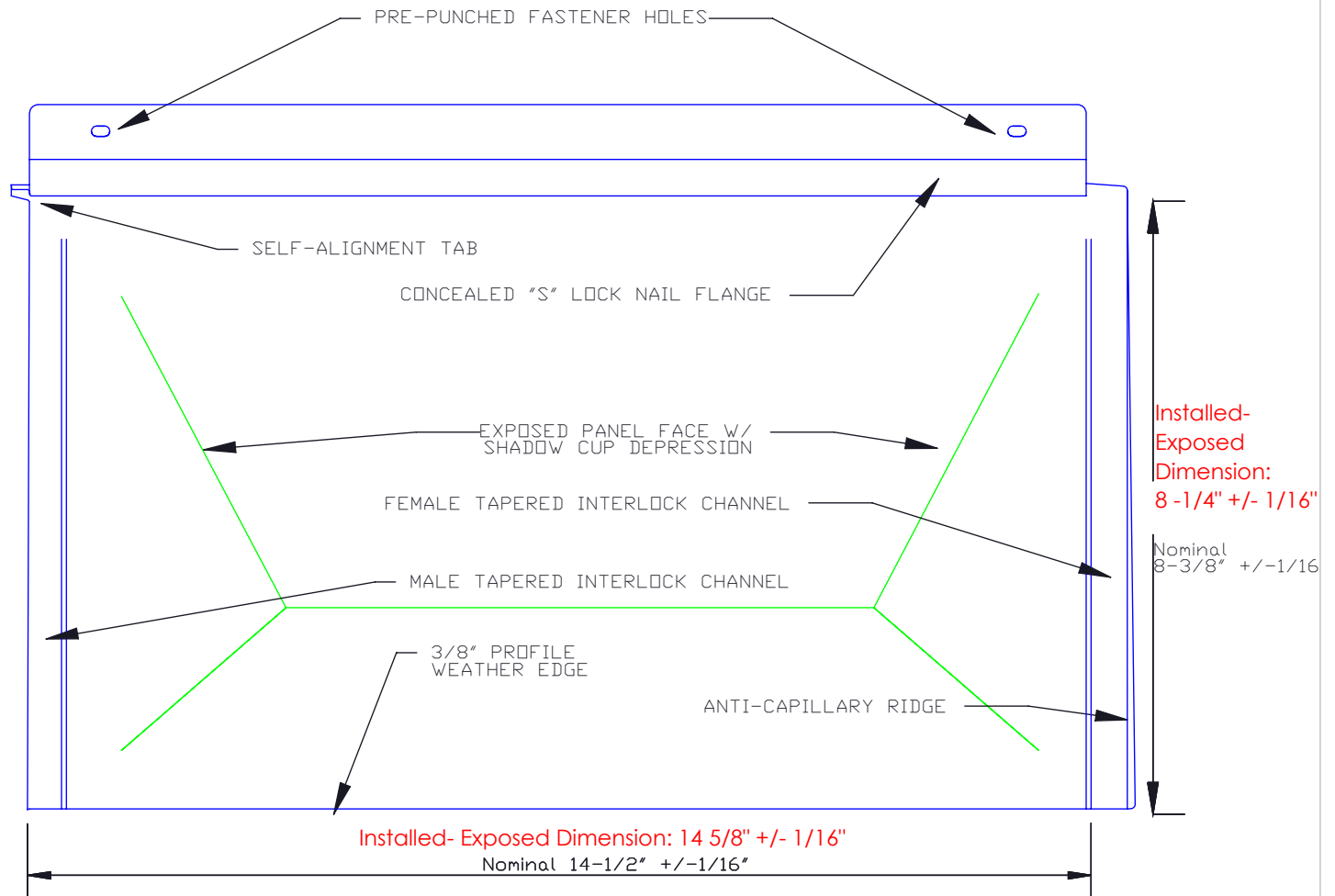
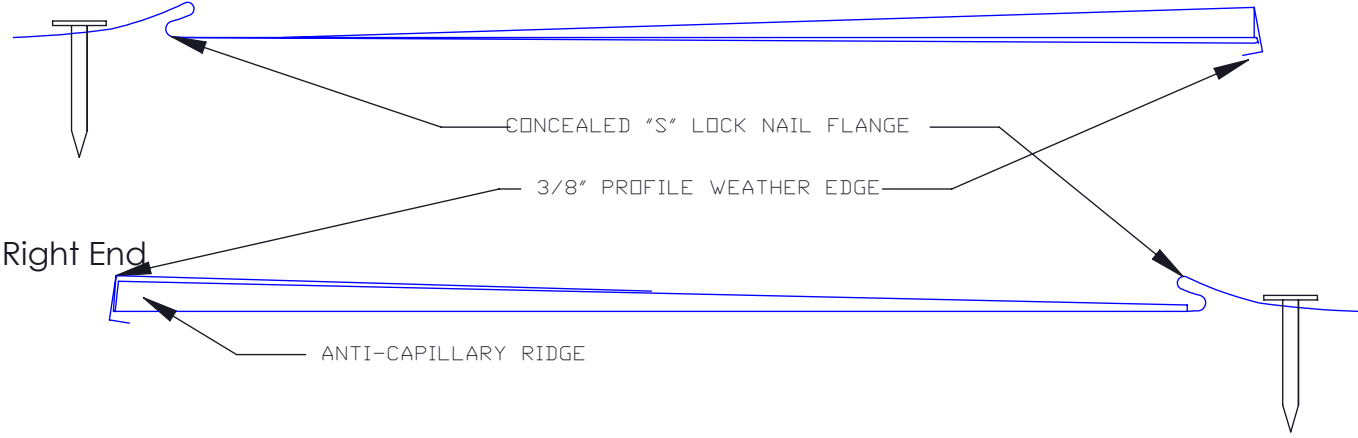



Left End



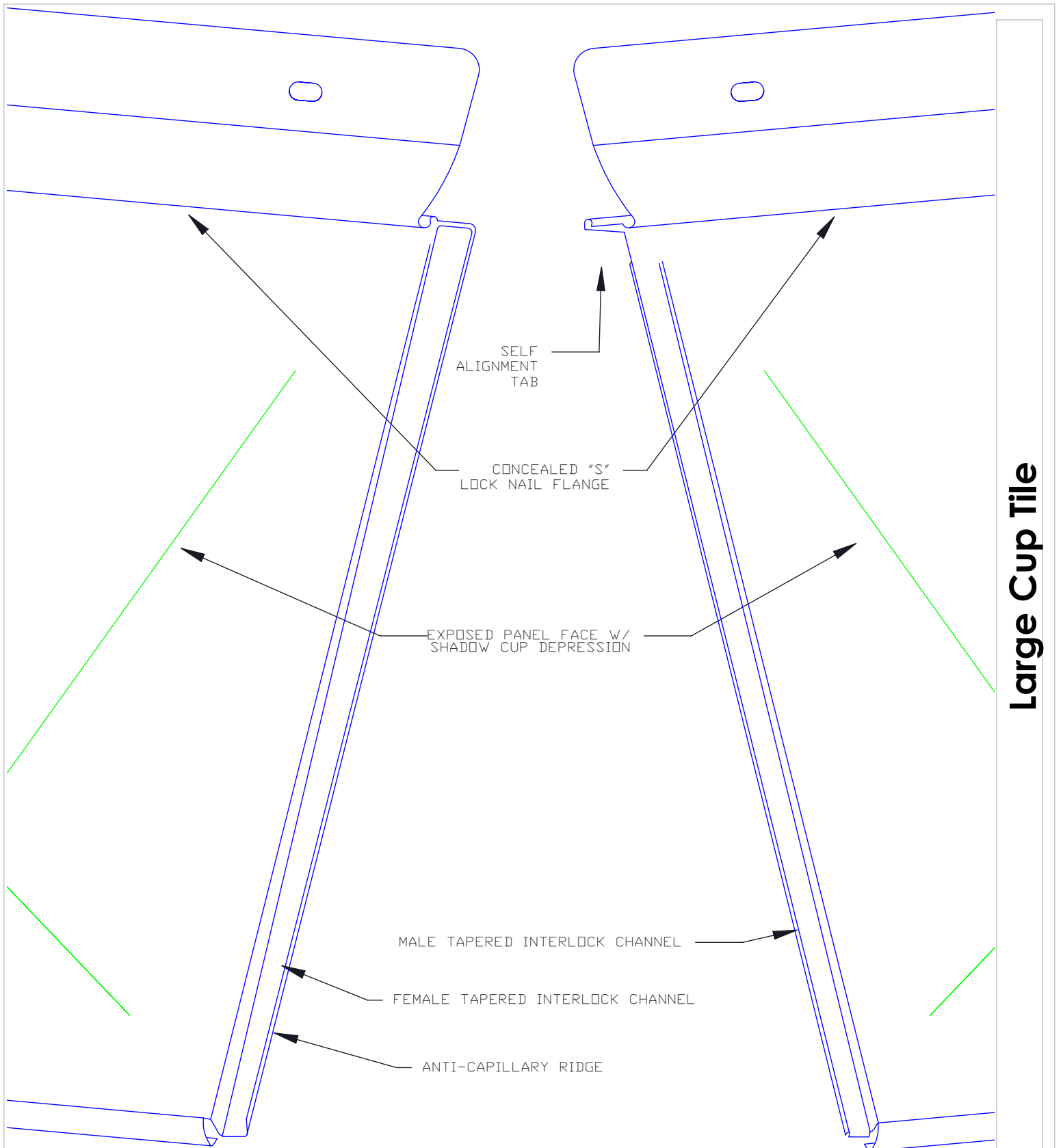
Large Cup Tile

**Profile Details**

1

 <b>MILLENNIUM</b> F O R M S	Material	Sizes	Finish	Colors
	Stainless Steel	8 3/8" x 14 1/2" 0.018" +/- .002	Bright (BA) Mill (2B)	See color selection chart
Zalmag	8 3/8" x 14 1/2" 0.018" +/- .002	Natural Pre-patina II Black	See color selection chart	


Revised 12/10/20



Large Cup Tile

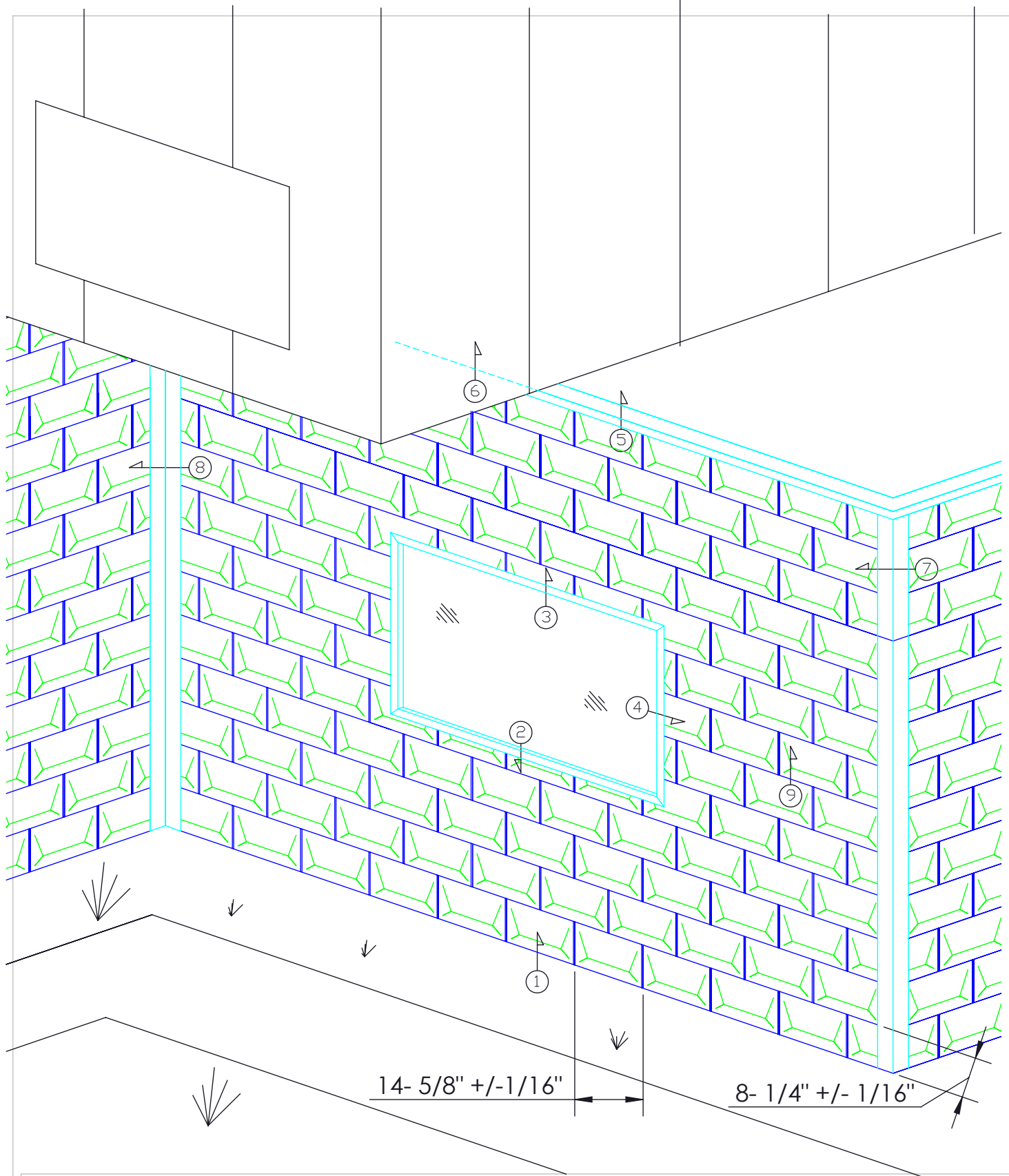
### Vertical Joint Detail

2

 <b>MILLENNIUM</b> F O R M S	Material	Sizes	Finish	Colors
	Stainless Steel	8 3/8" x 14 1/2" 0.018" +/- .002	Bright (BA) Mill (2B)	See color selection chart
Zalmag	8 3/8" x 14 1/2" 0.018" +/- .002	Natural Pre-patina II Black	See color selection chart	


Revised 12/10/20

**Large Cup Tile**

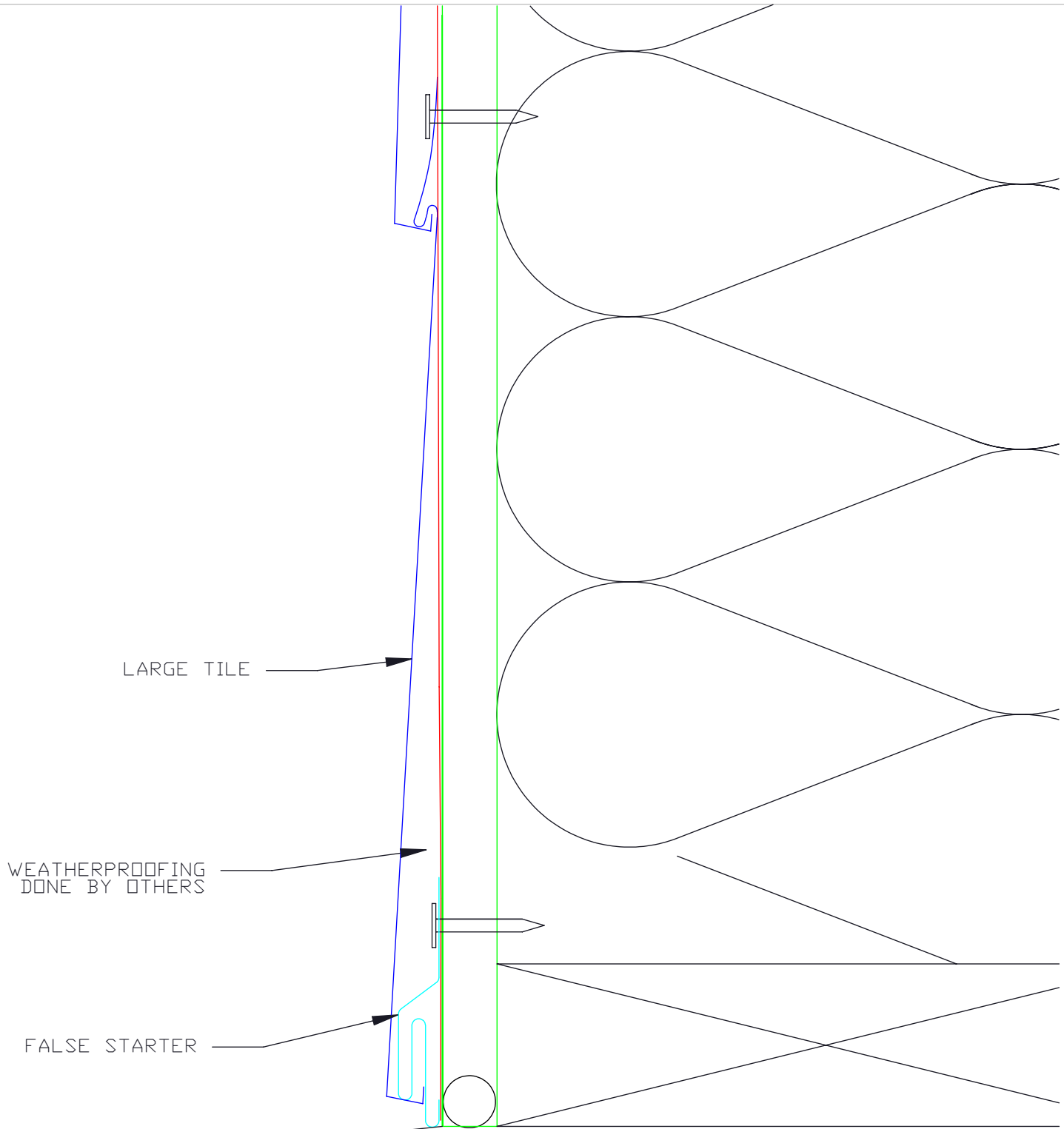


**Detail Wall**

3

	Material	Sizes	Finish	Colors
	Stainless Steel	8 3/8" x 14 1/2" 0.018" +/- .002	Bright (BA) Mill (2B)	See color selection chart
Zalmag	8 3/8" x 14 1/2" 0.018" +/- .002	Natural Pre-patina II Black	See color selection chart	

Revised 12/10/20




LARGE TILE

WEATHERPROOFING  
DONE BY OTHERS

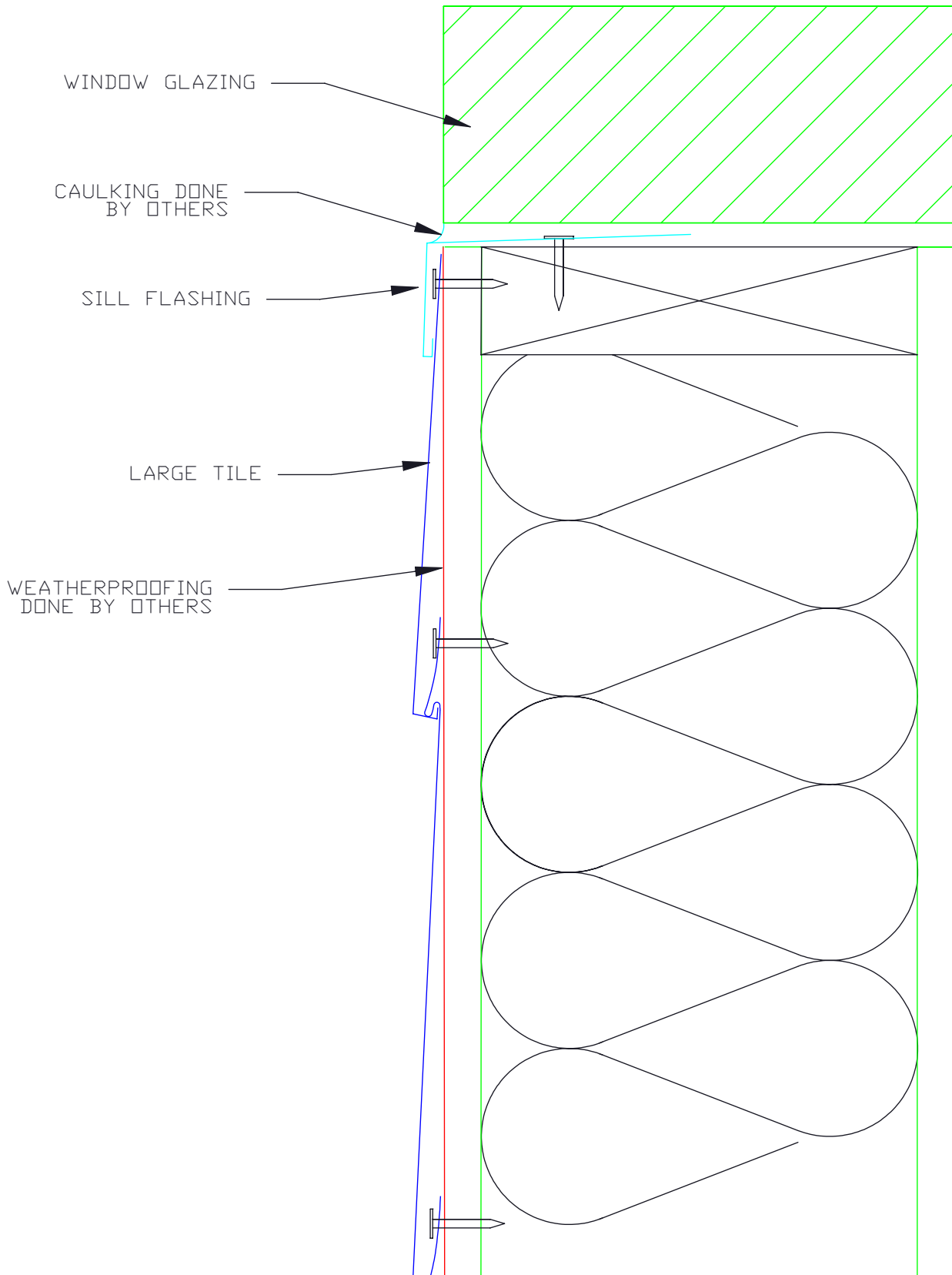
FALSE STARTER

**Starter/False Starter**

4

 <b>MILLENNIUM</b> F O R M S	Material	Sizes	Finish	Colors
	Stainless Steel	8 3/8" x 14 1/2" 0.018" +/- .002	Bright (BA) Mill (2B)	See color selection chart
Zalmag	8 3/8" x 14 1/2" 0.018" +/- .002	Natural Pre-patina II Black	See color selection chart	


Revised 12/10/20



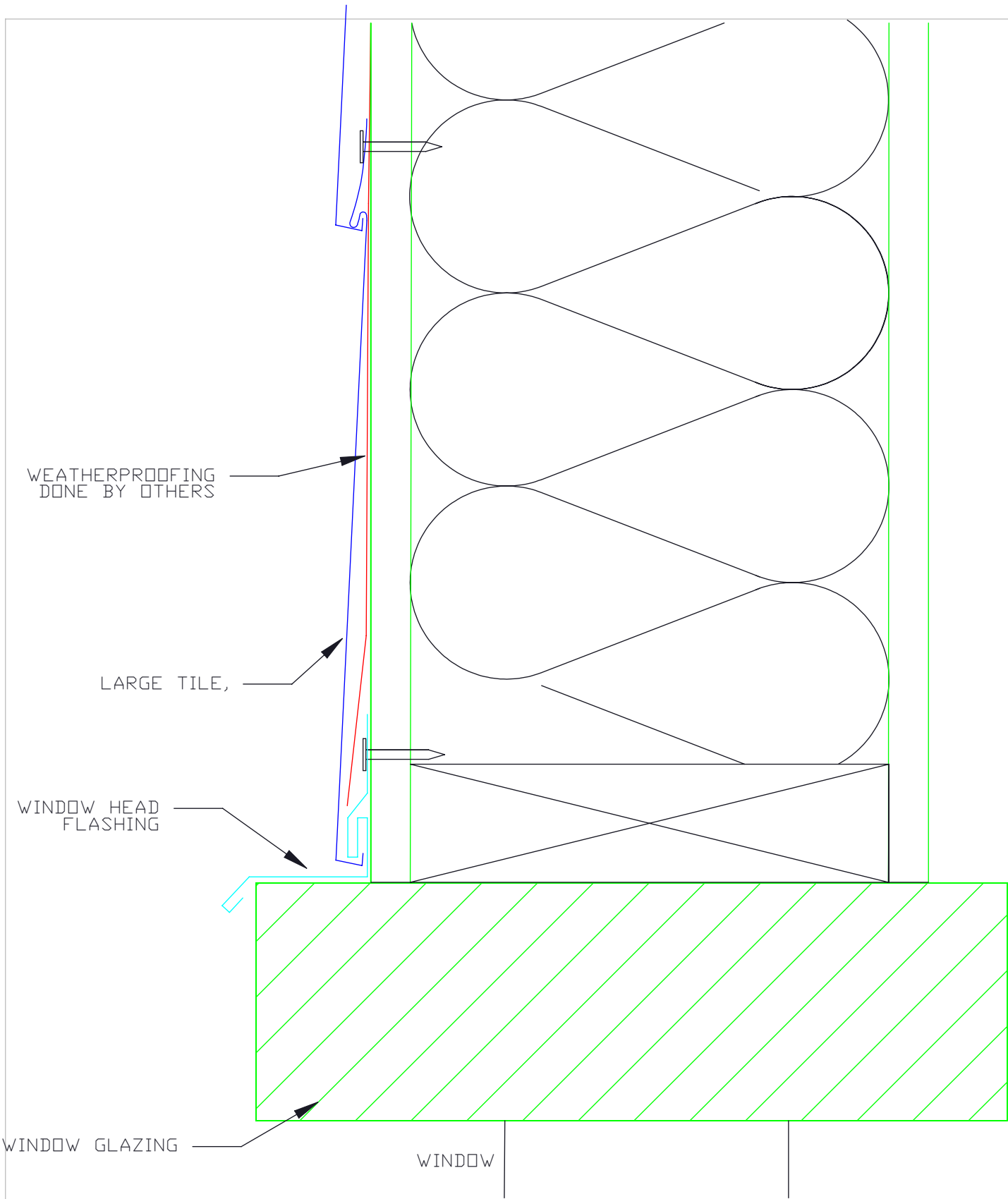
Large Cup Tile

**Window Sill**

5

 <b>MILLENNIUM</b> F O R M S	Material	Sizes	Finish	Colors
	Stainless Steel	8 3/8" x 14 1/2" 0.018" +/- .002	Bright (BA) Mill (2B)	See color selection chart
Zalmag	8 3/8" x 14 1/2" 0.018" +/- .002	Natural Pre-patina II Black	See color selection chart	

Revised 12/10/20

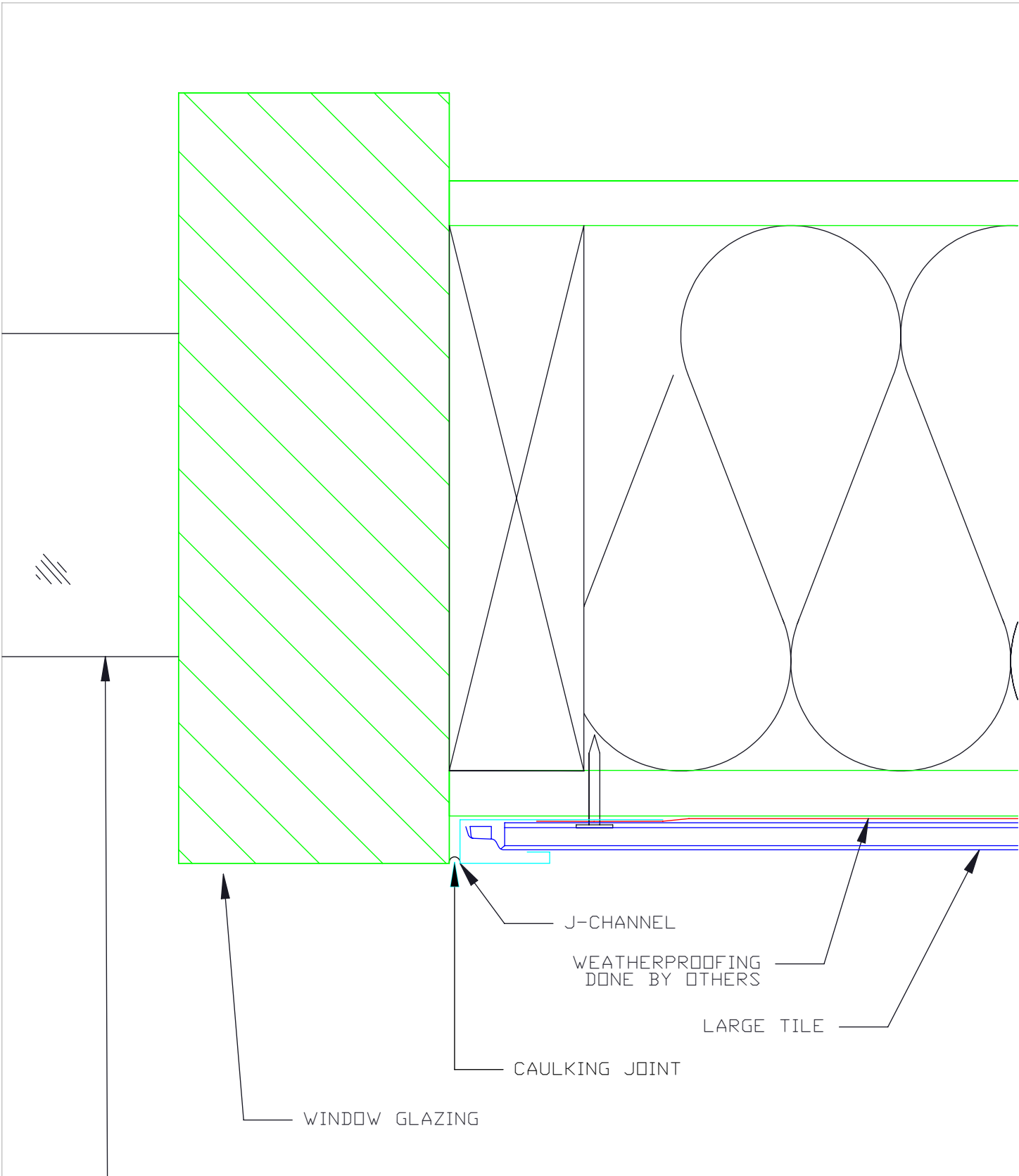


**Window Head**




Material	Sizes	Finish	Colors
Stainless Steel	8 3/8" x 14 1/2" 0.018" +/- .002	Bright (BA) Mill (2B)	See color selection chart
Zalmag	8 3/8" x 14 1/2" 0.018" +/- .002	Natural Pre-patina II Black	See color selection chart

Revised 12/10/20



**Window Jam**

	Material	Sizes	Finish	Colors
	Stainless Steel	8 3/8" x 14 1/2" 0.018" +/- .002	Bright (BA) Mill (2B)	See color selection chart
Zalmag	8 3/8" x 14 1/2" 0.018" +/- .002	Natural Pre-patina II Black	See color selection chart	

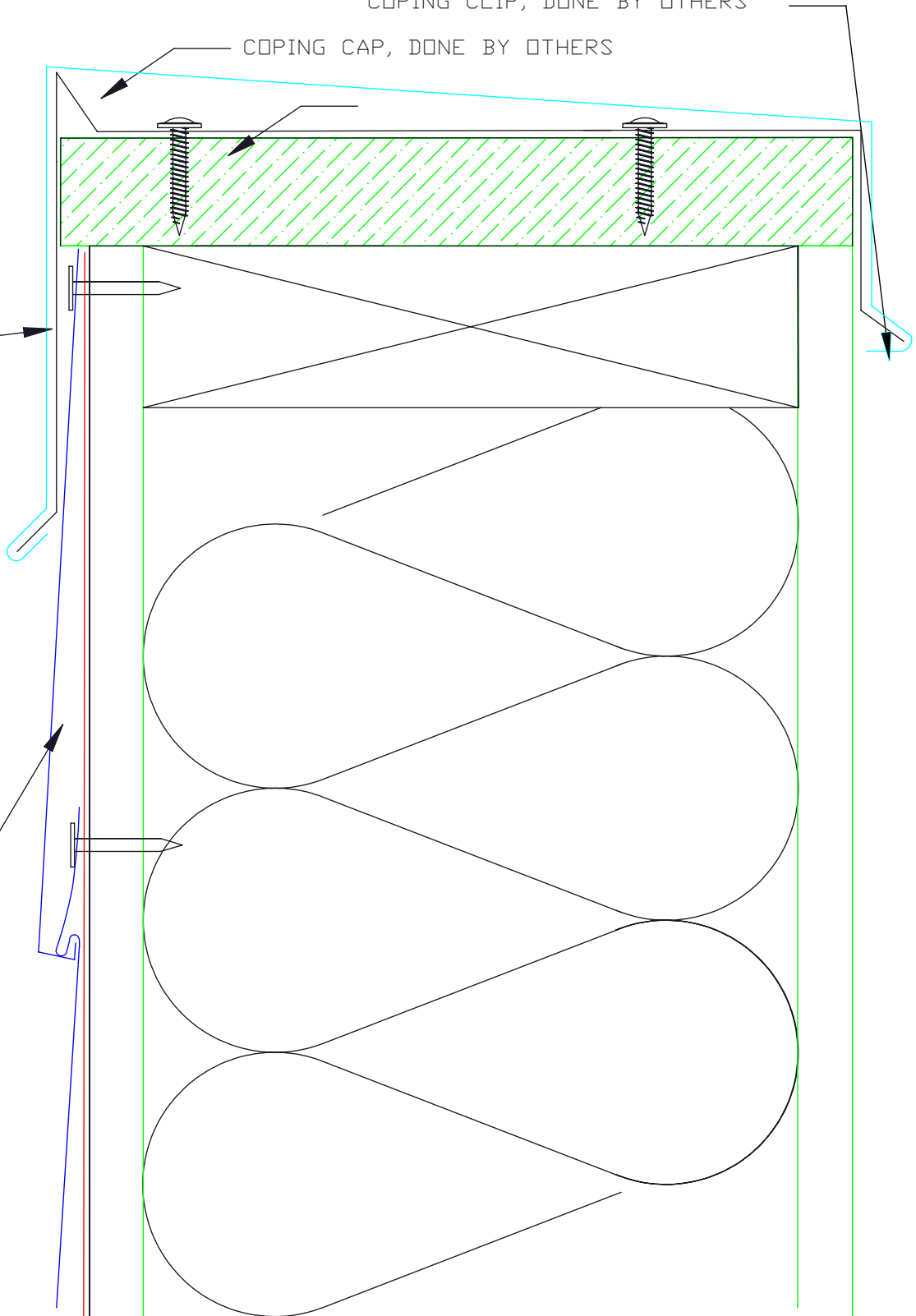
Revised 12/10/20

SPOT CRIMPING AT CLIP PLATES  
 COPING CLIP, DONE BY OTHERS

COPING CAP, DONE BY OTHERS

PANEL TRIMMED AND SHIMMED AS NEEDED


WEATHERPROOFING DONE BY OTHERS



Large Cup Tile

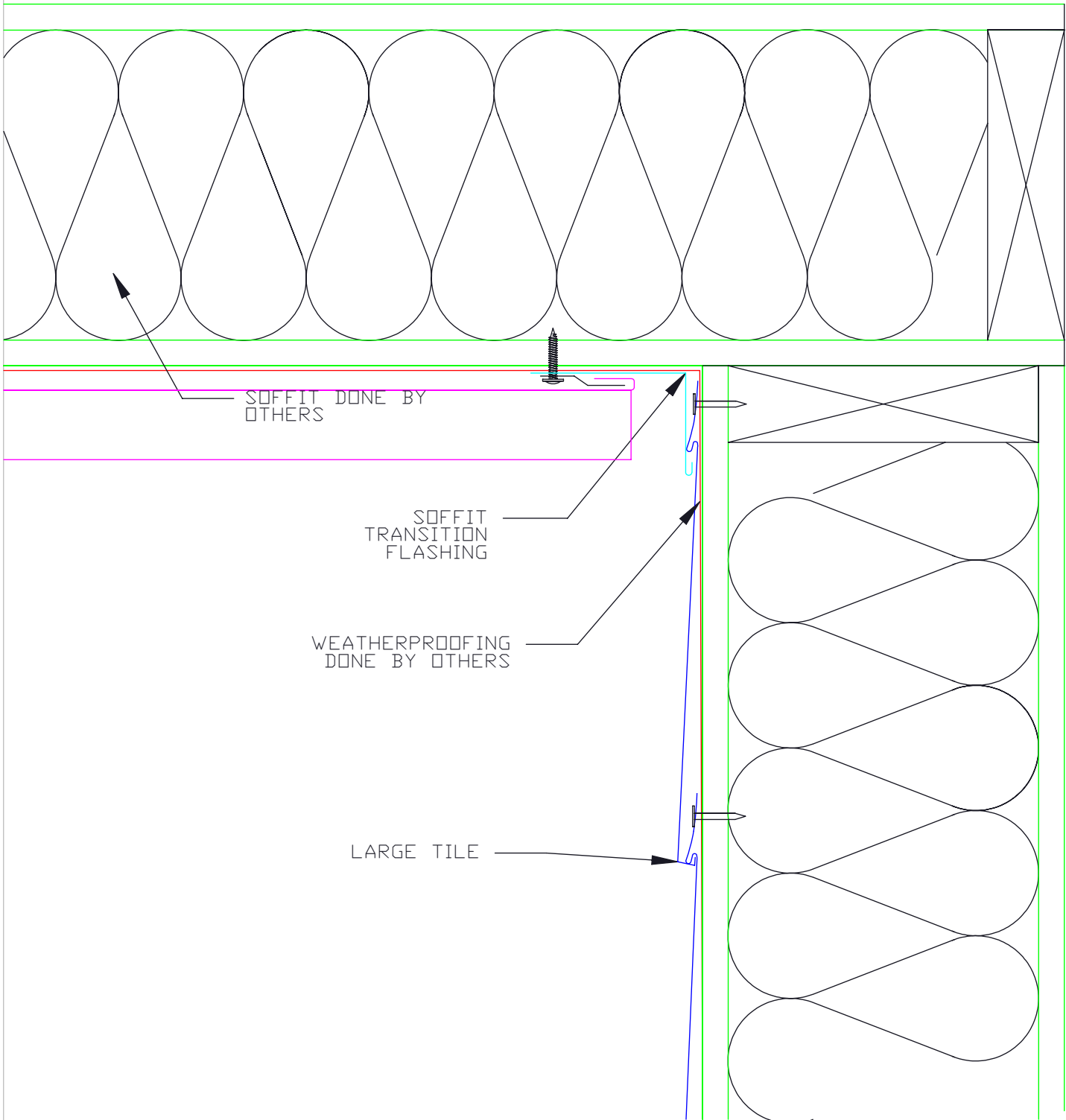
**Coping**

8

 <b>MILLENNIUM</b> F O R M S	Material	Sizes	Finish	Colors
	Stainless Steel	8 3/8" x 14 1/2" 0.018" +/- .002	Bright (BA) Mill (2B)	See color selection chart
Zalmag	8 3/8" x 14 1/2" 0.018" +/- .002	Natural Pre-patina II Black	See color selection chart	


Revised 12/10/20



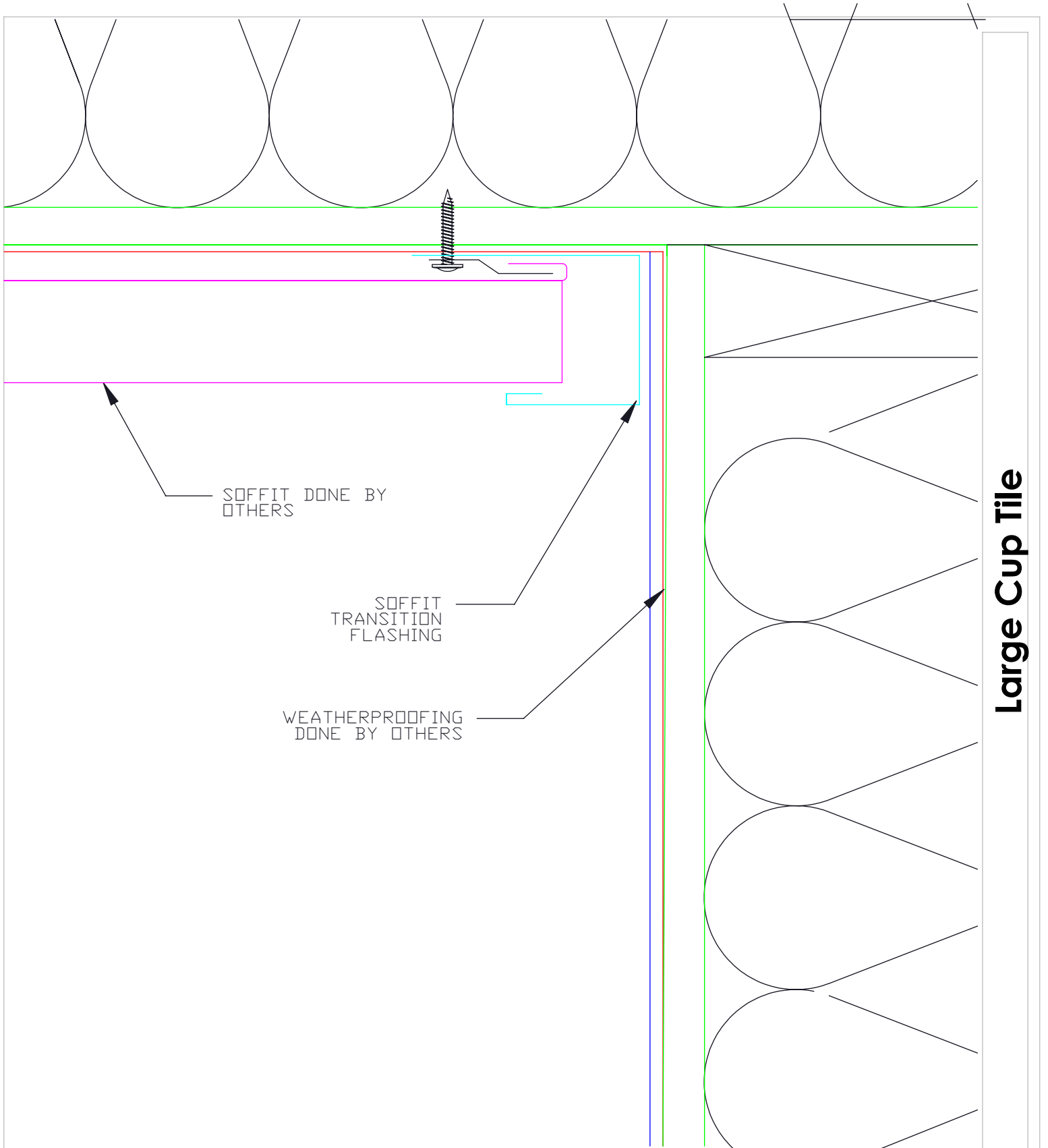


### Termination at Soffit

9


 <b>MILLENNIUM</b> F O R M S	Material	Sizes	Finish	Colors
	Stainless Steel	8 3/8" x 14 1/2" 0.018" +/- .002	Bright (BA) Mill (2B)	See color selection chart
Zalmag	8 3/8" x 14 1/2" 0.018" +/- .002	Natural Pre-patina II Black	See color selection chart	

Revised 12/10/20

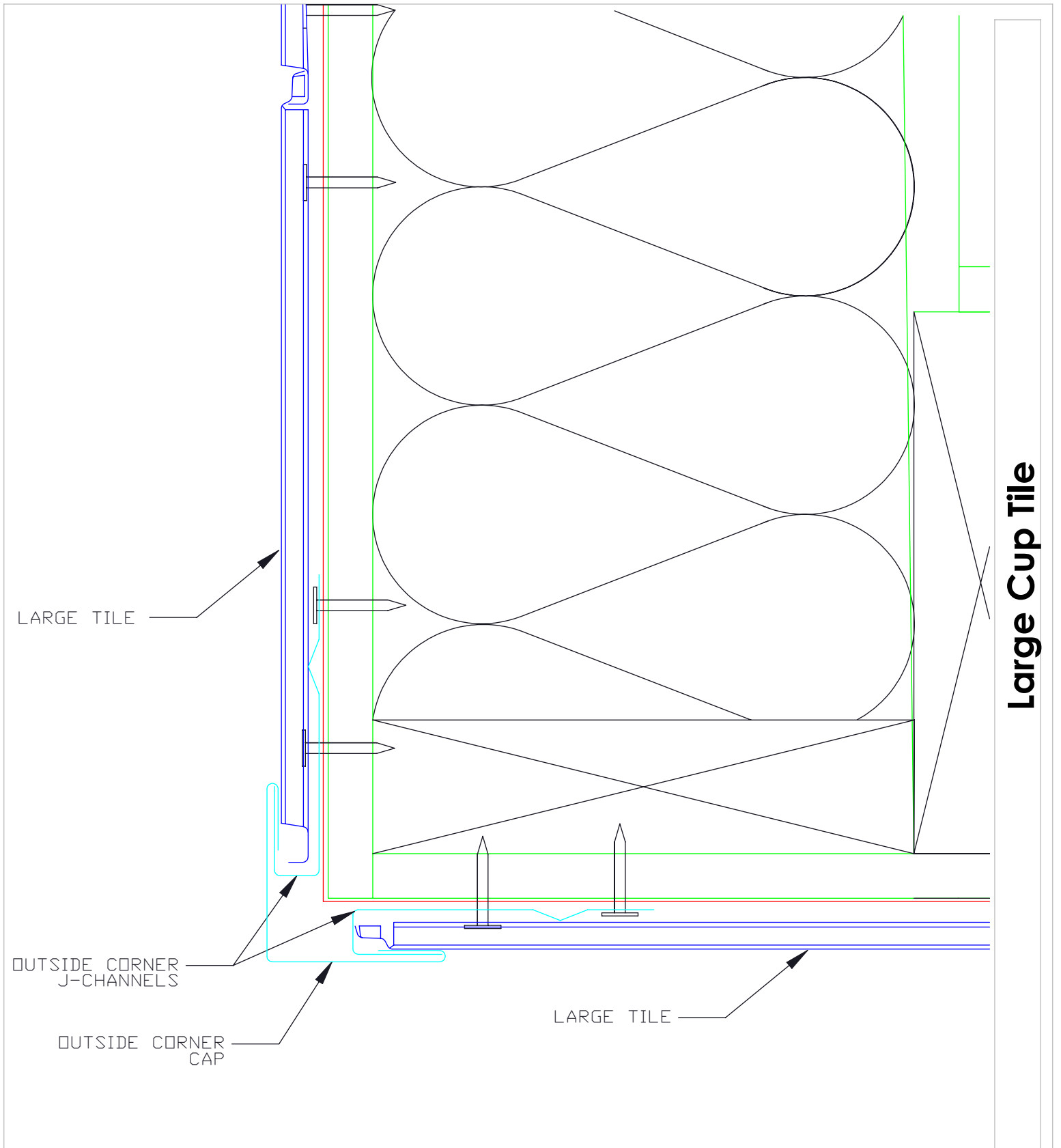


## Termination at Soffit 2

10


 <b>MILLENNIUM</b> F O R M S	<b>Material</b>	<b>Sizes</b>	<b>Finish</b>	<b>Colors</b>
	Stainless Steel	8 3/8" x 14 1/2" 0.018" +/- .002	Bright (BA) Mill (2B)	See color selection chart
Zalmag	8 3/8" x 14 1/2" 0.018" +/- .002	Natural Pre-patina II Black	See color selection chart	

Revised 12/10/20

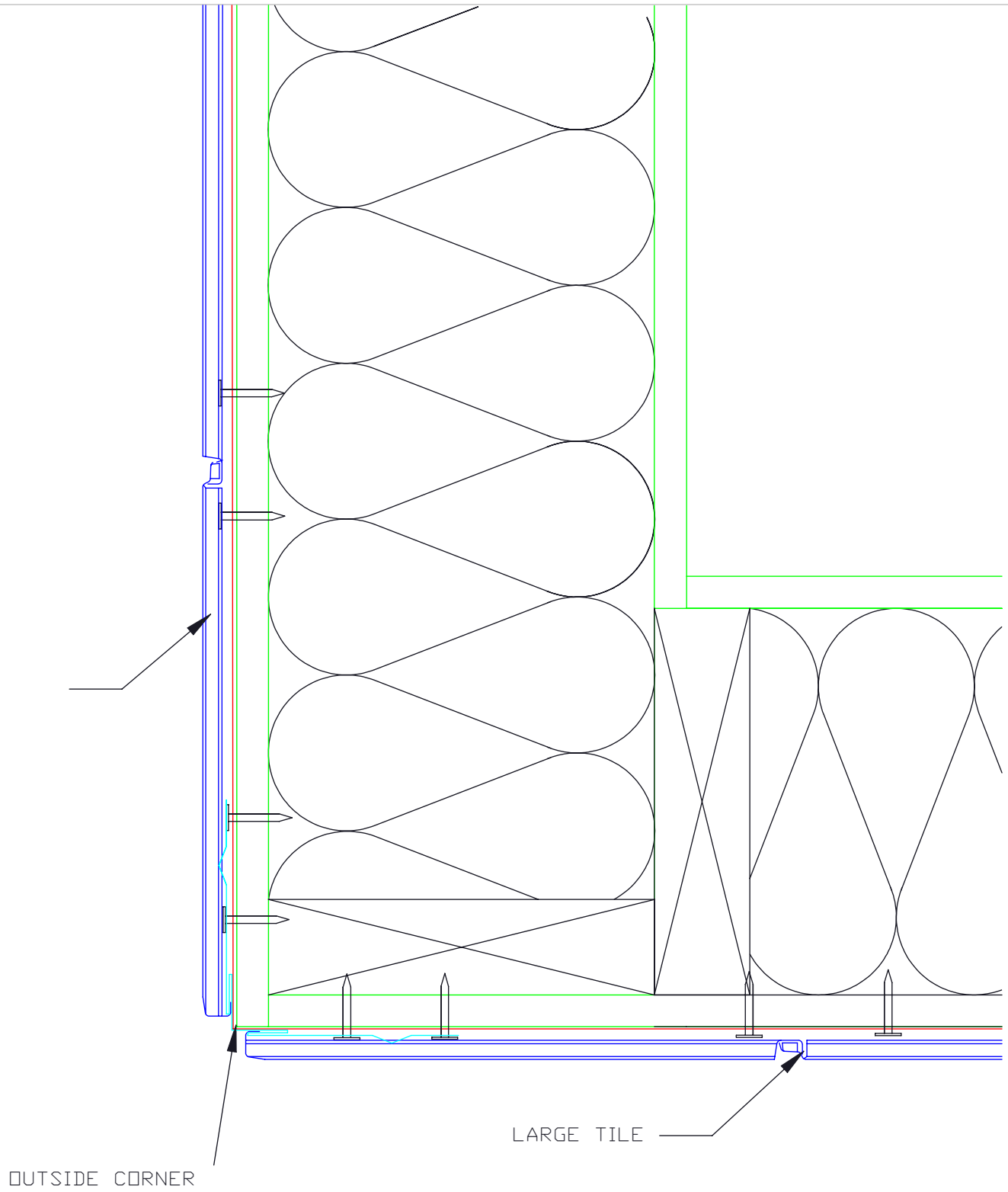


### 3 Piece Outside Corner

11

 <b>MILLENNIUM</b> F O R M S	Material	Sizes	Finish	Colors
	Stainless Steel	8 3/8" x 14 1/2" 0.018" +/- .002	Bright (BA) Mill (2B)	See color selection chart
Zalmag	8 3/8" x 14 1/2" 0.018" +/- .002	Natural Pre-patina II Black	See color selection chart	


Revised 12/10/20



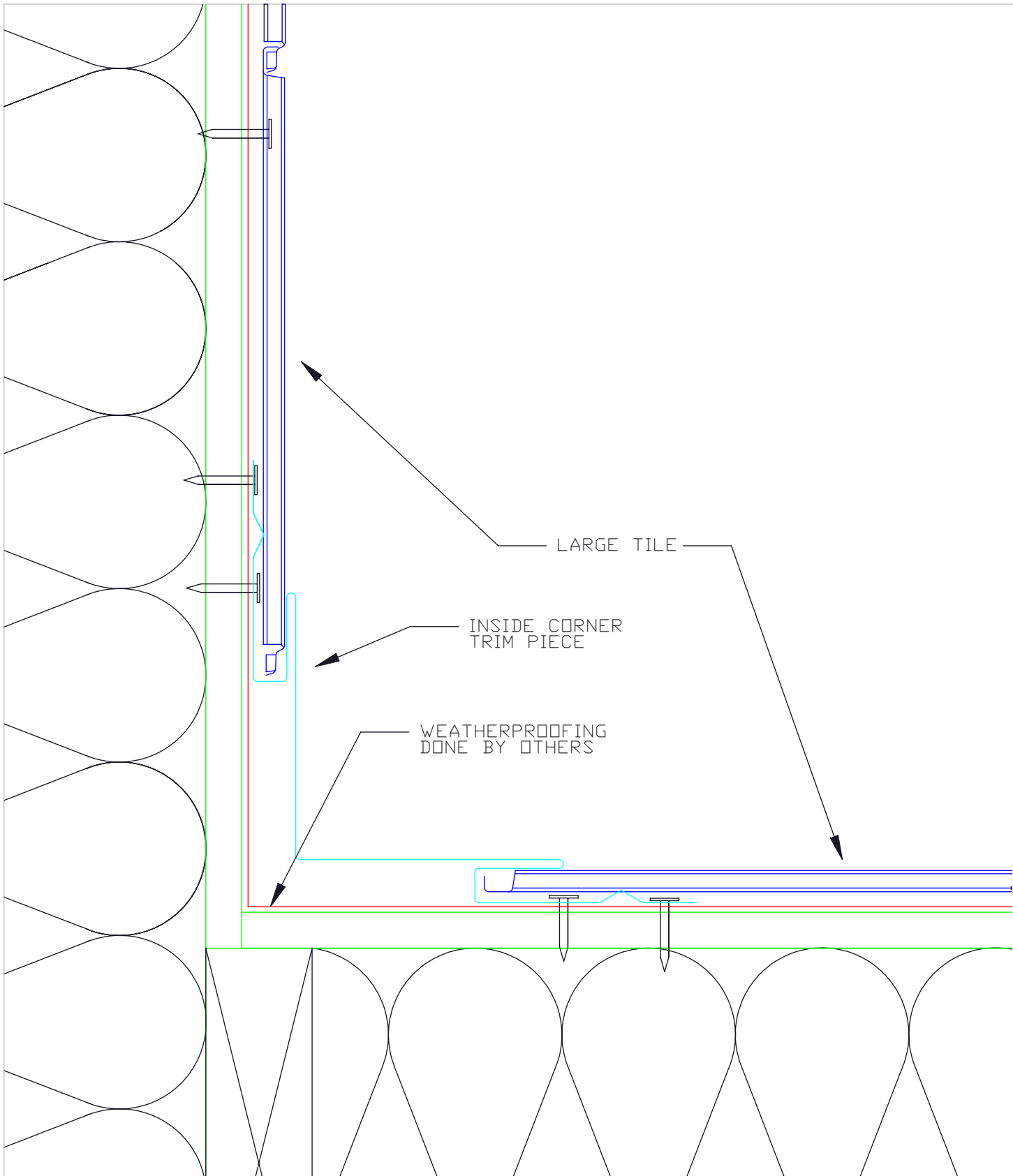
Large Cup Tile

### 1 Piece Outside Corner

12


 <p><b>MILLENNIUM</b> FORMS</p>	Material	Sizes	Finish	Colors
	Stainless Steel	8 3/8" x 14 1/2" 0.018" +/- .002	Bright (BA) Mill (2B)	See color selection chart
Zalmag	8 3/8" x 14 1/2" 0.018" +/- .002	Natural Pre-patina II Black	See color selection chart	

Revised 12/10/20

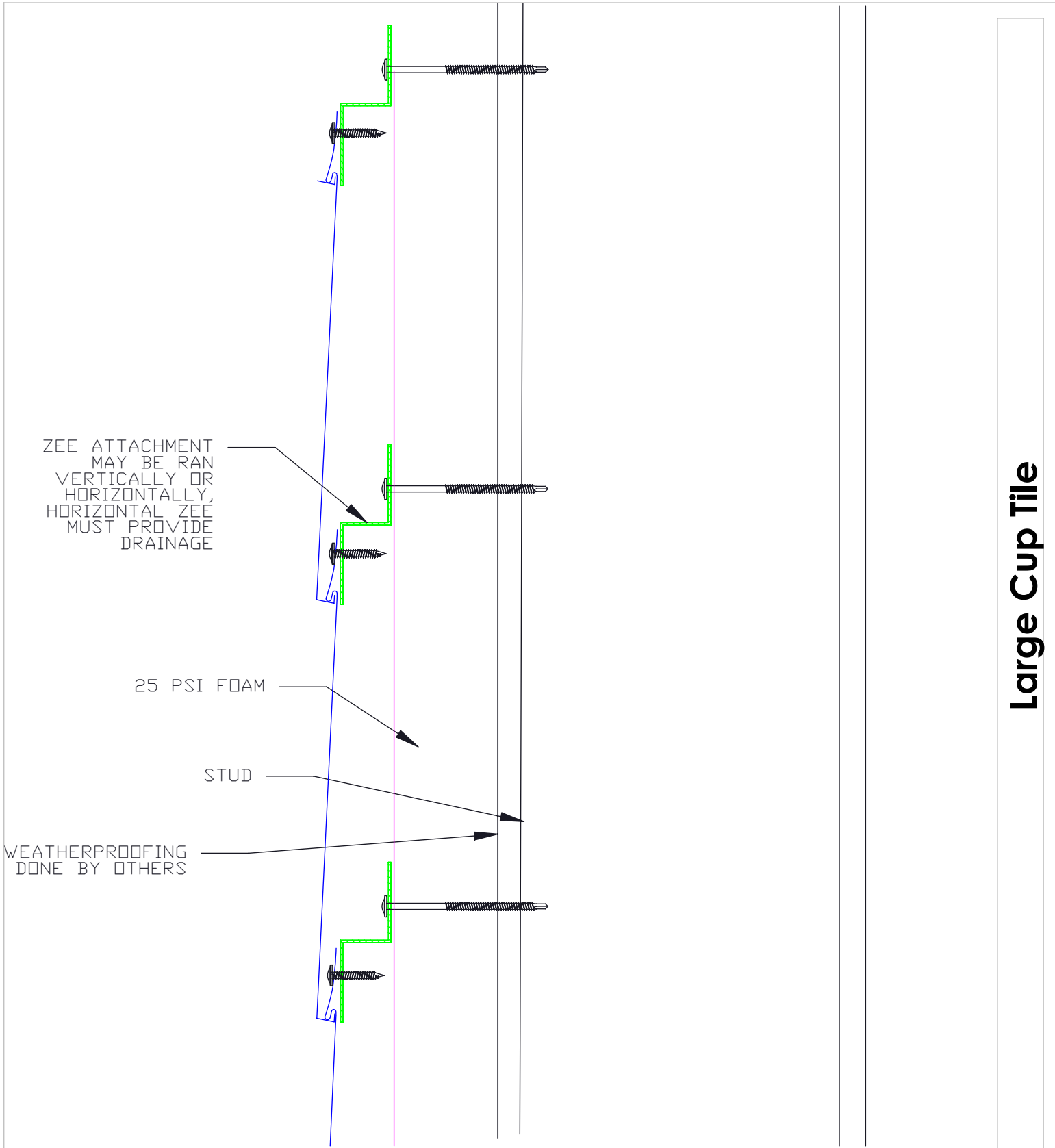


**Inside Corner**

13


 <b>MILLENNIUM</b> F O R M S	Material	Sizes	Finish	Colors
	Stainless Steel	8 3/8" x 14 1/2" 0.018" +/- .002	Bright (BA) Mill (2B)	See color selection chart
Zalmag	8 3/8" x 14 1/2" 0.018" +/- .002	Natural Pre-patina II Black	See color selection chart	

Revised 12/10/20

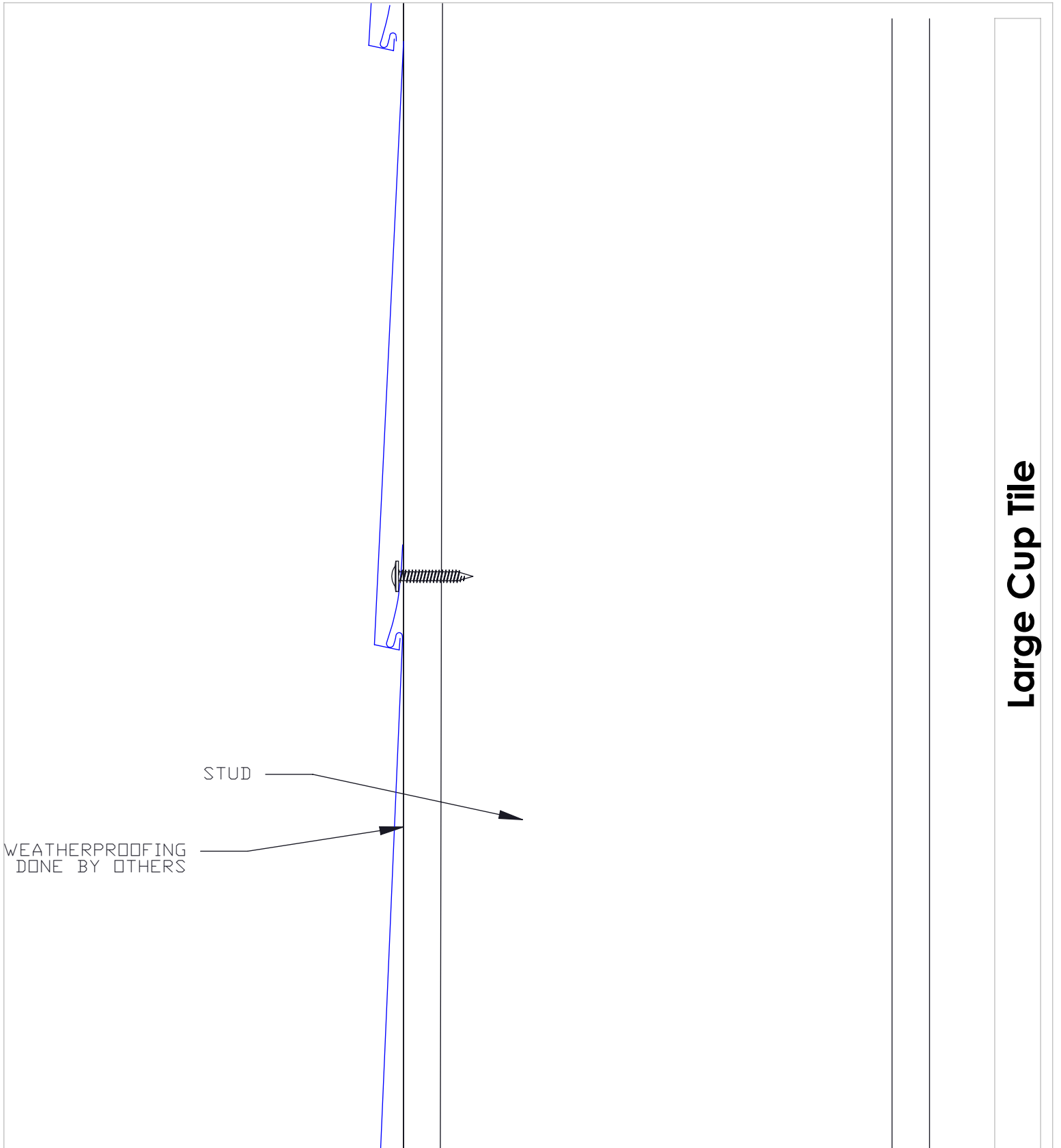


**Exterior Insulation Assembly**

14


 <b>MILLENNIUM</b> F O R M S	Material	Sizes	Finish	Colors
	Stainless Steel	8 3/8" x 14 1/2" 0.018" +/- .002	Bright (BA) Mill (2B)	See color selection chart
Zalmag	8 3/8" x 14 1/2" 0.018" +/- .002	Natural Pre-patina II Black	See color selection chart	

Revised 12/10/20



**Zee over plywood**

15

 <b>MILLENNIUM</b> F O R M S	Material	Sizes	Finish	Colors
	Stainless Steel	8 3/8" x 14 1/2" 0.018" +/- .002	Bright (BA) Mill (2B)	See color selection chart
Zalmag	8 3/8" x 14 1/2" 0.018" +/- .002	Natural Pre-patina II Black	See color selection chart	

Revised 12/10/20