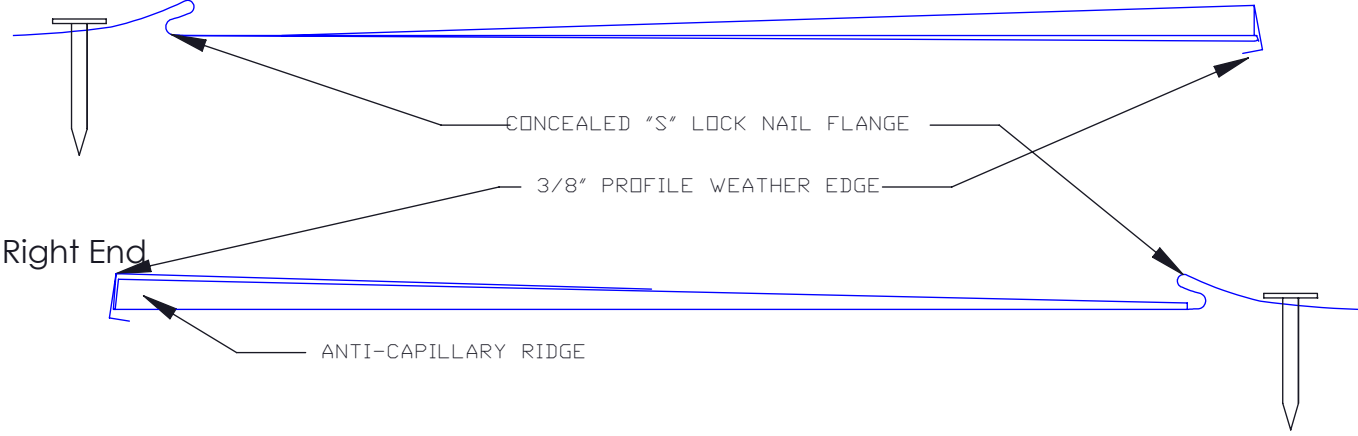
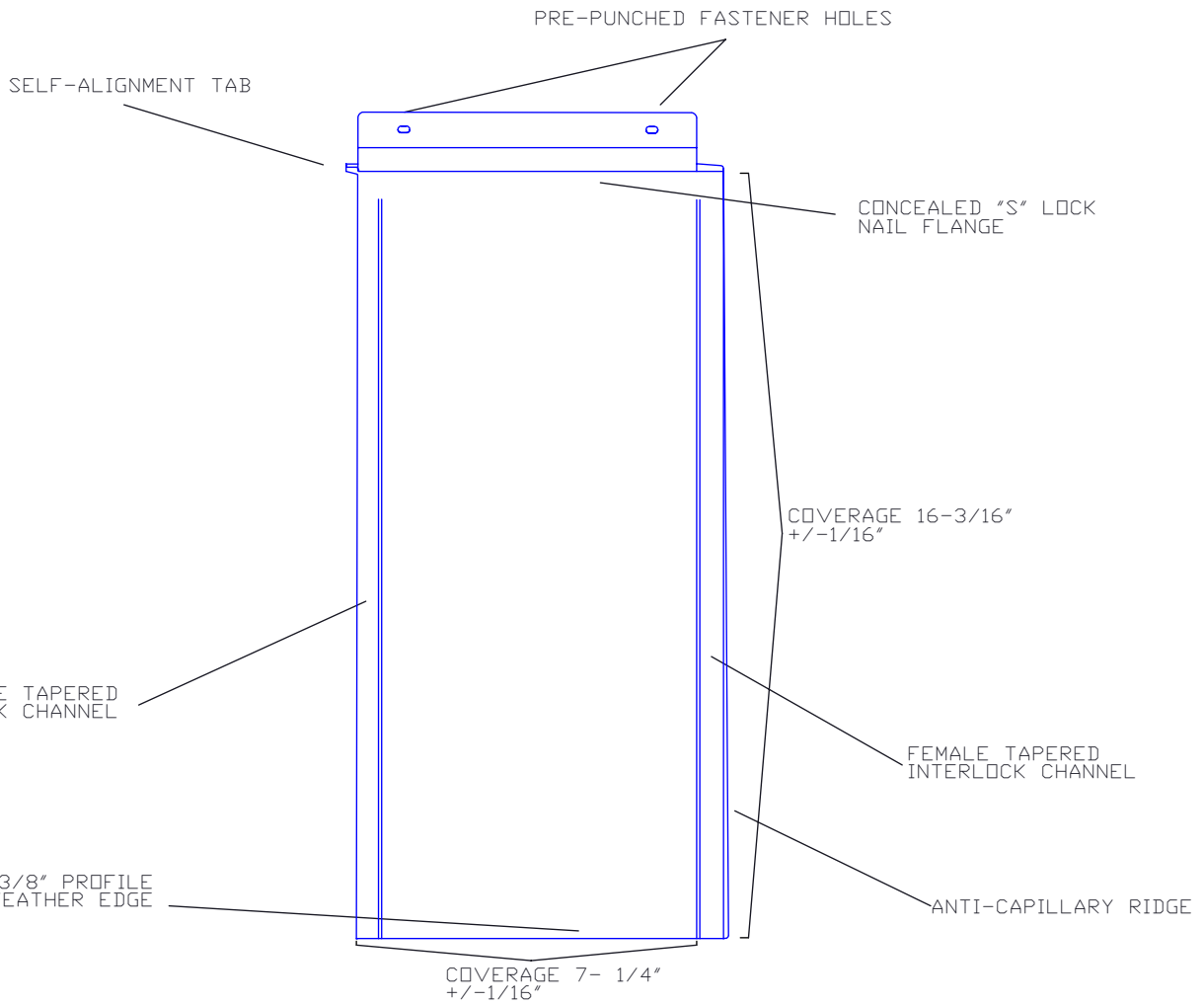


Left End




Right End



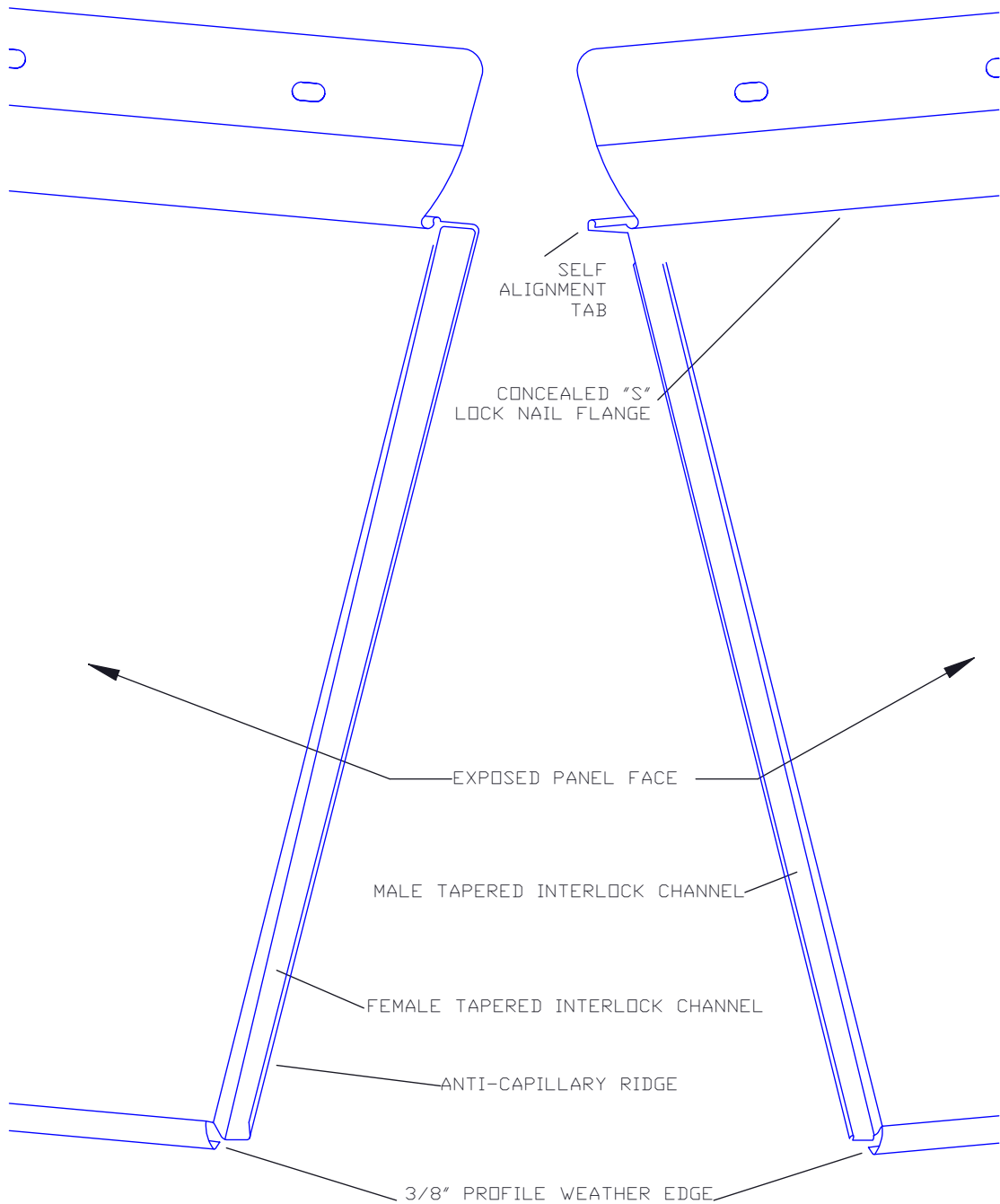
TS Panel

Profile Details

1


 MILLENNIUM F O R M S	Material	Sizes	Finish	Colors
	Stainless Steel	16 3/16" x 7 1/4" 0.018" +/- .002	Bright (BA) Mill (2B)	See color selection chart
Zalmag	16 3/16" x 7 1/4" 0.018" +/- .002	Natural Pre-Patina II	See color selection chart	

Revised 2017

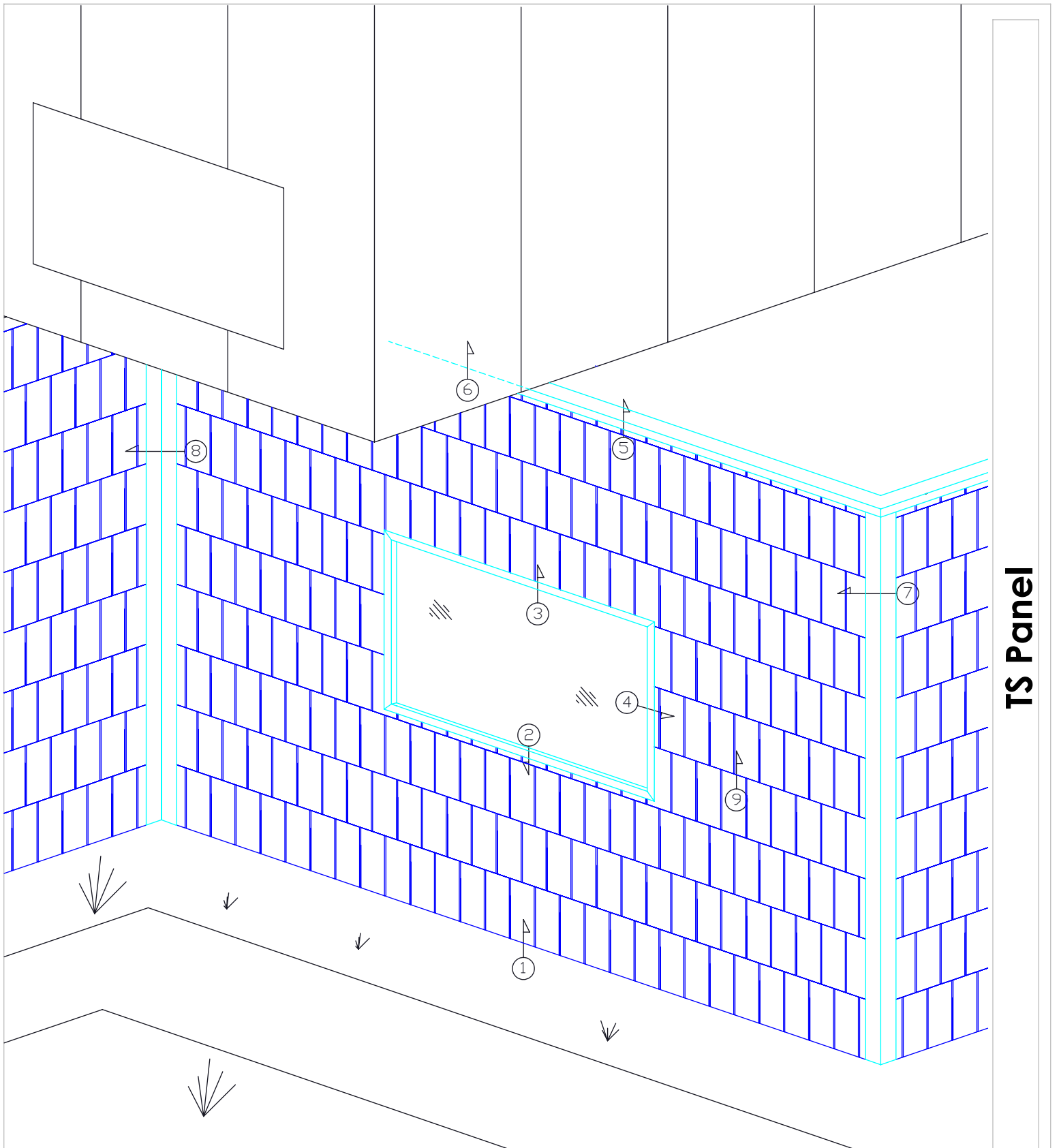


Vertical Joint Detail

2

 MILLENNIUM F O R M S	Material	Sizes	Finish	Colors
	Stainless Steel	16 3/16" x 7 1/4" 0.018" +/- .002	Bright (BA) Mill (2B)	See color selection chart
Zalmag	16 3/16" x 7 1/4" 0.018" +/- .002	Natural Pre-Patina II	See color selection chart	


Revised 2017



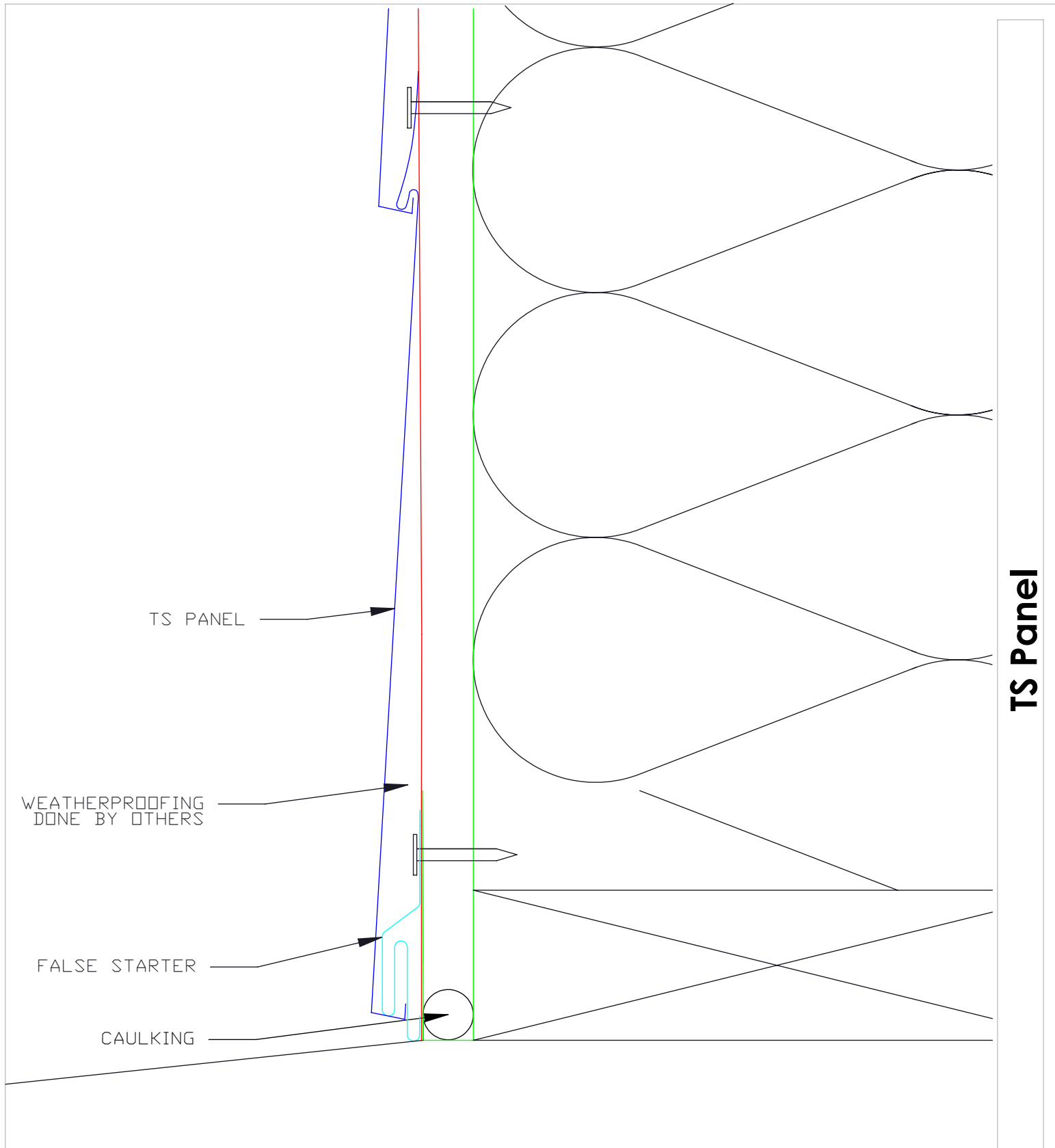
TS Panel

Detail Wall

3


 MILLENNIUM F O R M S	Material	Sizes	Finish	Colors
	Stainless Steel	16 3/16" x 7 1/4" 0.018" +/- .002	Bright (BA) Mill (2B)	See color selection chart
Zalmag	16 3/16" x 7 1/4" 0.018" +/- .002	Natural Pre-Patina II	See color selection chart	

Revised 2017

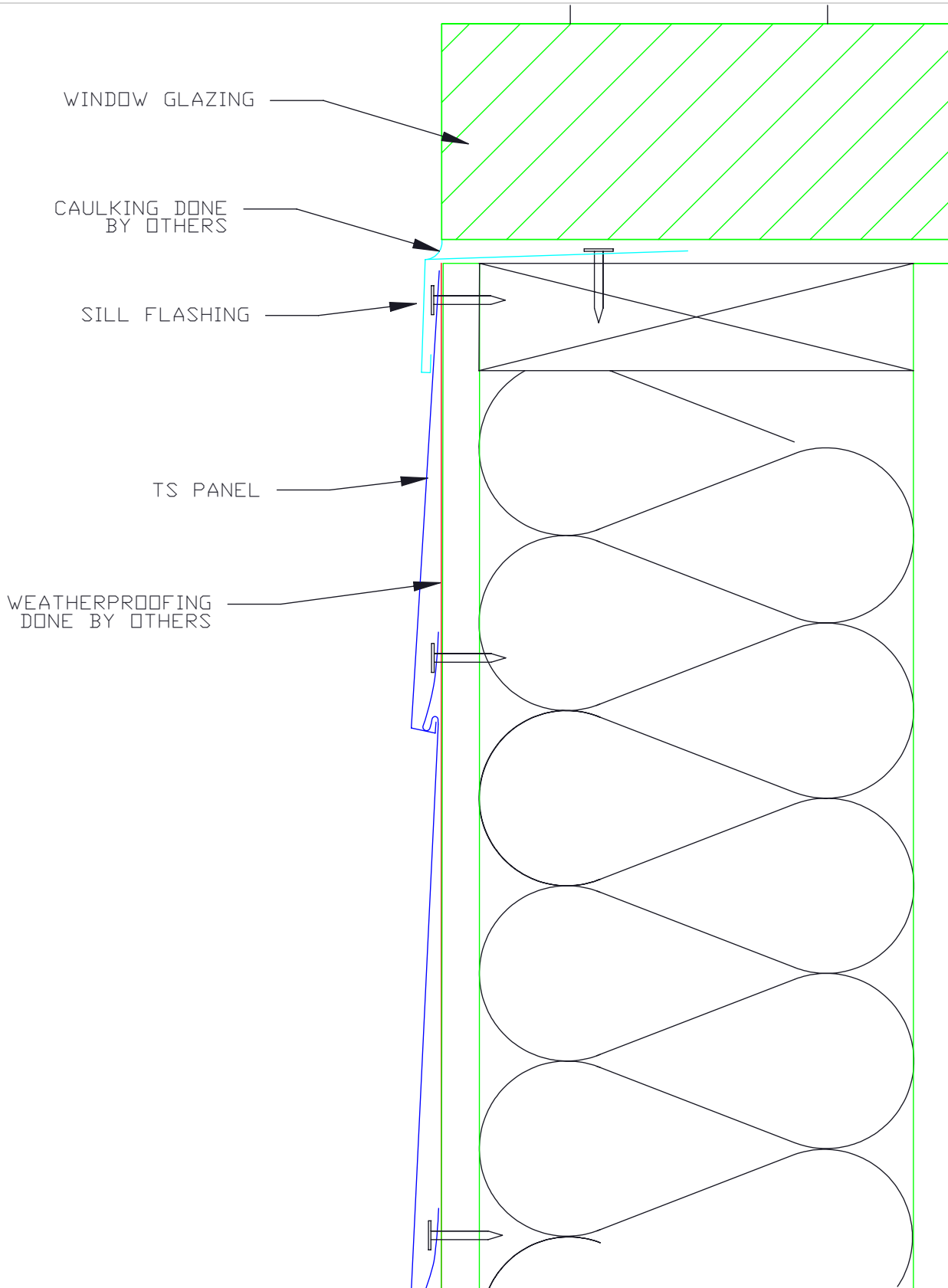


Starter / False Starter

4

 MILLENNIUM F O R M S	Material	Sizes	Finish	Colors
	Stainless Steel	16 3/16" x 7 1/4" 0.018" +/- .002	Bright (BA) Mill (2B)	See color selection chart
	Zalmag	16 3/16" x 7 1/4" 0.018" +/- .002	Natural Pre-Patina II	See color selection chart


Revised 2017



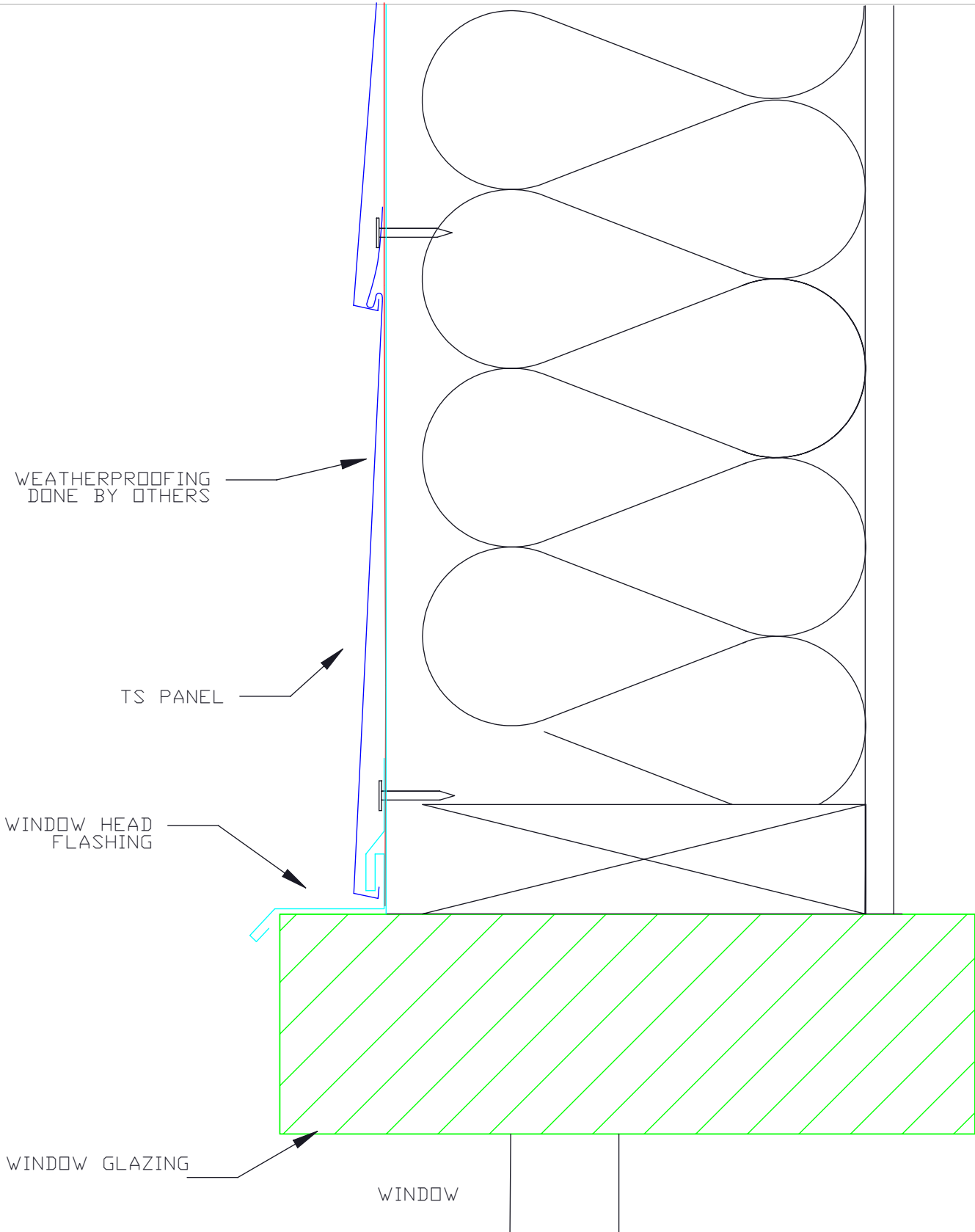
TS Panel

Window Sill

5


 MILLENNIUM F O R M S	Material	Sizes	Finish	Colors
	Stainless Steel	16 3/16" x 7 1/4" 0.018" +/- .002	Bright (BA) Mill (2B)	See color selection chart
Zalmag	16 3/16" x 7 1/4" 0.018" +/- .002	Natural Pre-Patina II	See color selection chart	

Revised 2017

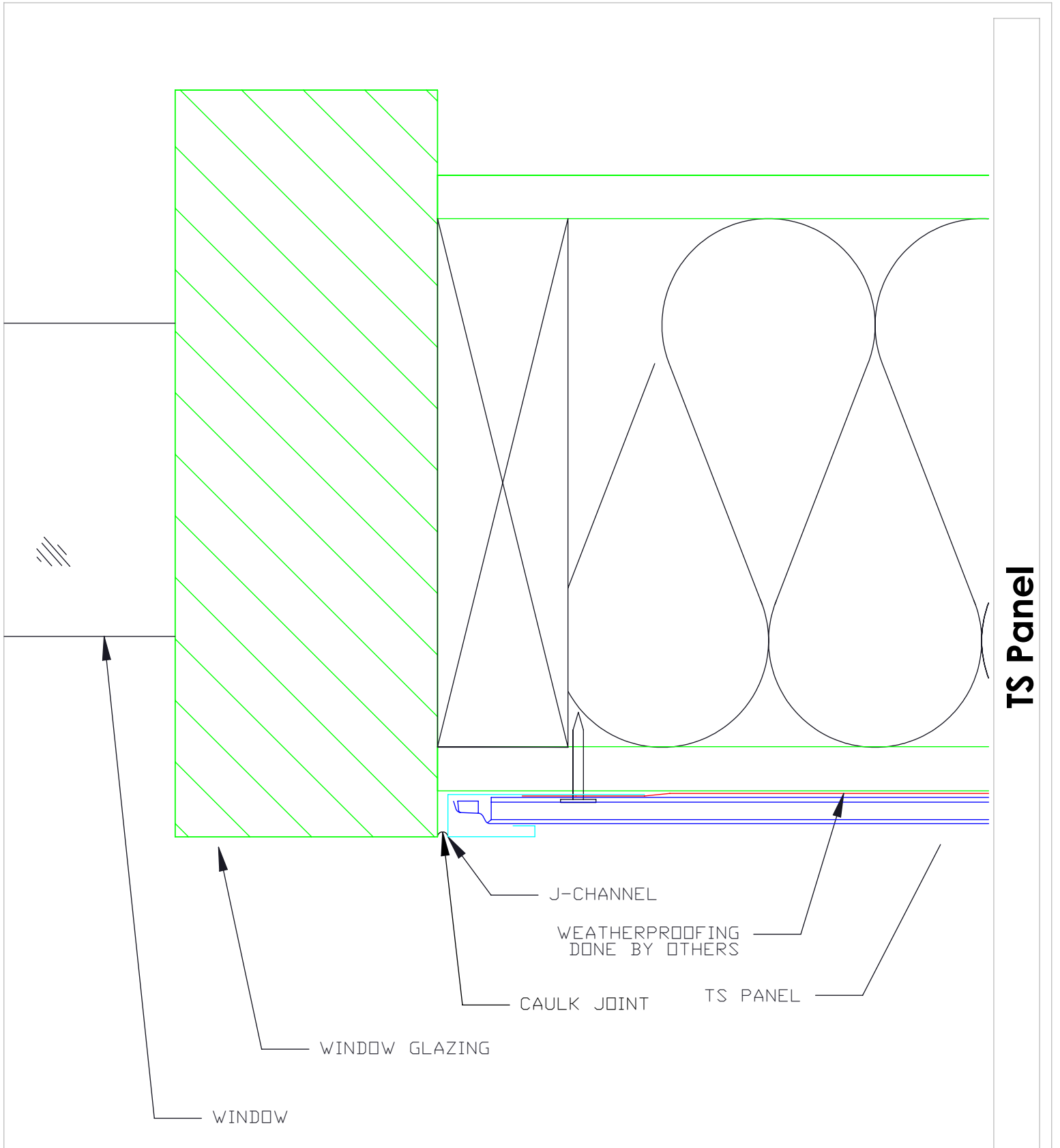


Window Head

6


 MILLENNIUM F O R M S	Material	Sizes	Finish	Colors
	Stainless Steel	16 3/16" x 7 1/4" 0.018" +/- .002	Bright (BA) Mill (2B)	See color selection chart
Zalmag	16 3/16" x 7 1/4" 0.018" +/- .002	Natural Pre-Patina II	See color selection chart	

Revised 2017

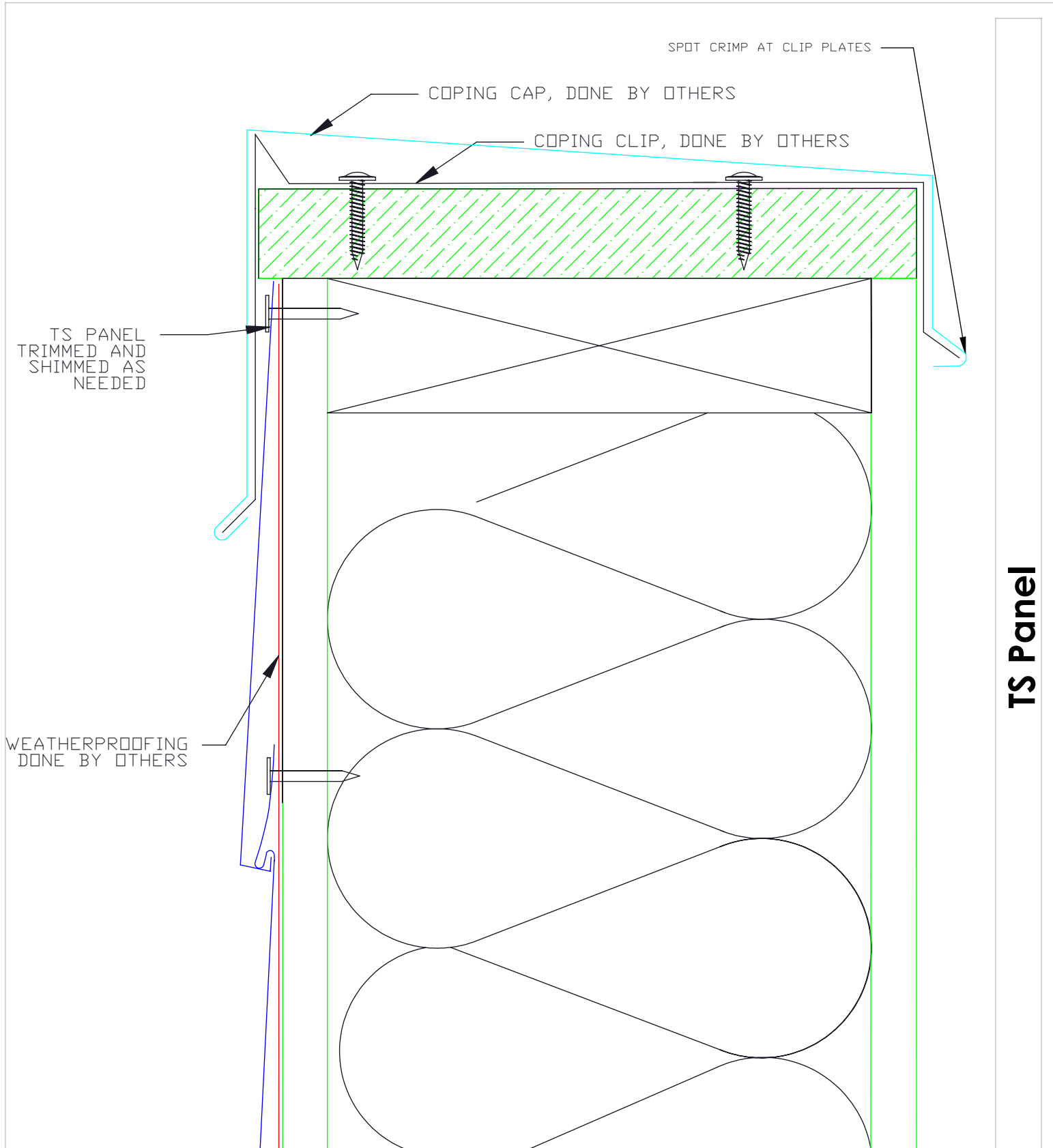


Window Jam

7

 MILLENNIUM F O R M S	Material	Sizes	Finish	Colors
	Stainless Steel	16 3/16" x 7 1/4" 0.018" +/- .002	Bright (BA) Mill (2B)	See color selection chart
Zalmag	16 3/16" x 7 1/4" 0.018" +/- .002	Natural Pre-Patina II	See color selection chart	


Revised 2017



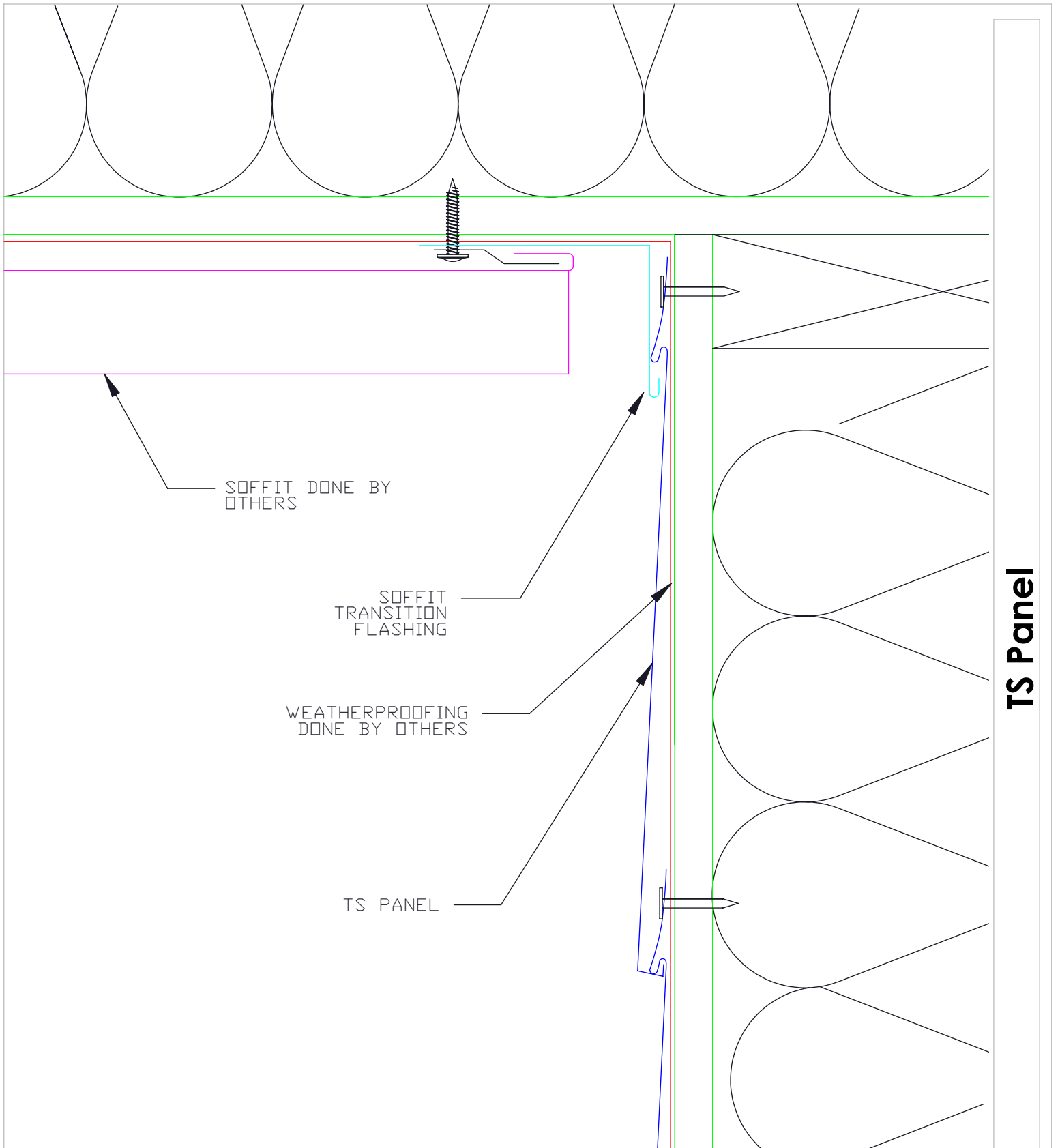
TS Panel

Copping

8


 MILLENNIUM F O R M S	Material	Sizes	Finish	Colors
	Stainless Steel	16 3/16" x 7 1/4" 0.018" +/- .002	Bright (BA) Mill (2B)	See color selection chart
Zalmag	16 3/16" x 7 1/4" 0.018" +/- .002	Natural Pre-Patina II	See color selection chart	

Revised 2017

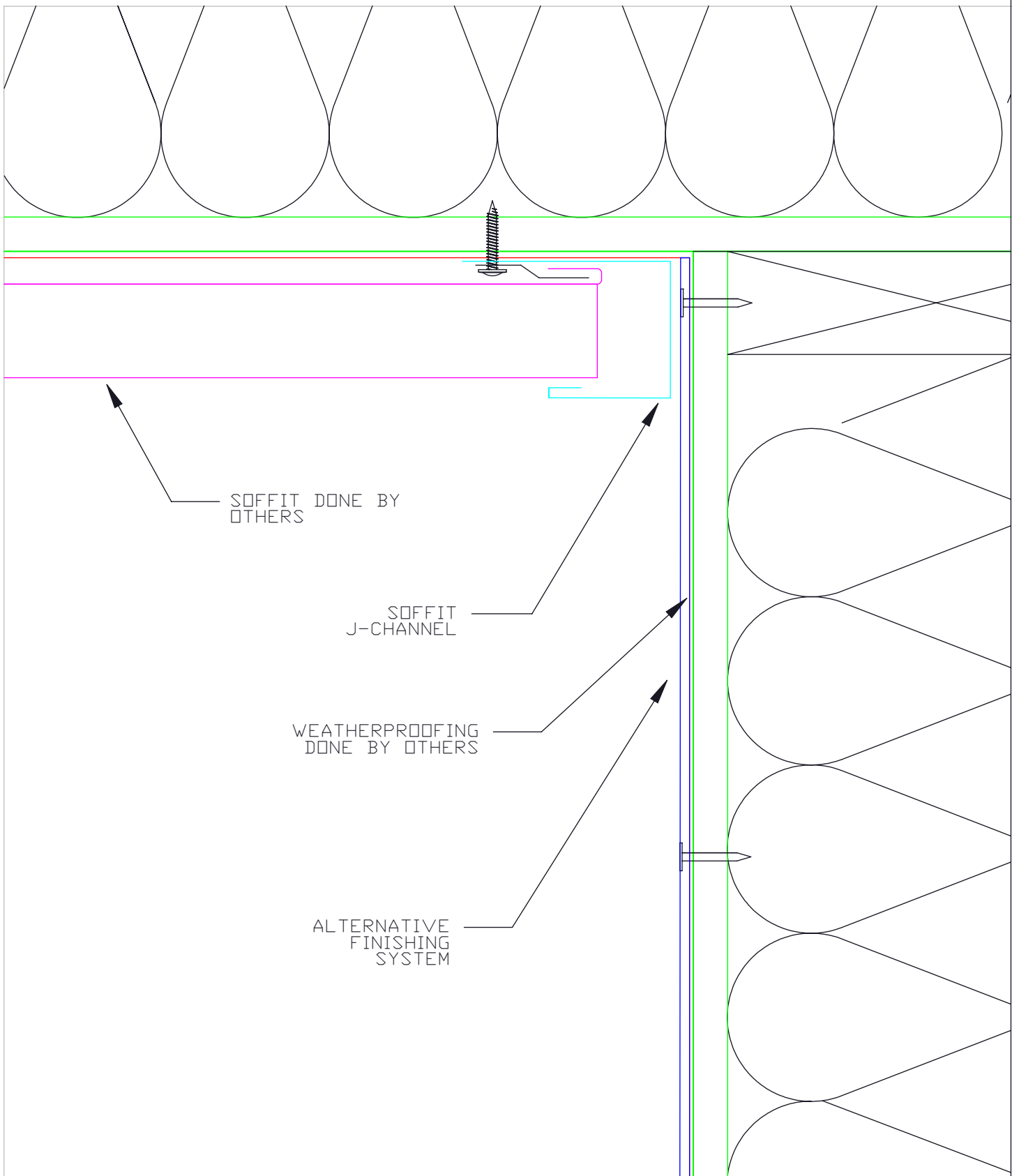


Soffit Termination

9

 MILLENNIUM F O R M S	Material	Sizes	Finish	Colors
	Stainless Steel	16 3/16" x 7 1/4" 0.018" +/- .002	Bright (BA) Mill (2B)	See color selection chart
Zalmag	16 3/16" x 7 1/4" 0.018" +/- .002	Natural Pre-Patina II	See color selection chart	


Revised 2017



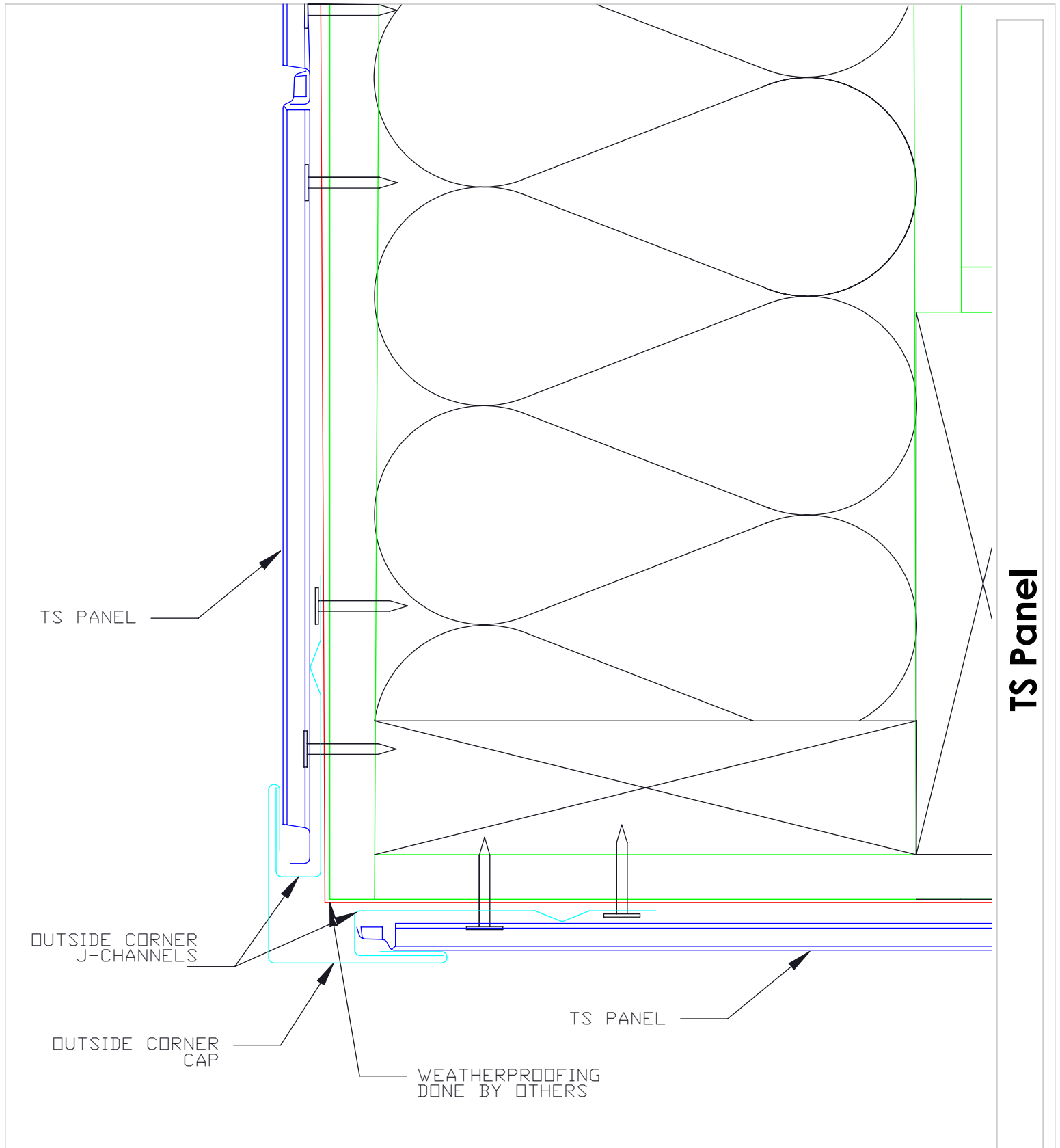
TS Panel

Soffit Termination II

10

 MILLENNIUM F O R M S	Material	Sizes	Finish	Colors
	Stainless Steel	16 3/16" x 7 1/4" 0.018" +/- .002	Bright (BA) Mill (2B)	See color selection chart
Zalmag	16 3/16" x 7 1/4" 0.018" +/- .002	Natural Pre-Patina II	See color selection chart	


Revised 2017



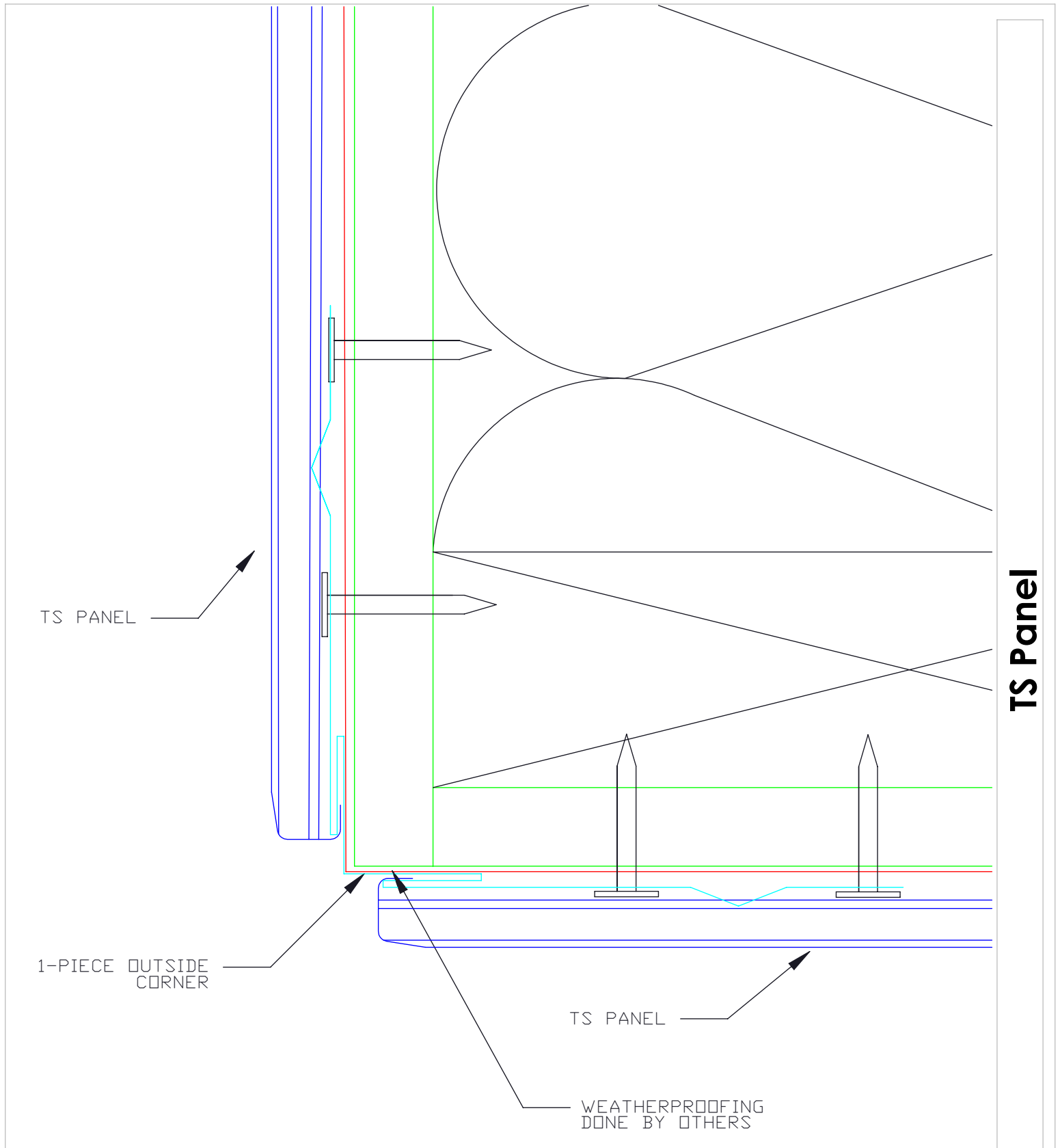
TS Panel

3-Piece Outside Corner

11


 MILLENNIUM F O R M S	Material	Sizes	Finish	Colors
	Stainless Steel	16 3/16" x 7 1/4" 0.018" +/- .002	Bright (BA) Mill (2B)	See color selection chart
Zalmag	16 3/16" x 7 1/4" 0.018" +/- .002	Natural Pre-Patina II	See color selection chart	

Revised 2017

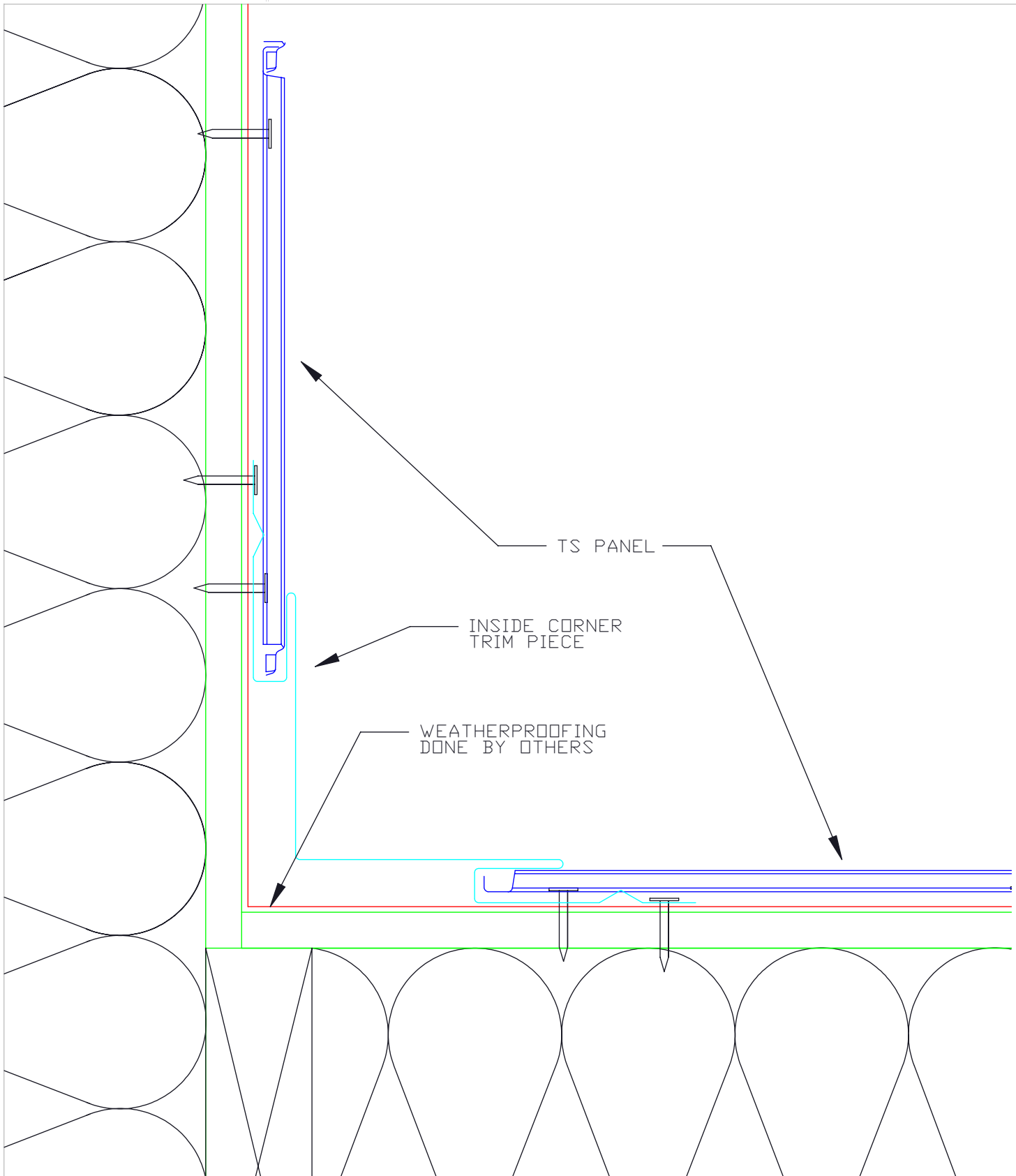


1-Piece Outside Corner

12

 MILLENNIUM F O R M S	Material	Sizes	Finish	Colors
	Stainless Steel	16 3/16" x 7 1/4" 0.018" +/- .002	Bright (BA) Mill (2B)	See color selection chart
Zalmag	16 3/16" x 7 1/4" 0.018" +/- .002	Natural Pre-Patina II	See color selection chart	


Revised 2017



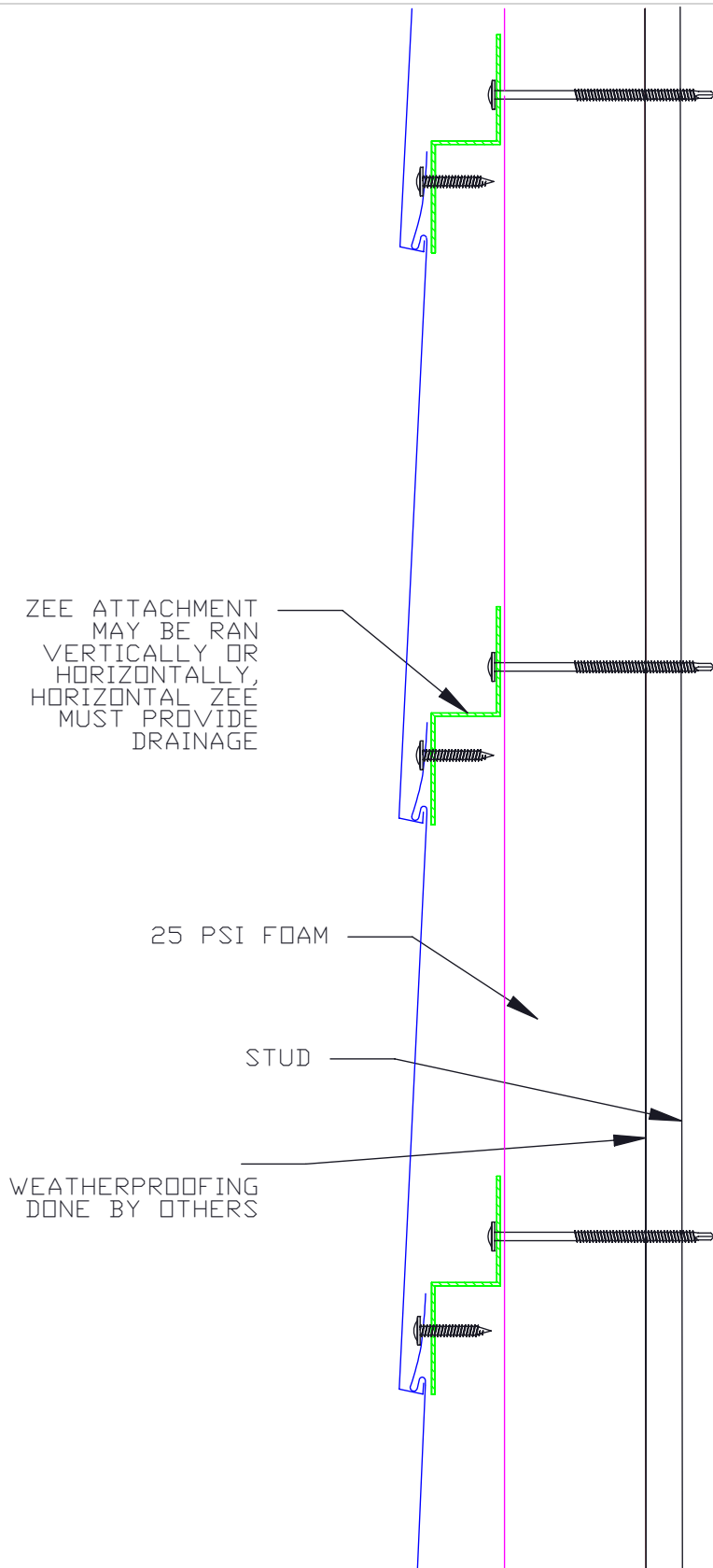
TS Panel

Inside Corner

13


 MILLENNIUM F O R M S	Material	Sizes	Finish	Colors
	Stainless Steel	16 3/16" x 7 1/4" 0.018" +/- .002	Bright (BA) Mill (2B)	See color selection chart
Zalmag	16 3/16" x 7 1/4" 0.018" +/- .002	Natural Pre-Patina II	See color selection chart	

Revised 2017



Install Exterior Installation

14

 MILLENNIUM F O R M S	Material	Sizes	Finish	Colors
	Stainless Steel	16 3/16" x 7 1/4" 0.018" +/- .002	Bright (BA) Mill (2B)	See color selection chart
	Zalmag	16 3/16" x 7 1/4" 0.018" +/- .002	Natural Pre-Patina II	See color selection chart

Revised 2017