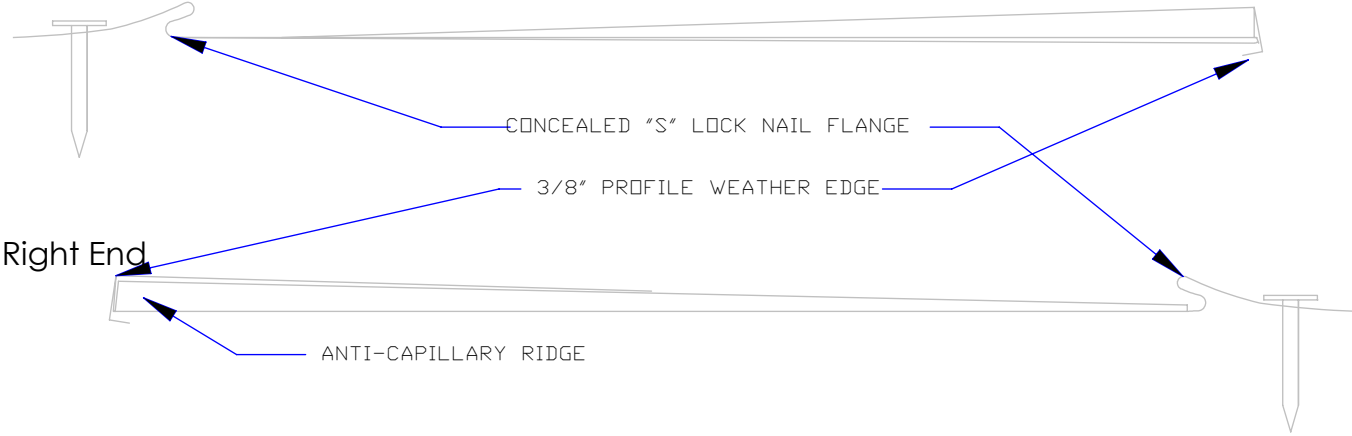
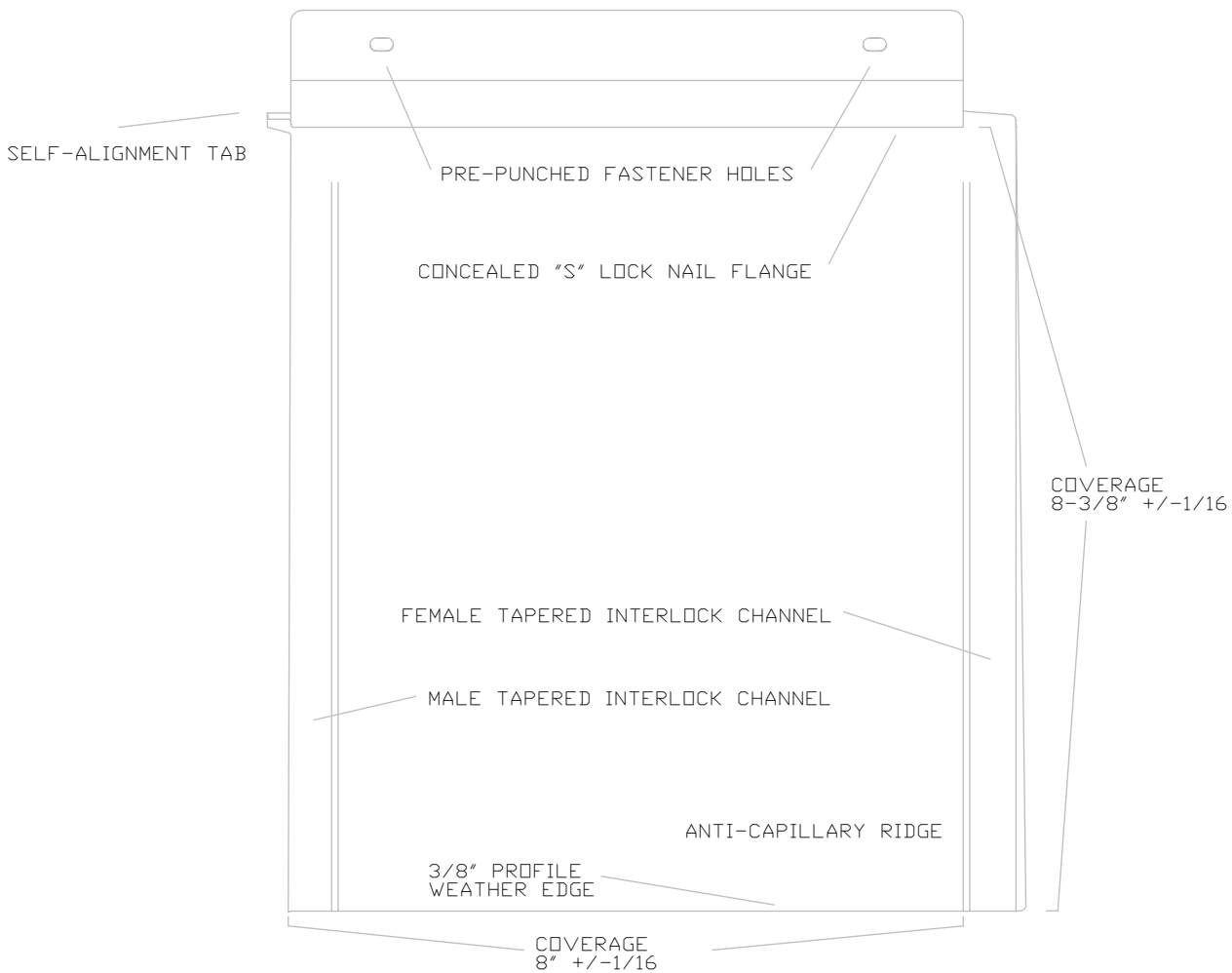


Left End




Right End



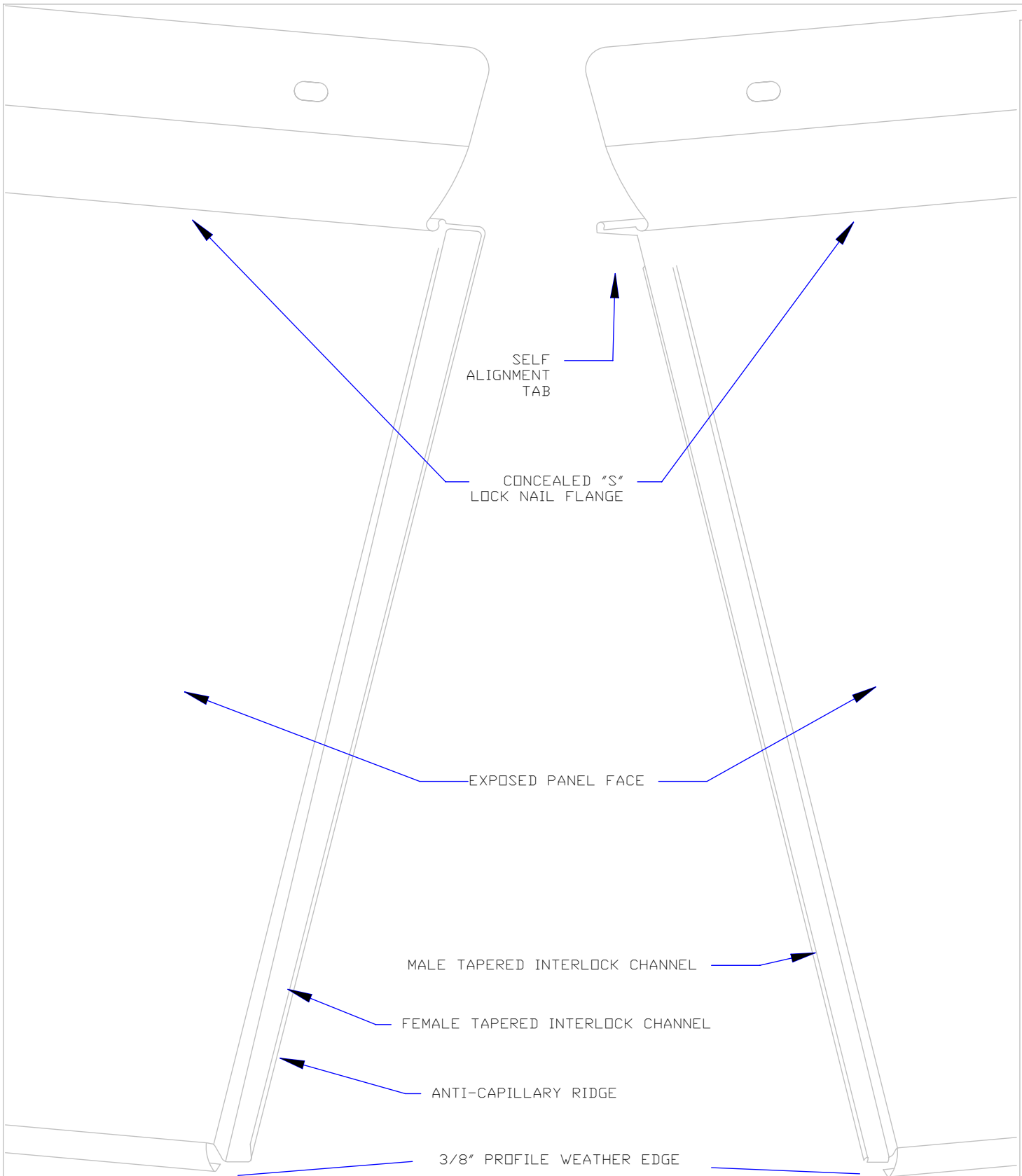
Diamond Tile

Profile Details

1

 MILLENNIUM FORMS	Material	Sizes	Finish	Colors
	Stainless Steel	8" x 8-3/8" +/- 1/16" 0.018" +/- .002	Bright (BA) Mill (2B)	See color selection chart
	Zalmag	8" x 8-3/8" +/- 1/16" 0.018" +/- .002	Natural Pre-Patina II Black	See color selection chart

Revised 2017



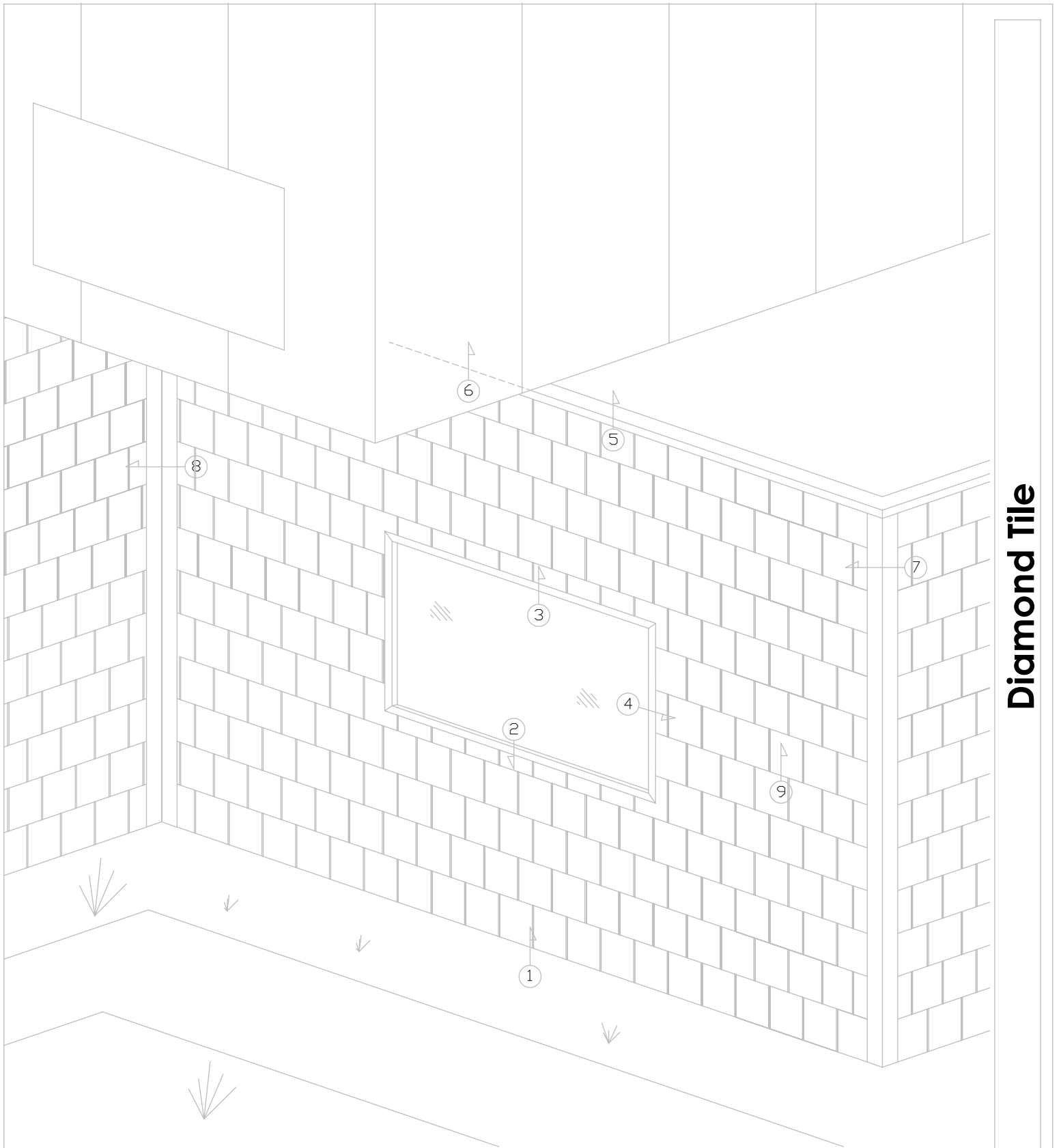
Vertical Joint Detail

2



Material	Sizes	Finish	Colors
Stainless Steel	8" x 8-3/8" +/-1/16" 0.018" +/- .002	Bright (BA) Mill (2B)	See color selection chart
Zalmag	8" x 8-3/8" +/-1/16" 0.018" +/- .002	Natural Pre-Patina II Black	See color selection chart


Revised 2017



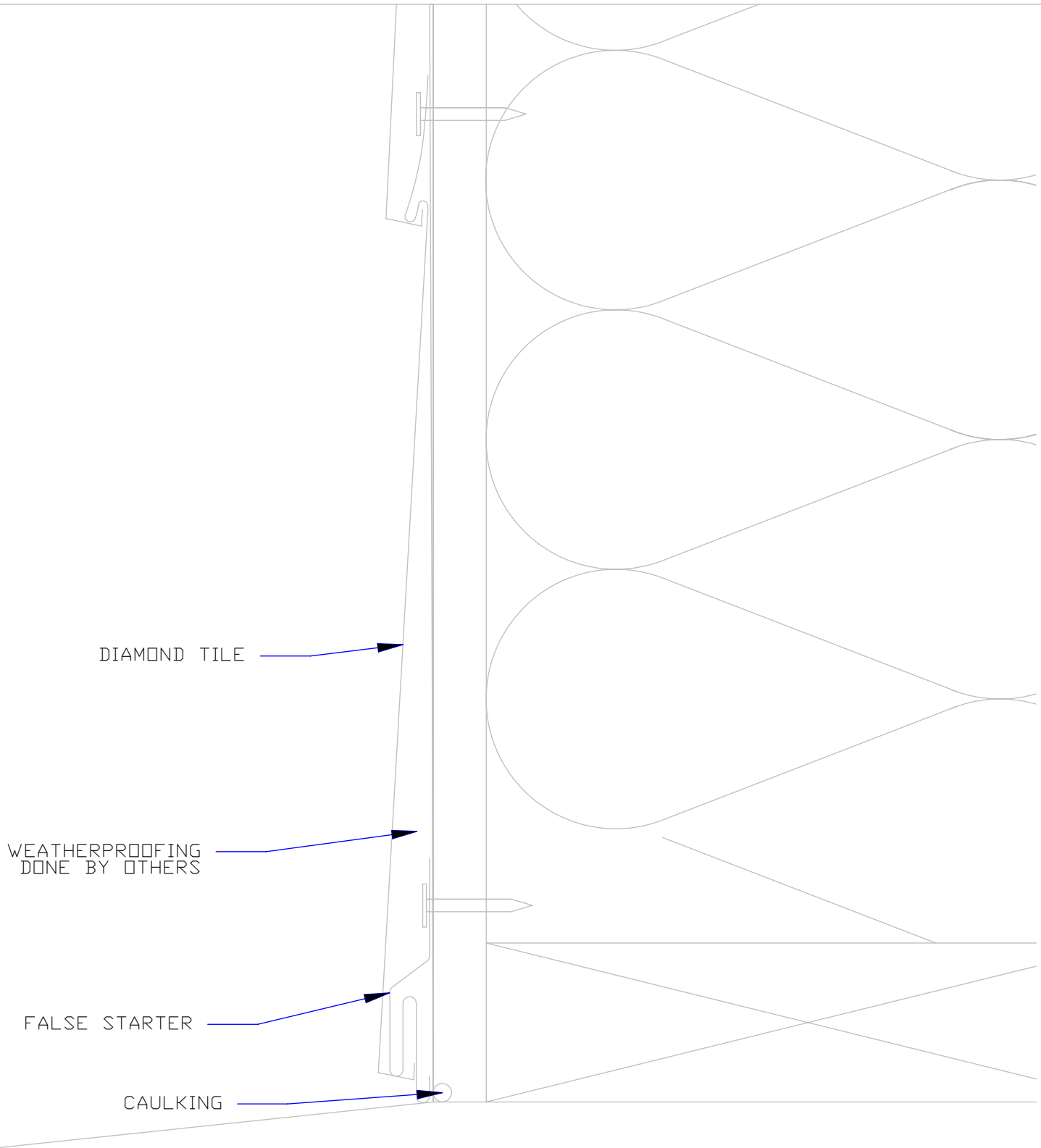
Diamond Tile

Detail Wall

3


 MILLENNIUM FORMS	Material	Sizes	Finish	Colors
	Stainless Steel	8" x 8-3/8" +/-1/16" 0.018" +/- .002	Bright (BA) Mill (2B)	See color selection chart
	Zalmag	8" x 8-3/8" +/-1/16" 0.018" +/- .002	Natural Pre-Patina II Black	See color selection chart

Revised 2017

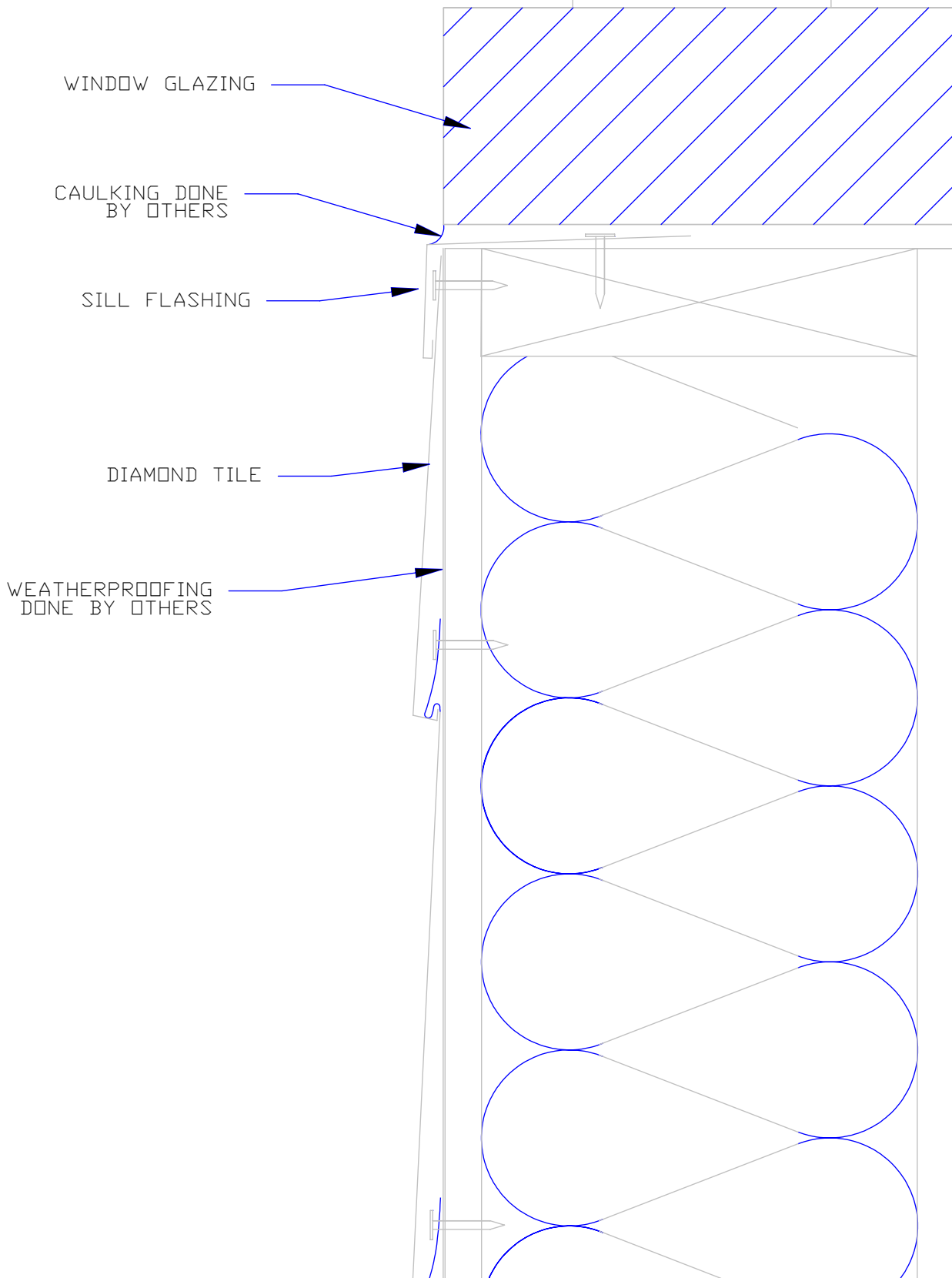


Starter/ False Starter

4

 MILLENNIUM FORMS	Material	Sizes	Finish	Colors
	Stainless Steel	8" x 8-3/8" +/-1/16" 0.018" +/- .002	Bright (BA) Mill (2B)	See color selection chart
Zalmag	8" x 8-3/8" +/-1/16" 0.018" +/- .002	Natural Pre-Patina II Black	See color selection chart	


Revised 2017



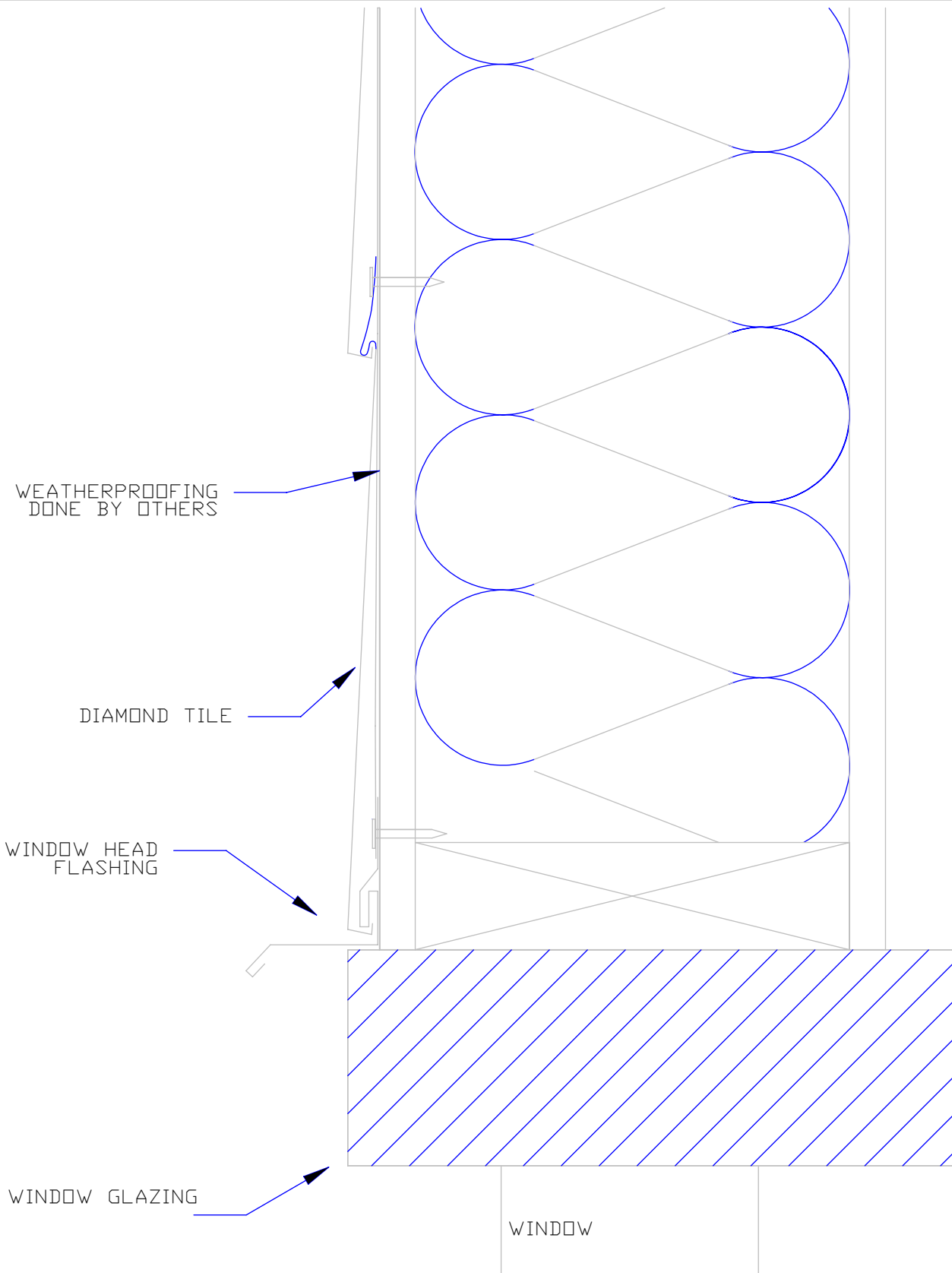
Diamond Tile

Window Sill

5


 MILLENNIUM FORMS	Material	Sizes	Finish	Colors
	Stainless Steel	8" x 8-3/8" +/- 1/16" 0.018" +/- .002	Bright (BA) Mill (2B)	See color selection chart
Zalmag	8" x 8-3/8" +/- 1/16" 0.018" +/- .002	Natural Pre-Patina II Black	See color selection chart	

Revised 2017

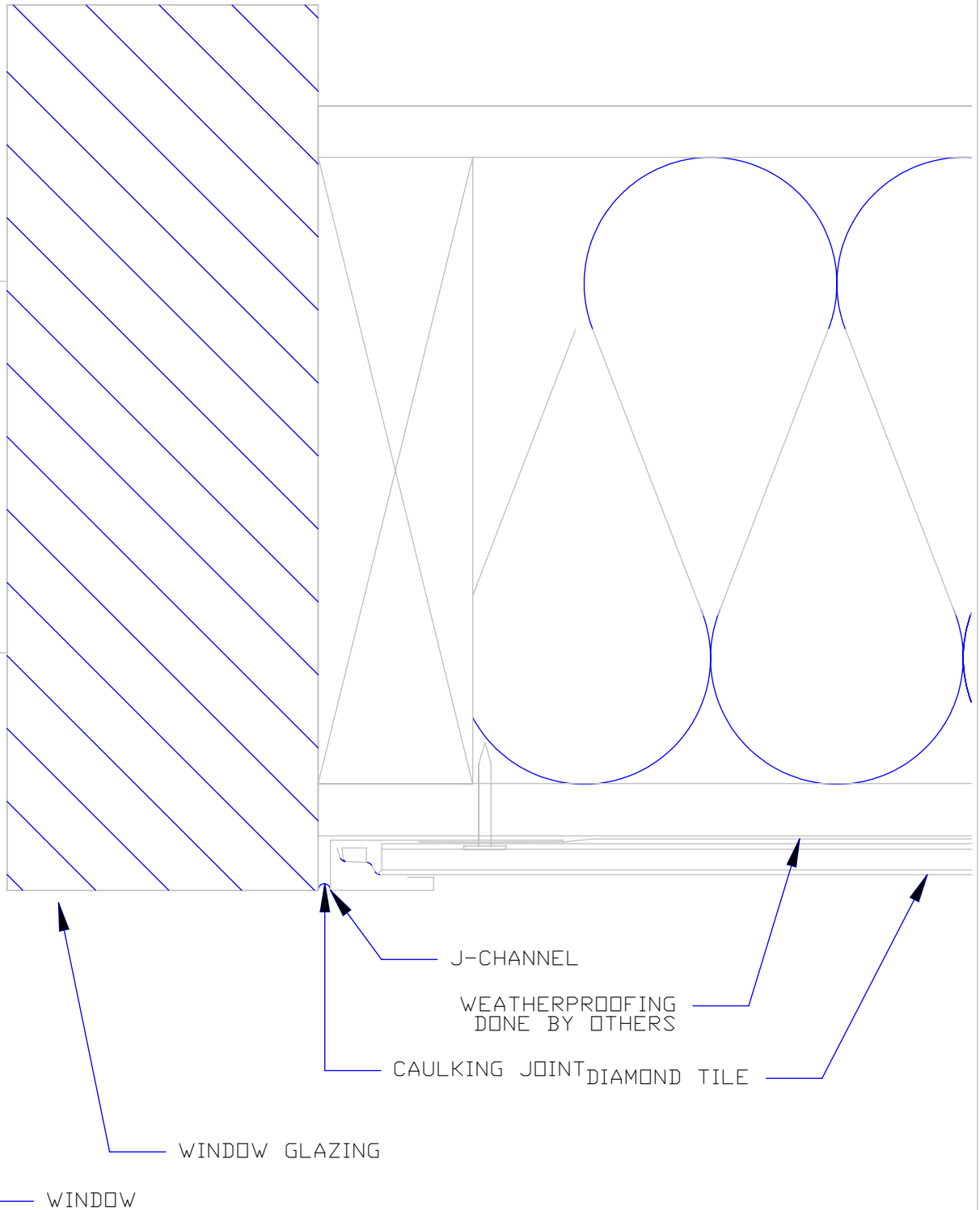


Window Head

6


 MILLENNIUM FORMS	Material	Sizes	Finish	Colors
	Stainless Steel	8" x 8-3/8" +/- 1/16" 0.018" +/- .002	Bright (BA) Mill (2B)	See color selection chart
Zalmag	8" x 8-3/8" +/- 1/16" 0.018" +/- .002	Natural Pre-Patina II Black	See color selection chart	

Revised 2017

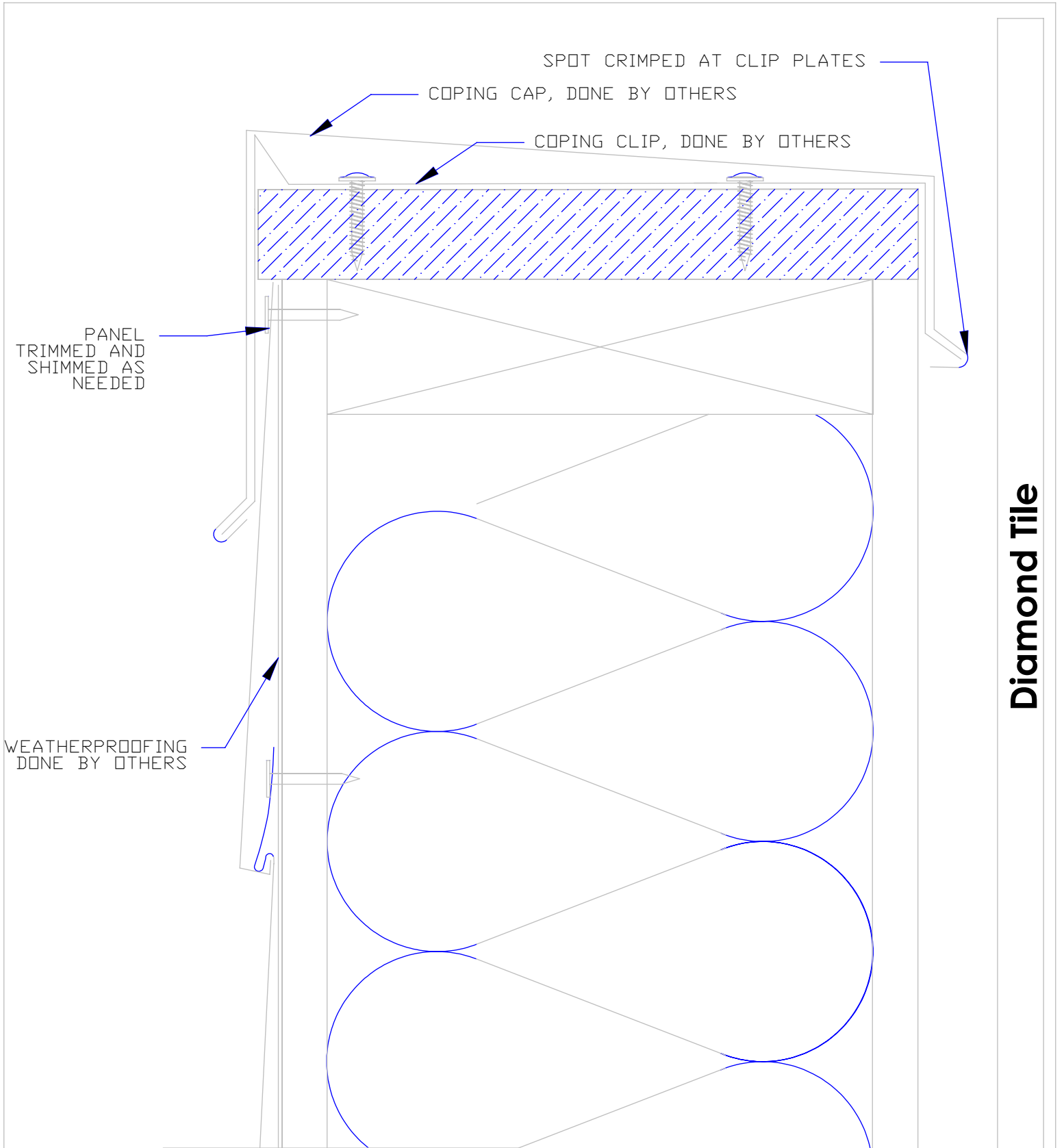


Window Jam

7

 MILLENNIUM FORMS	Material	Sizes	Finish	Colors
	Stainless Steel	8" x 8-3/8" +/-1/16" 0.018" +/- .002	Bright (BA) Mill (2B)	See color selection chart
Zalmag	8" x 8-3/8" +/-1/16" 0.018" +/- .002	Natural Pre-Patina II Black	See color selection chart	


Revised 2017



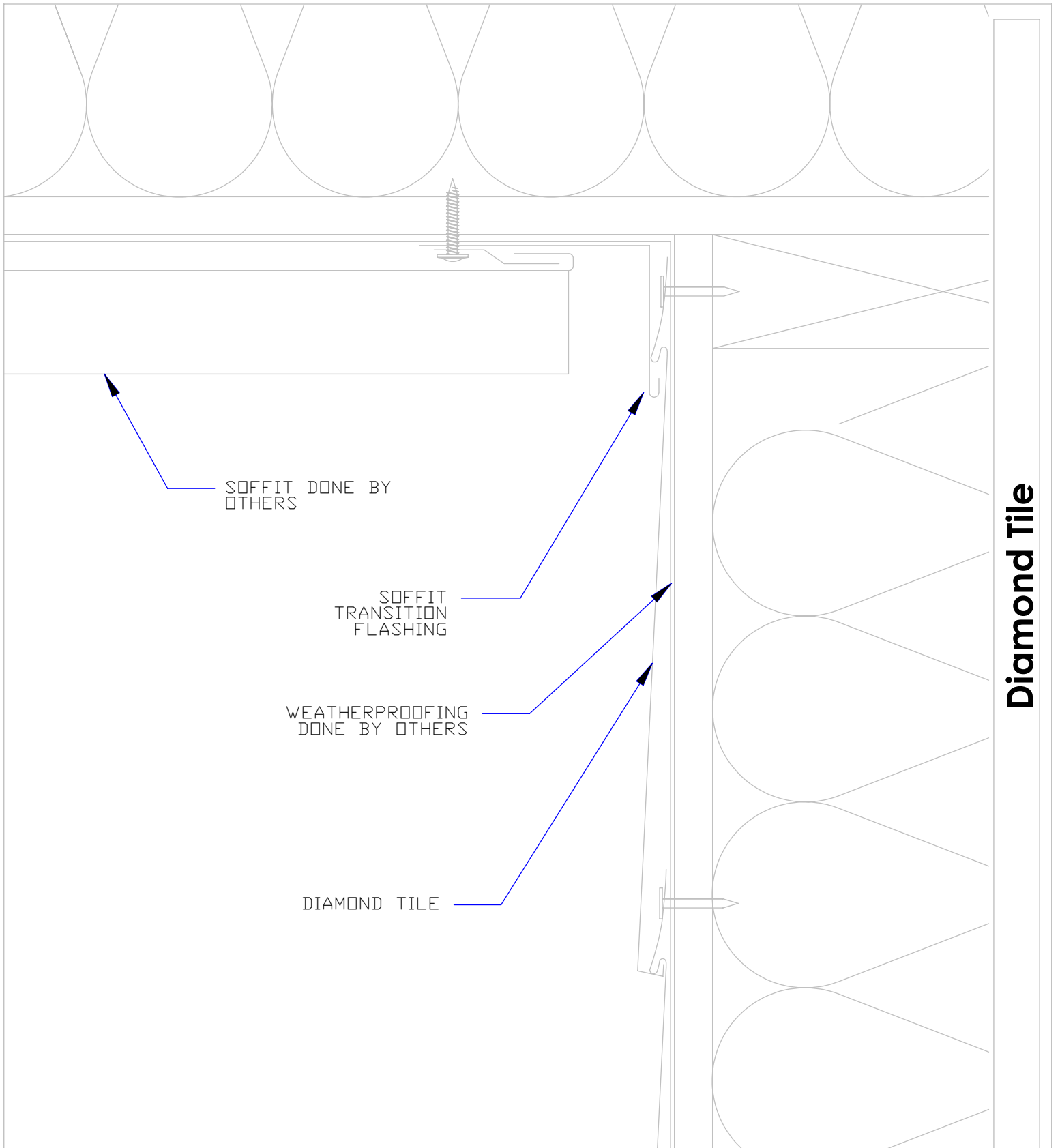
Diamond Tile

Coping

8

 MILLENNIUM FORMS	Material	Sizes	Finish	Colors
	Stainless Steel	8" x 8-3/8" +/-1/16" 0.018" +/- .002	Bright (BA) Mill (2B)	See color selection chart
Zalmag	8" x 8-3/8" +/-1/16" 0.018" +/- .002	Natural Pre-Patina II Black	See color selection chart	


Revised 2017



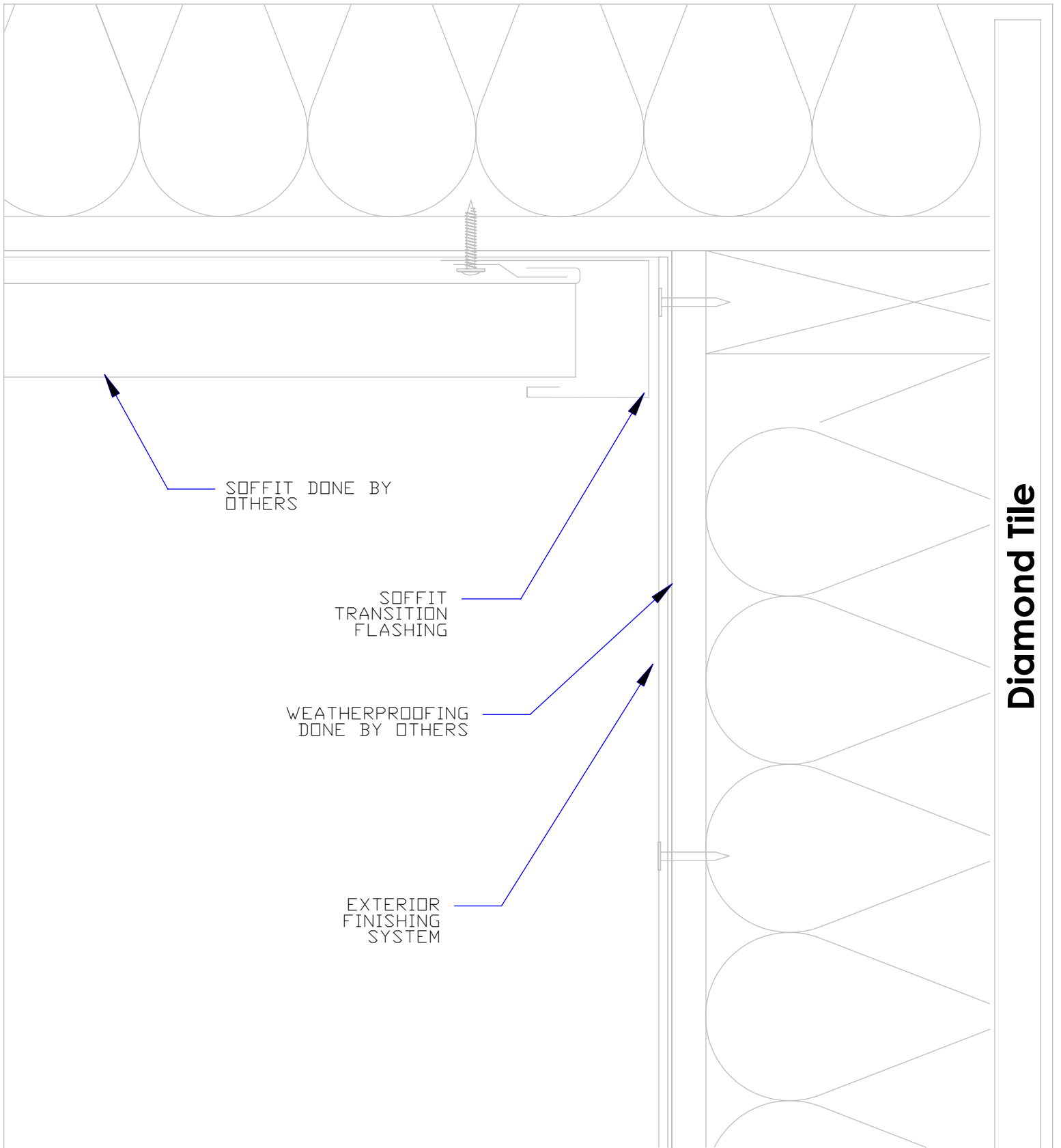
Diamond Tile

Soffit Termination

9


 MILLENNIUM FORMS	Material	Sizes	Finish	Colors
	Stainless Steel	8" x 8-3/8" +/-1/16" 0.018" +/- .002	Bright (BA) Mill (2B)	See color selection chart
Zalmag	8" x 8-3/8" +/-1/16" 0.018" +/- .002	Natural Pre-Patina II Black	See color selection chart	

Revised 2017

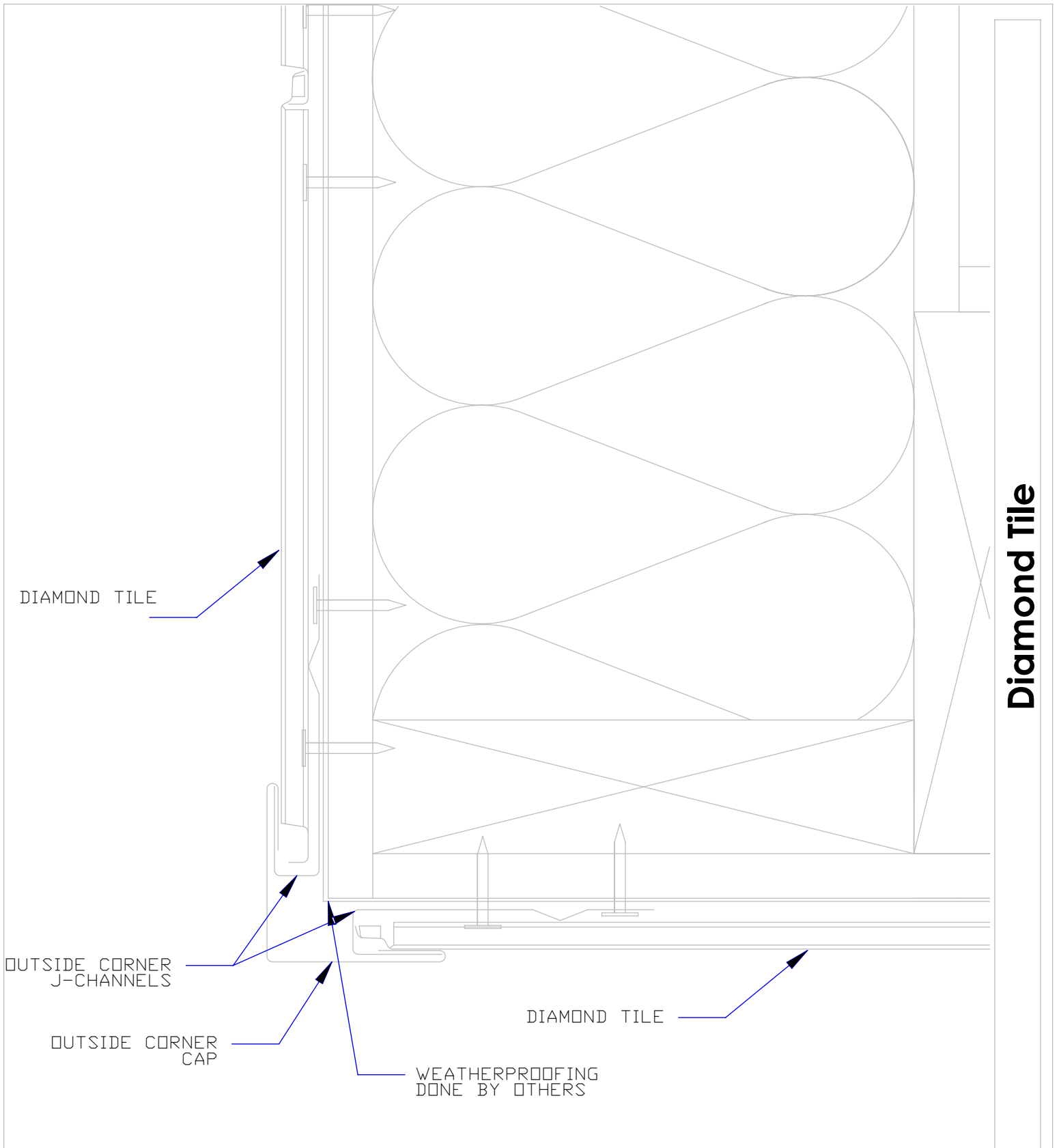


Soffit Termination II

10


 MILLENNIUM FORMS	Material	Sizes	Finish	Colors
	Stainless Steel	8" x 8-3/8" +/- 1/16" 0.018" +/- .002	Bright (BA) Mill (2B)	See color selection chart
Zalmag	8" x 8-3/8" +/- 1/16" 0.018" +/- .002	Natural Pre-Patina II Black	See color selection chart	

Revised 2017

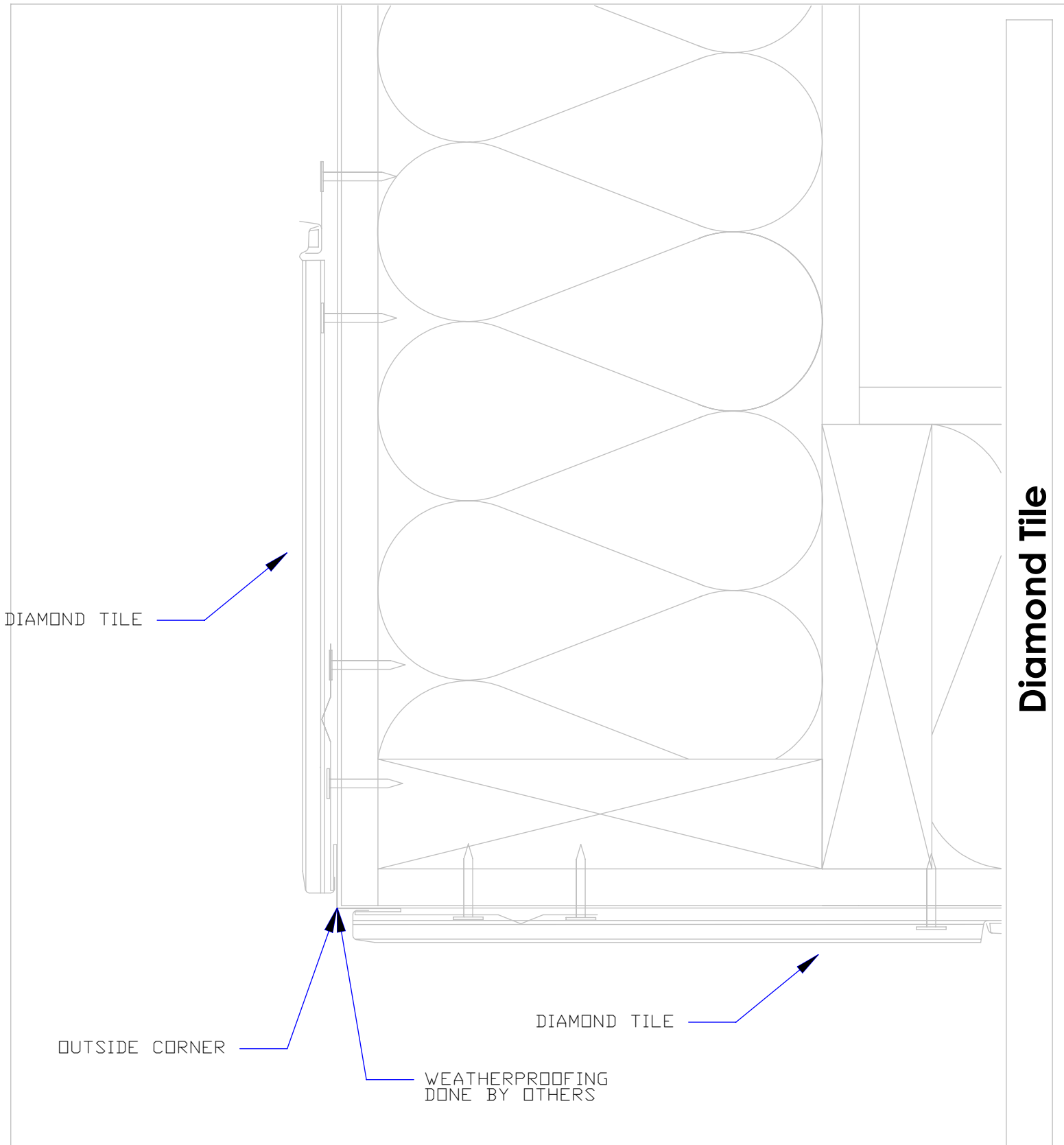


3 Piece Outside Corner

11

	Material	Sizes	Finish	Colors
	Stainless Steel	8" x 8-3/8" +/-1/16" 0.018" +/- .002	Bright (BA) Mill (2B)	See color selection chart
Zalmag	8" x 8-3/8" +/-1/16" 0.018" +/- .002	Natural Pre-Patina II Black	See color selection chart	


Revised 2017



Diamond Tile

1 Piece Outside Corner

12

	Material	Sizes	Finish	Colors
	Stainless Steel	8" x 8-3/8" +/- 1/16" 0.018" +/- .002	Bright (BA) Mill (2B)	See color selection chart
Zalmag	8" x 8-3/8" +/- 1/16" 0.018" +/- .002	Natural Pre-Patina II Black	See color selection chart	

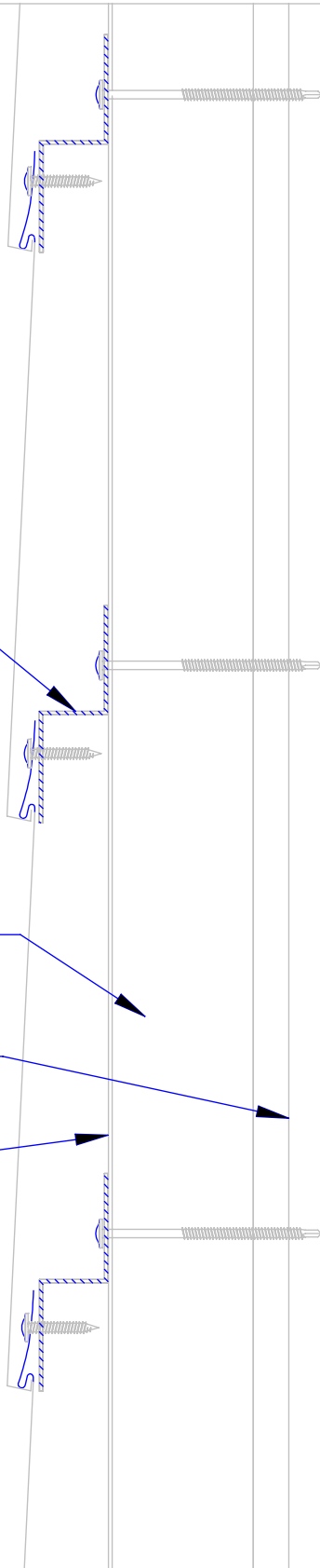
Revised 2017

ZEE ATTACHMENT
MAY BE RAN
VERTICALLY OR
HORIZONTALLY,
HORIZONTAL ZEE
MUST PROVIDE
DRAINAGE

25 PSI FOAM


STUD

WEATHERPROOFING
DONE BY OTHERS

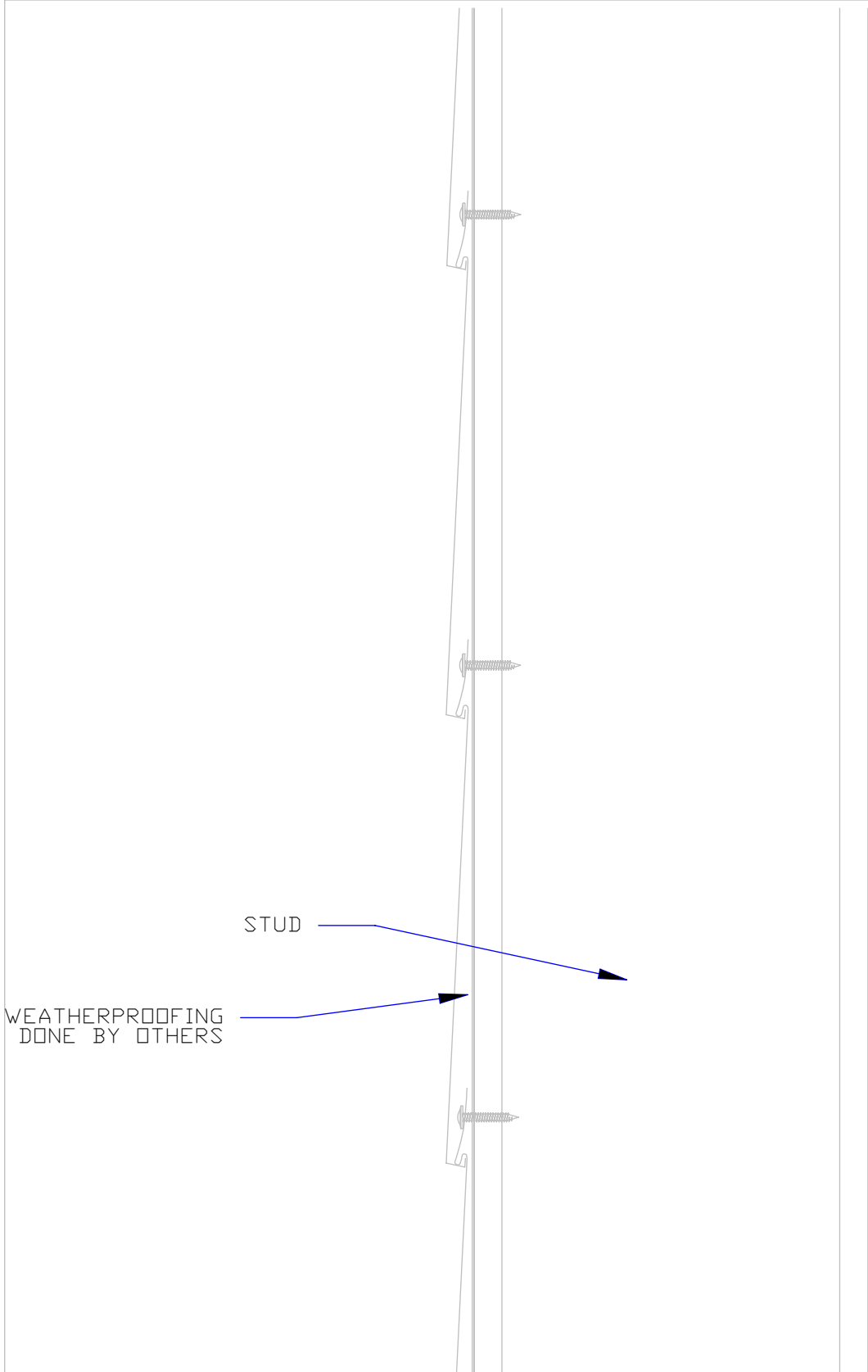


Exterior Insulation

13


 MILLENNIUM FORMS	Material	Sizes	Finish	Colors
	Stainless Steel	8" x 8-3/8" +/-1/16" 0.018" +/- .002	Bright (BA) Mill (2B)	See color selection chart
	Zalmag	8" x 8-3/8" +/-1/16" 0.018" +/- .002	Natural Pre-Patina II Black	See color selection chart

Revised 2017



Over Plywood

14

 MILLENNIUM FORMS	Material	Sizes	Finish	Colors
	Stainless Steel	8" x 8-3/8" +/-1/16" 0.018" +/- .002	Bright (BA) Mill (2B)	See color selection chart
	Zalmag	8" x 8-3/8" +/-1/16" 0.018" +/- .002	Natural Pre-Patina II Black	See color selection chart

Revised 2017