

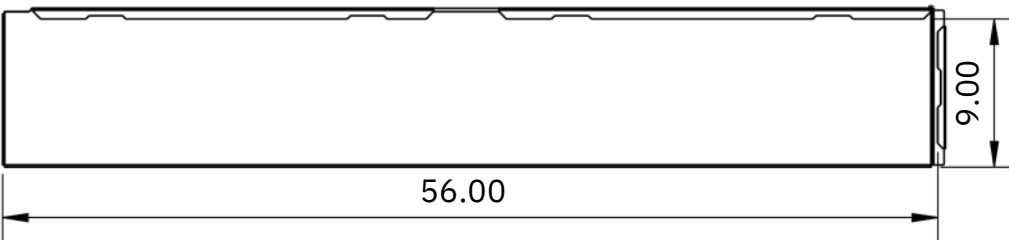
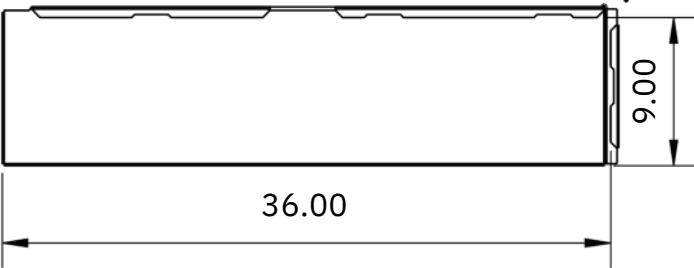
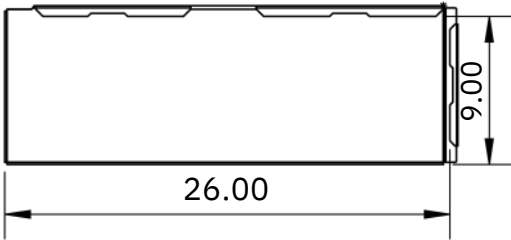
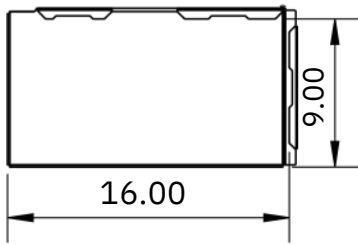


LAY-FLAT PANELS



MILLENNIUM
FORMS

STANDARD LAY-FLAT SIZES – 9" WIDTH



ALL STANDARD EXPOSED SIZES:

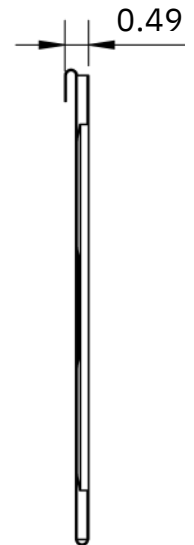
Width: 9", 13"

Length: 16", 20", 26", 36", 56", 116"

Recommended gauges are dependent on exposed size, material, and design intent.



OFFSET DETAIL

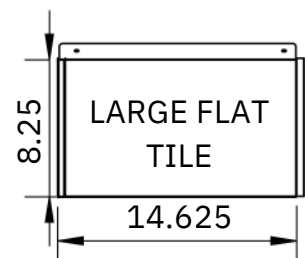


SYSTEM DEPTH = 5/8"

Exposed sizes have been standardized from 48" x 120" sheets. These sizes are offered to maximize material efficiency to offer the best price/sqft.

Typical sizes shown with additional sizes available upon request.

SCALE COMPARISON



MATERIAL	COLORS	FINISH	SIZES
Stainless Steel	See website for color selection chart	Bright (BA) Mill (2B)	24 gauge - 18 gauge (.025" - .050" nominal) operational thickness dependent upon panel sizes 0.375" Deep Maximum Length: 116"
ZALMAG®	N/A	Natural Pre-Patina II Black	24 gauge - 18 gauge (.025" - .050" nominal) operational thickness dependent upon panel sizes 0.375" Deep Maximum Length: 116"

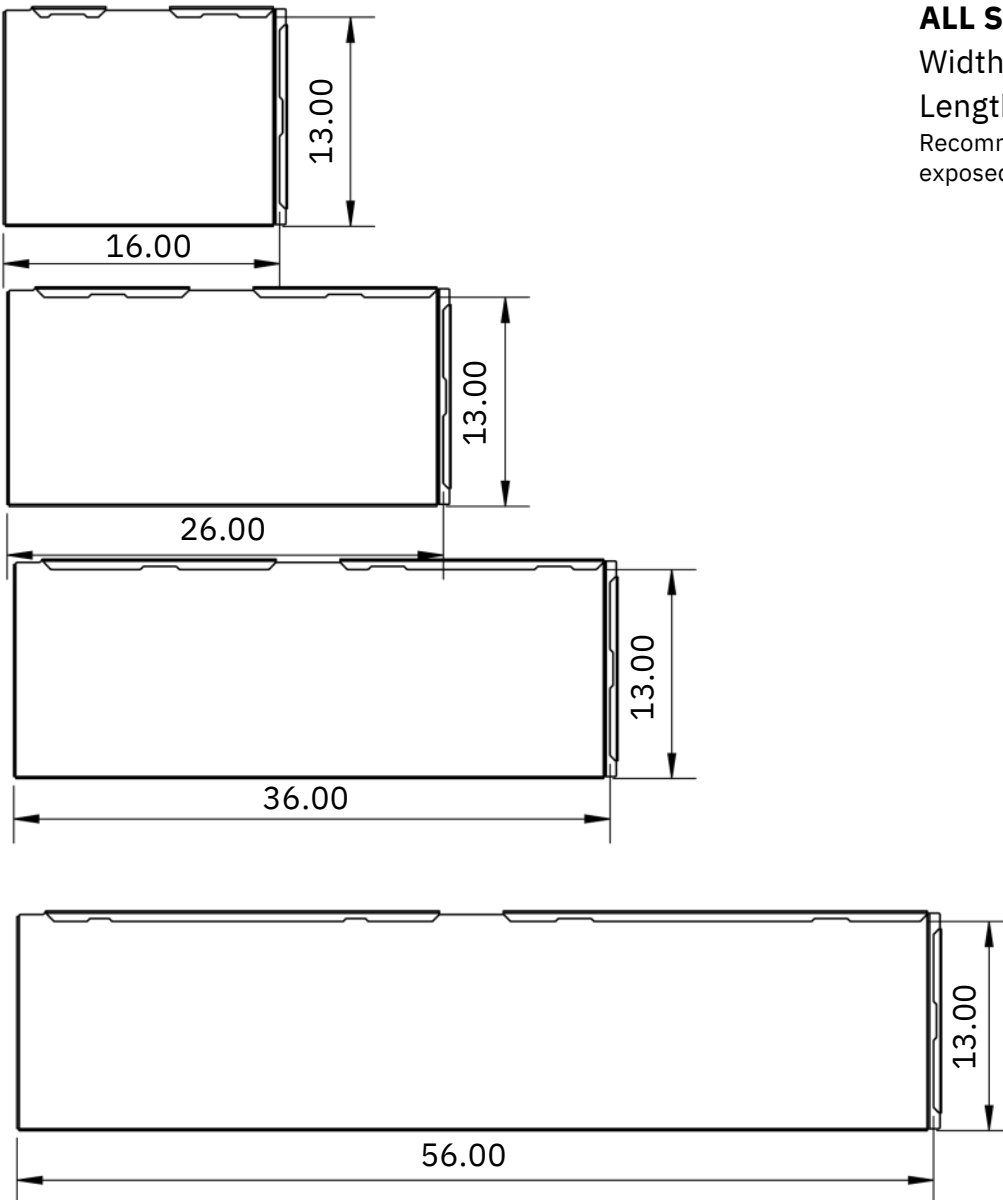
STANDARD LAY-FLAT SIZES – 13" WIDTH

ALL STANDARD EXPOSED SIZES:

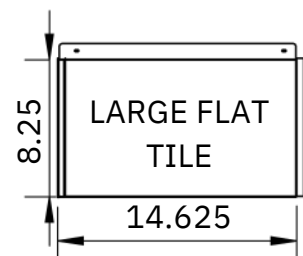
Width: 9", 13"

Length: 16", 20", 26", 36", 56", 116"

Recommended gauges are dependent on exposed size, material, and design intent.

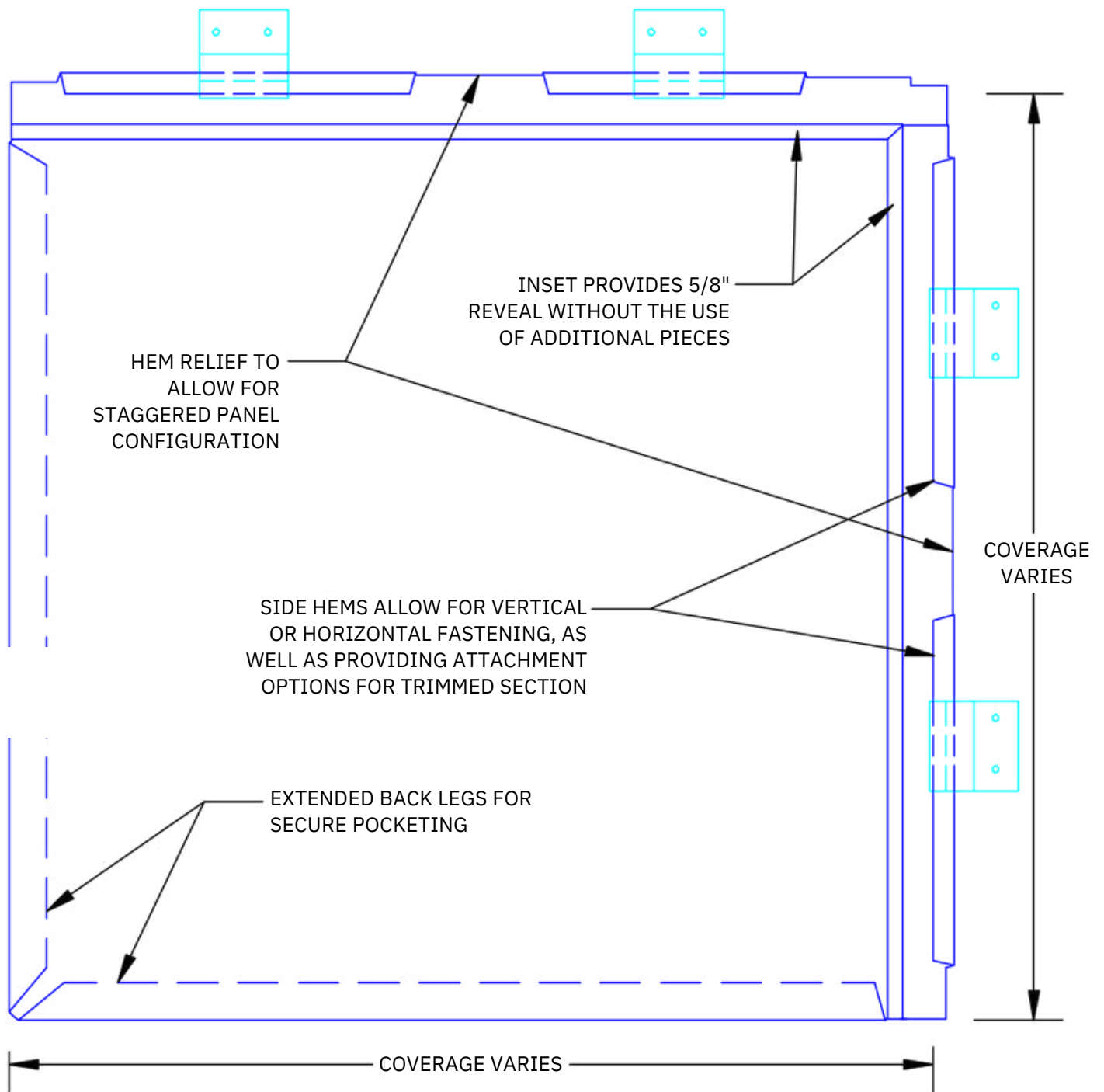


SCALE COMPARISON



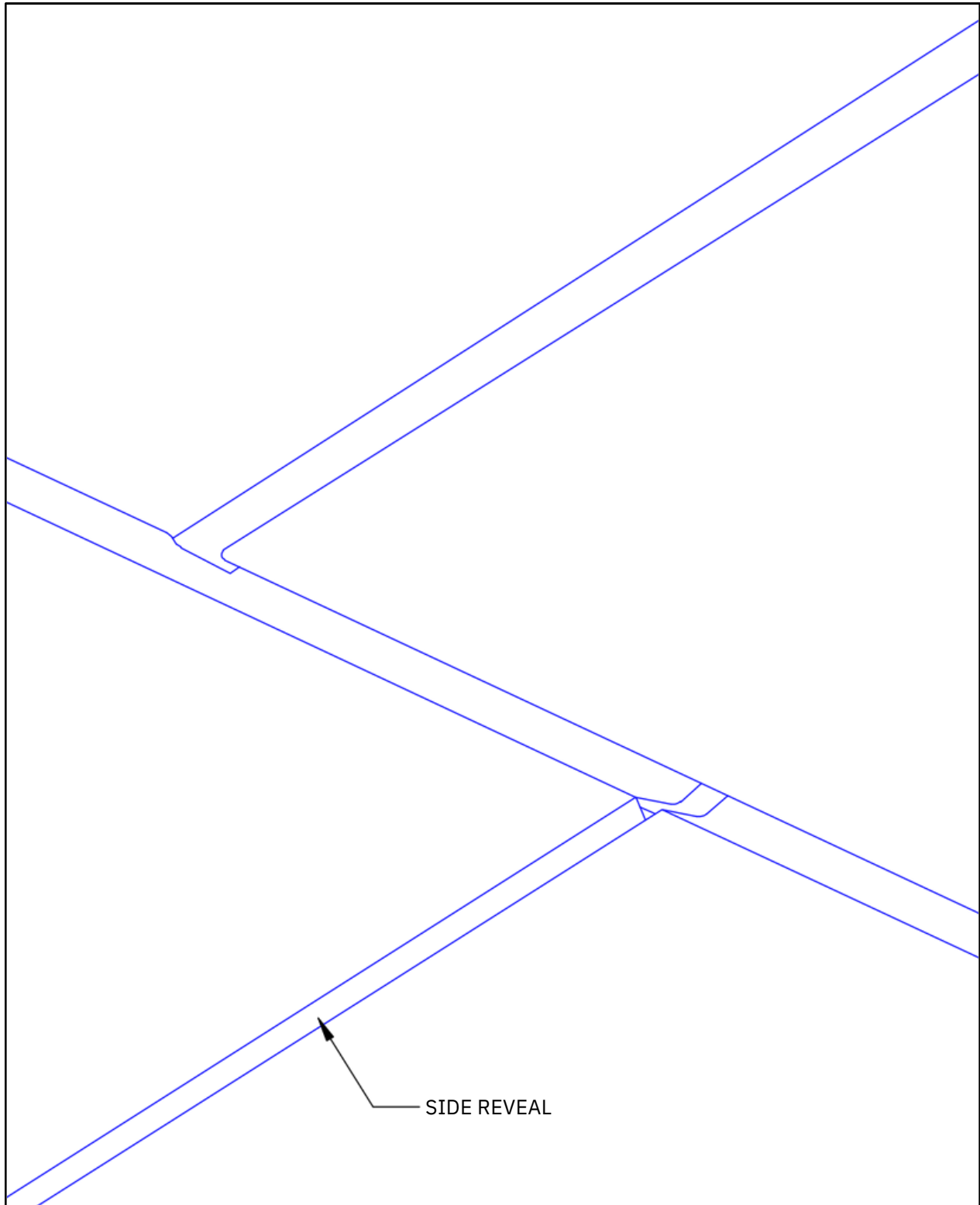
MATERIAL	COLORS	FINISH	SIZES
Stainless Steel	See website for color selection chart	Bright (BA) Mill (2B)	24 gauge - 18 gauge (.025" - .050" nominal) operational thickness dependent upon panel sizes 0.375" Deep Maximum Length: 116"
ZALMAG®	N/A	Natural Pre-Patina II Black	24 gauge - 18 gauge (.025" - .050" nominal) operational thickness dependent upon panel sizes 0.375" Deep Maximum Length: 116"

LAY-FLAT PANEL – PROFILE DETAILS



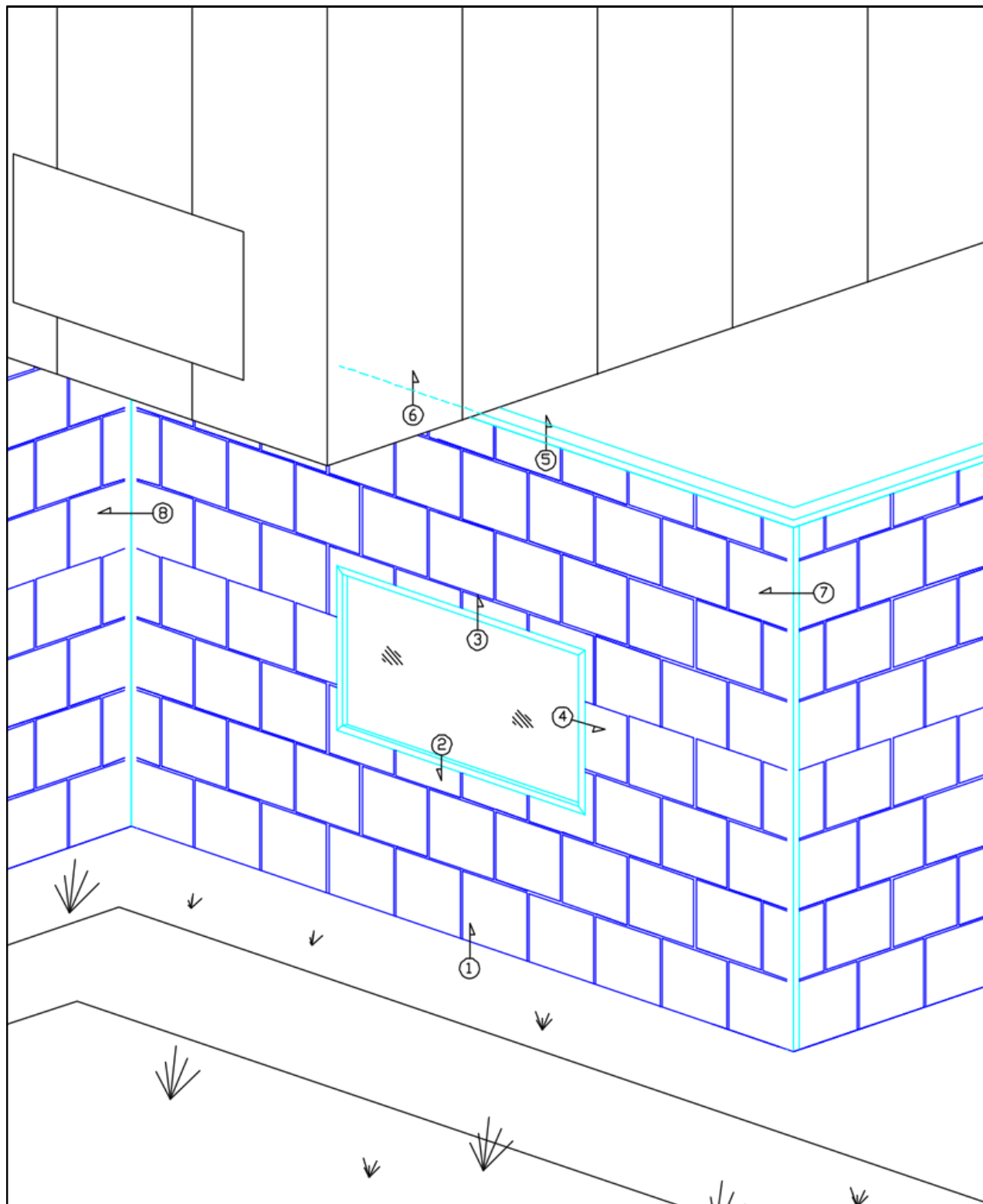
MATERIAL	COLORS	FINISH	SIZES
Stainless Steel	See website for color selection chart	Bright (BA) Mill (2B)	24 gauge - 18 gauge (.025" - .050" nominal) operational thickness dependent upon panel sizes 0.375" Deep Maximum Length: 116"
ZALMAG®	N/A	Natural Pre-Patina II Black	24 gauge - 18 gauge (.025" - .050" nominal) operational thickness dependent upon panel sizes 0.375" Deep Maximum Length: 116"

LAY-FLAT PANEL – PROFILE DETAILS



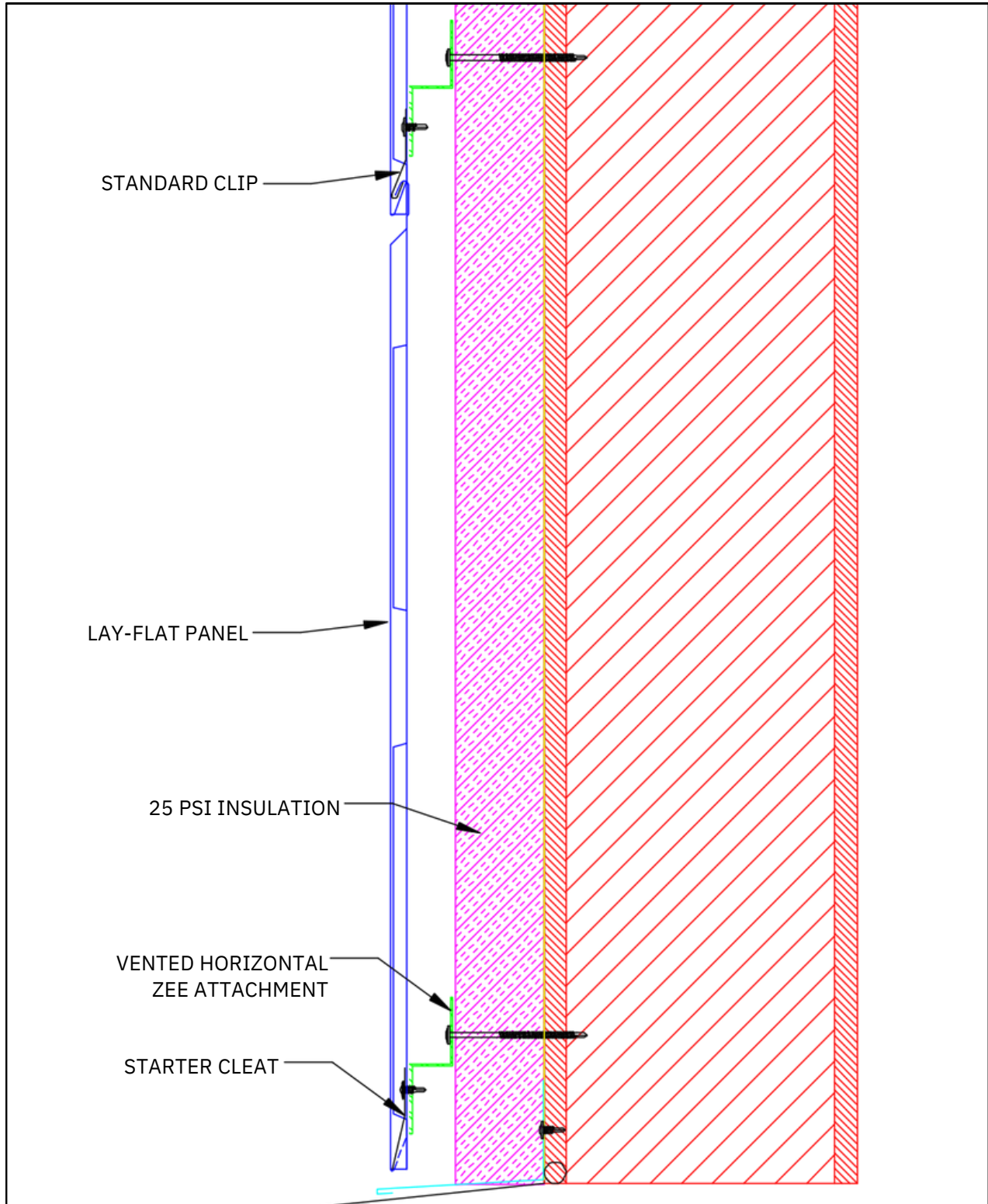
MATERIAL	COLORS	FINISH	SIZES
Stainless Steel	See website for color selection chart	Bright (BA) Mill (2B)	24 gauge - 18 gauge (.025" - .050" nominal) operational thickness dependent upon panel sizes 0.375" Deep Maximum Length: 116"
ZALMAG®	N/A	Natural Pre-Patina II Black	24 gauge - 18 gauge (.025" - .050" nominal) operational thickness dependent upon panel sizes 0.375" Deep Maximum Length: 116"

LAY-FLAT PANEL – DETAIL WALL



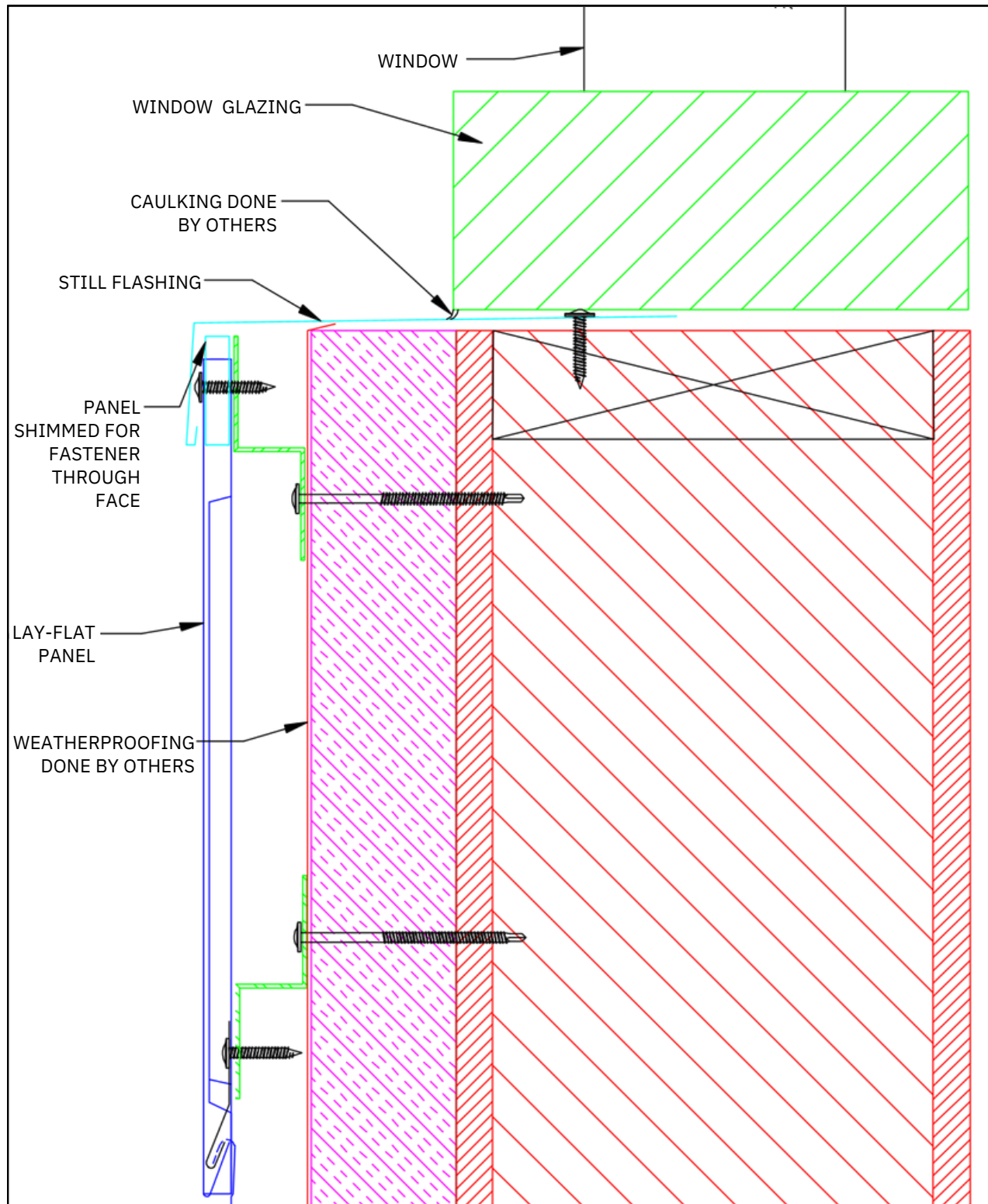
MATERIAL	COLORS	FINISH	SIZES
Stainless Steel	See website for color selection chart	Bright (BA) Mill (2B)	24 gauge - 18 gauge (.025" - .050" nominal) operational thickness dependent upon panel sizes 0.375" Deep Maximum Length: 116"
ZALMAG®	N/A	Natural Pre-Patina II Black	24 gauge - 18 gauge (.025" - .050" nominal) operational thickness dependent upon panel sizes 0.375" Deep Maximum Length: 116"

LAY-FLAT PANEL – SECTION BASE, DETAIL 1



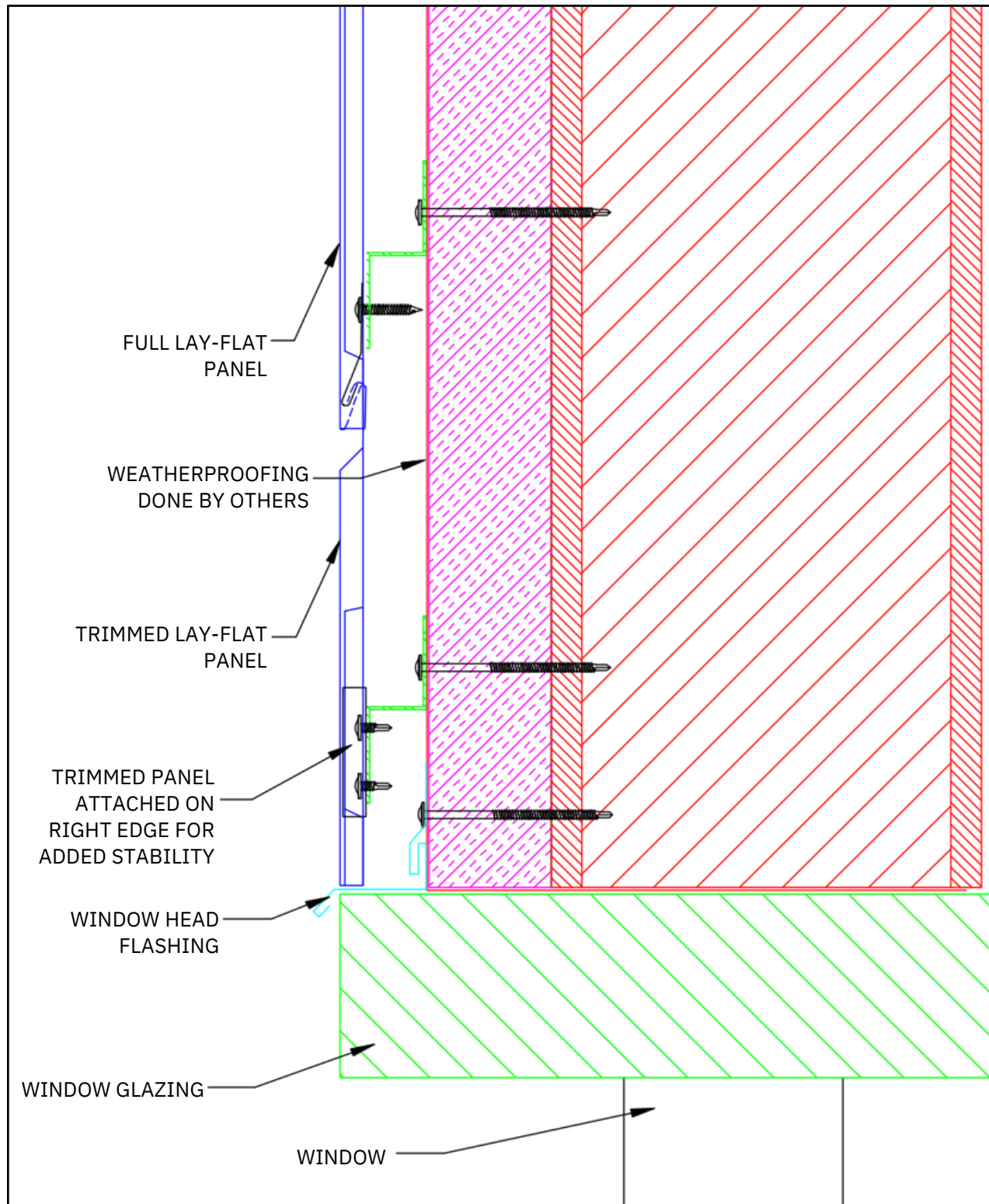
MATERIAL	COLORS	FINISH	SIZES
Stainless Steel	See website for color selection chart	Bright (BA) Mill (2B)	24 gauge - 18 gauge (.025" - .050" nominal) operational thickness dependent upon panel sizes 0.375" Deep Maximum Length: 116"
ZALMAG®	N/A	Natural Pre-Patina II Black	24 gauge - 18 gauge (.025" - .050" nominal) operational thickness dependent upon panel sizes 0.375" Deep Maximum Length: 116"

LAY-FLAT PANEL – WINDOW SILL, DETAIL 2



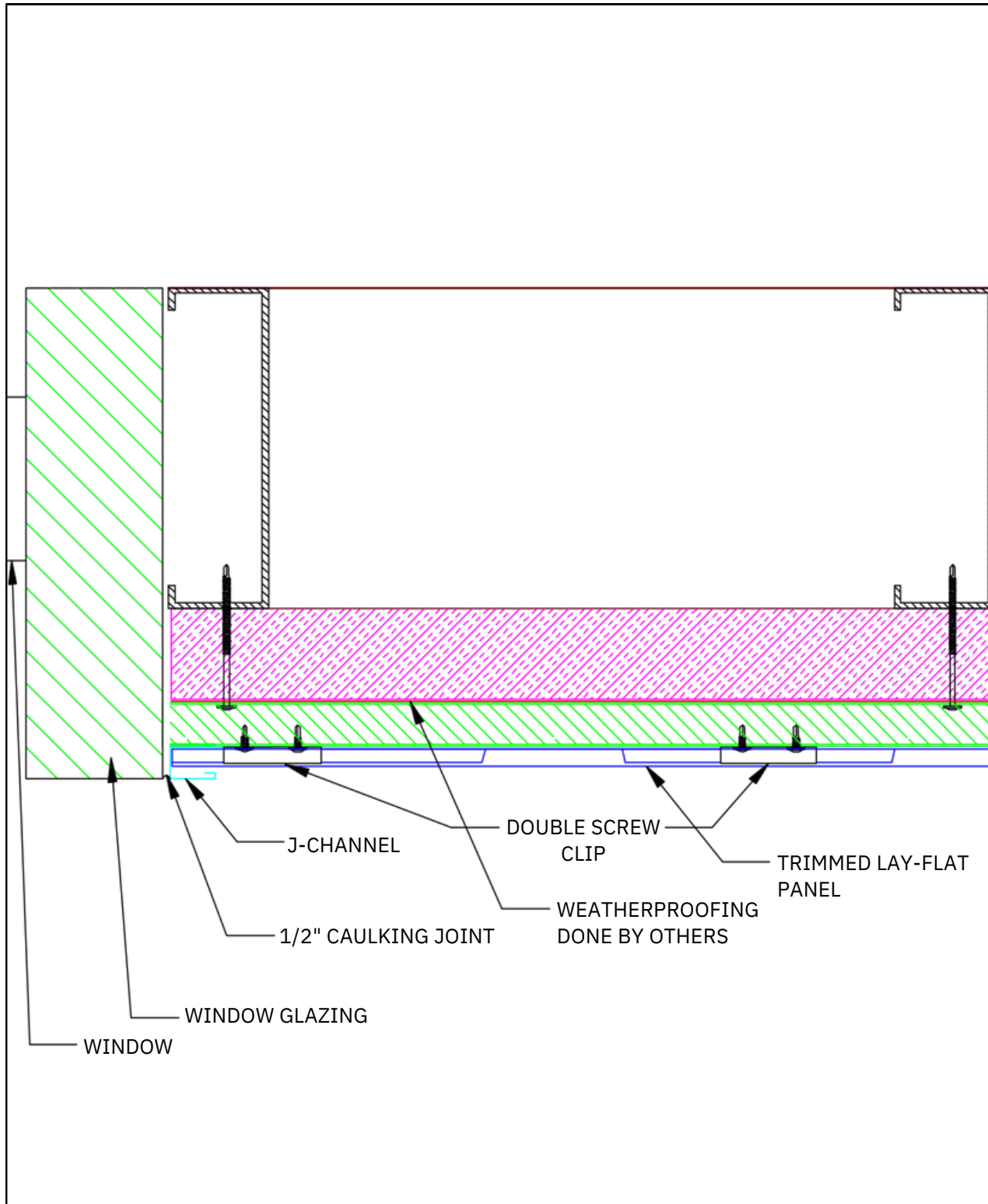
MATERIAL	COLORS	FINISH	SIZES
Stainless Steel	See website for color selection chart	Bright (BA) Mill (2B)	24 gauge - 18 gauge (.025" - .050" nominal) operational thickness dependent upon panel sizes 0.375" Deep Maximum Length: 116"
ZALMAG®	N/A	Natural Pre-Patina II Black	24 gauge - 18 gauge (.025" - .050" nominal) operational thickness dependent upon panel sizes 0.375" Deep Maximum Length: 116"

LAY-FLAT PANEL – WINDOW HEAD, DETAIL 3



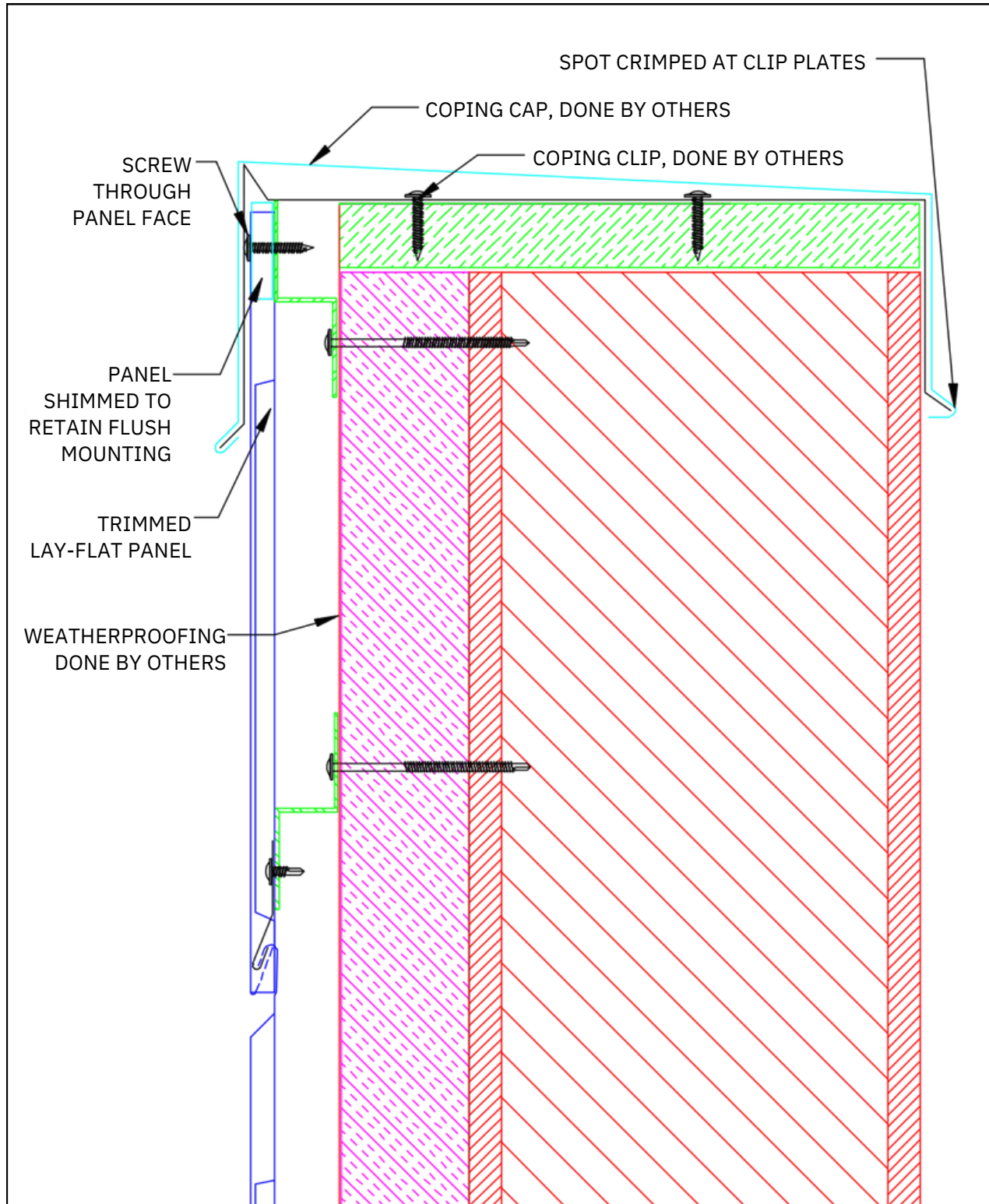
MATERIAL	COLORS	FINISH	SIZES
Stainless Steel	See website for color selection chart	Bright (BA) Mill (2B)	24 gauge - 18 gauge (.025" - .050" nominal) operational thickness dependent upon panel sizes 0.375" Deep Maximum Length: 116"
ZALMAG®	N/A	Natural Pre-Patina II Black	24 gauge - 18 gauge (.025" - .050" nominal) operational thickness dependent upon panel sizes 0.375" Deep Maximum Length: 116"

LAY-FLAT PANEL – WINDOW JAM, DETAIL 4



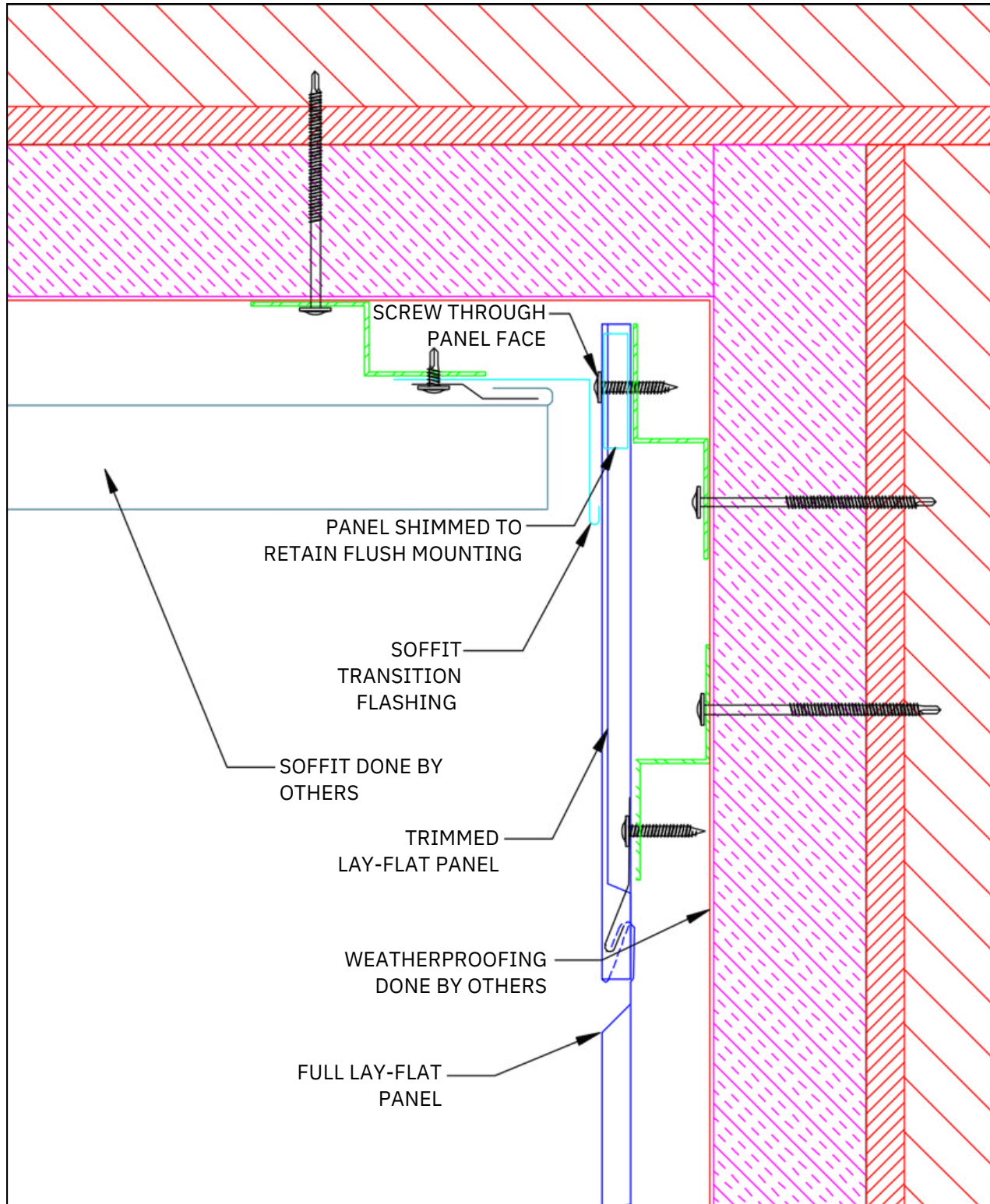
MATERIAL	COLORS	FINISH	SIZES
Stainless Steel	See website for color selection chart	Bright (BA) Mill (2B)	24 gauge - 18 gauge (.025" - .050" nominal) operational thickness dependent upon panel sizes 0.375" Deep Maximum Length: 116"
ZALMAG®	N/A	Natural Pre-Patina II Black	24 gauge - 18 gauge (.025" - .050" nominal) operational thickness dependent upon panel sizes 0.375" Deep Maximum Length: 116"

LAY-FLAT PANEL – COPING, DETAIL 5



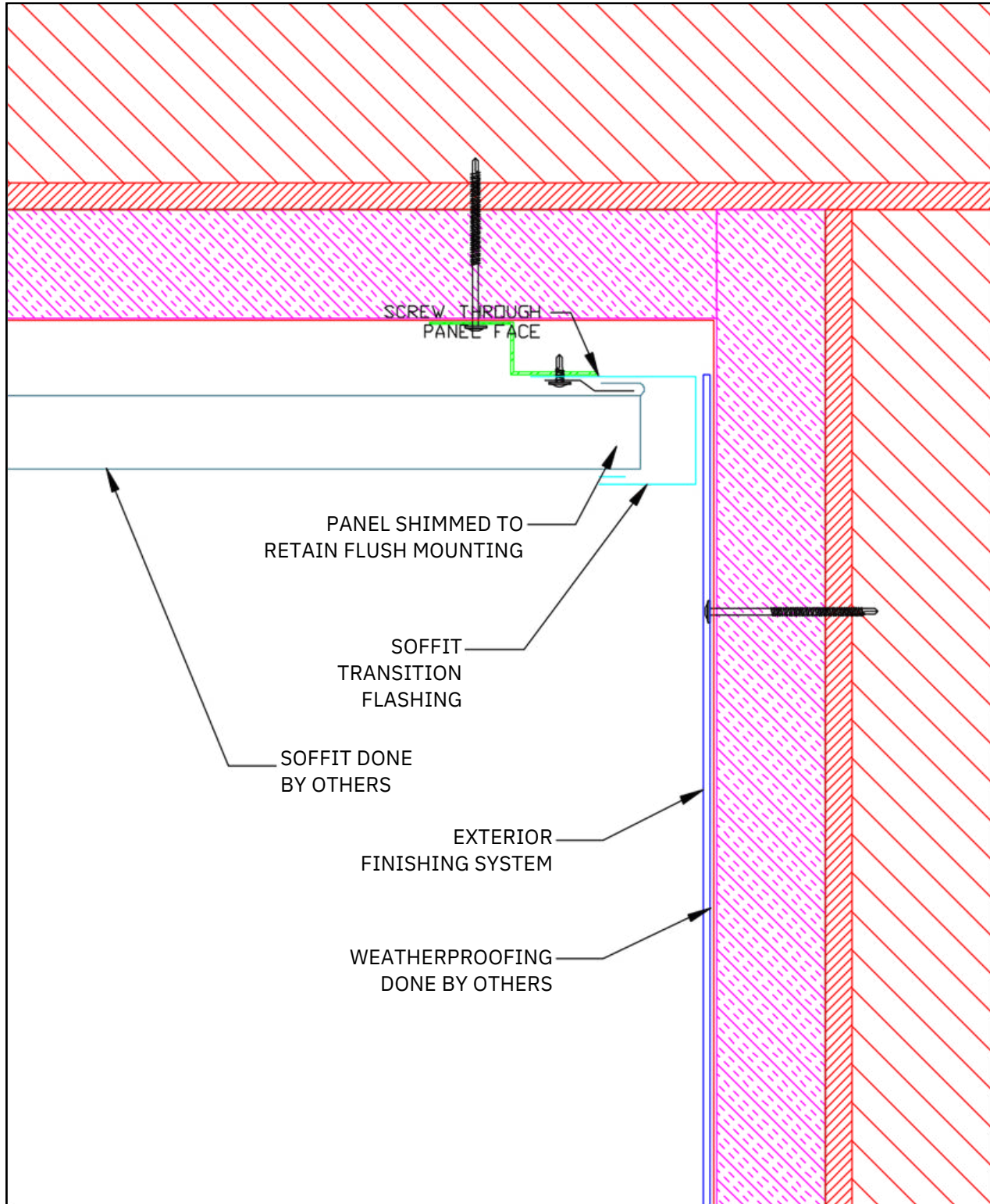
MATERIAL	COLORS	FINISH	SIZES
Stainless Steel	See website for color selection chart	Bright (BA) Mill (2B)	24 gauge - 18 gauge (.025" - .050" nominal) operational thickness dependent upon panel sizes 0.375" Deep Maximum Length: 116"
ZALMAG®	N/A	Natural Pre-Patina II Black	24 gauge - 18 gauge (.025" - .050" nominal) operational thickness dependent upon panel sizes 0.375" Deep Maximum Length: 116"

LAY-FLAT PANEL – SOFFIT TRANSITION, DETAIL 6A



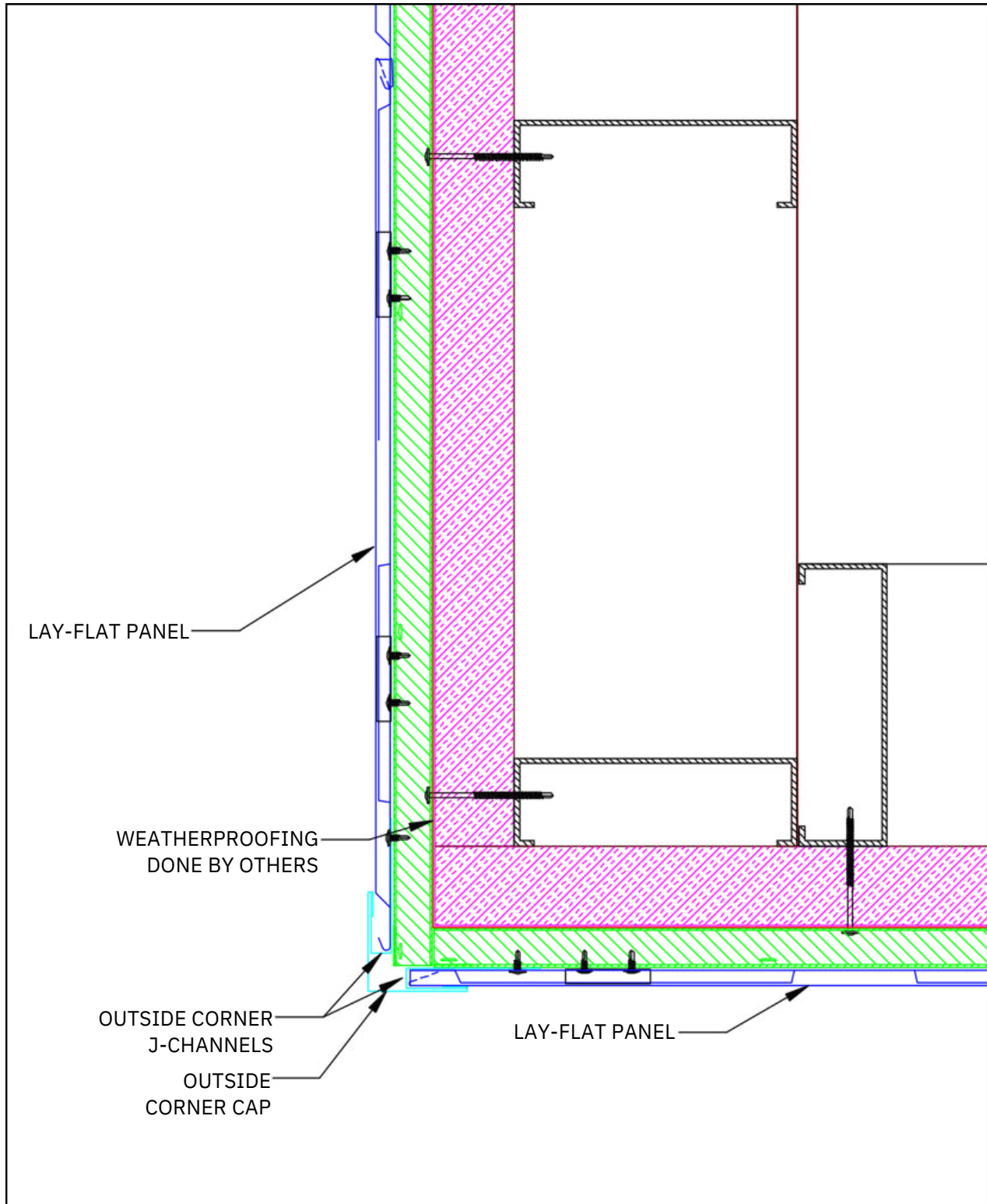
MATERIAL	COLORS	FINISH	SIZES
Stainless Steel	See website for color selection chart	Bright (BA) Mill (2B)	24 gauge - 18 gauge (.025" - .050" nominal) operational thickness dependent upon panel sizes 0.375" Deep Maximum Length: 116"
ZALMAG®	N/A	Natural Pre-Patina II Black	24 gauge - 18 gauge (.025" - .050" nominal) operational thickness dependent upon panel sizes 0.375" Deep Maximum Length: 116"

LAY-FLAT PANEL – SOFFIT TRANSITION, DETAIL 6B



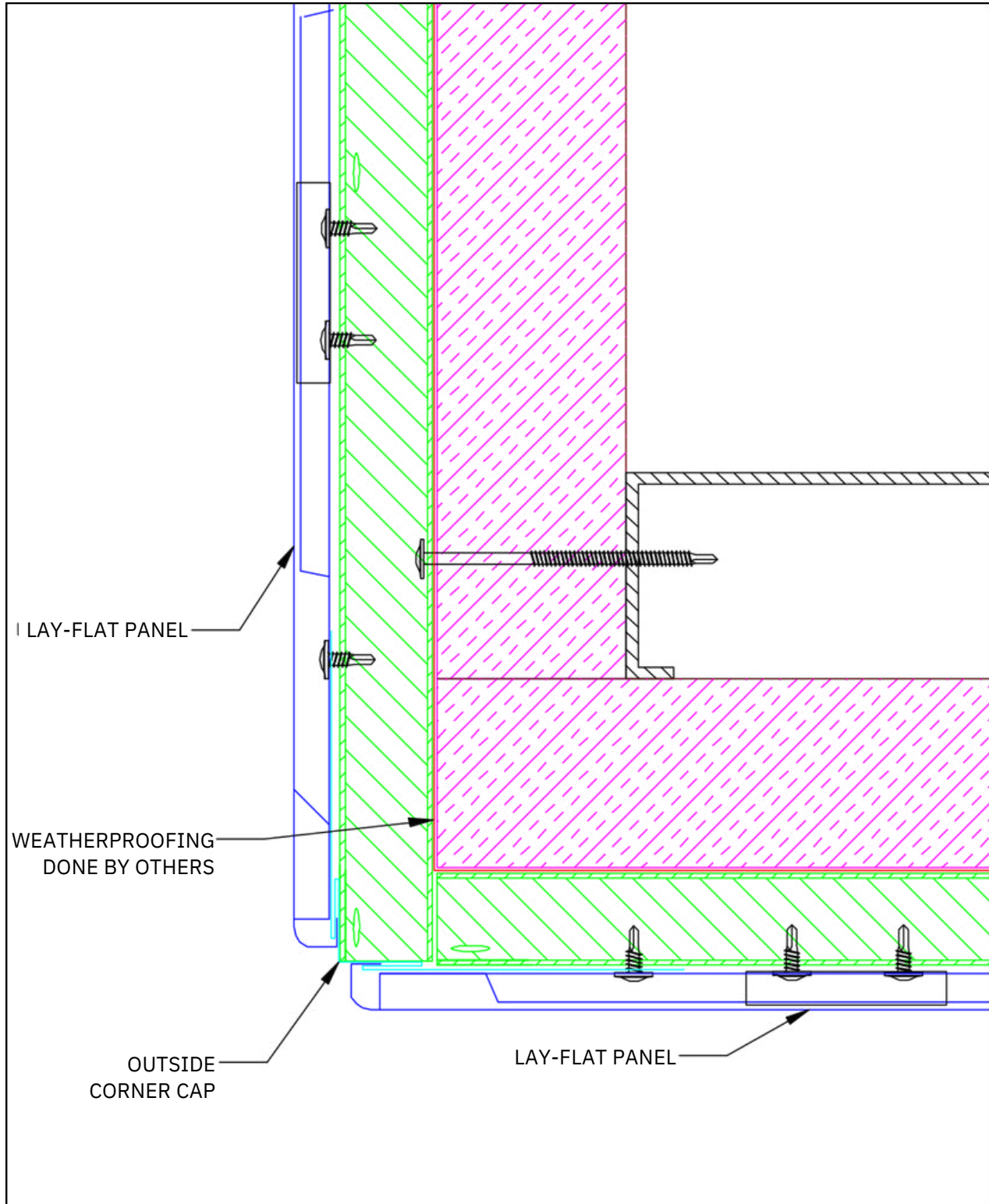
MATERIAL	COLORS	FINISH	SIZES
Stainless Steel	See website for color selection chart	Bright (BA) Mill (2B)	24 gauge - 18 gauge (.025" - .050" nominal) operational thickness dependent upon panel sizes 0.375" Deep Maximum Length: 116"
ZALMAG®	N/A	Natural Pre-Patina II Black	24 gauge - 18 gauge (.025" - .050" nominal) operational thickness dependent upon panel sizes 0.375" Deep Maximum Length: 116"

LAY-FLAT PANEL – OUTSIDE CORNER, DETAIL 7A



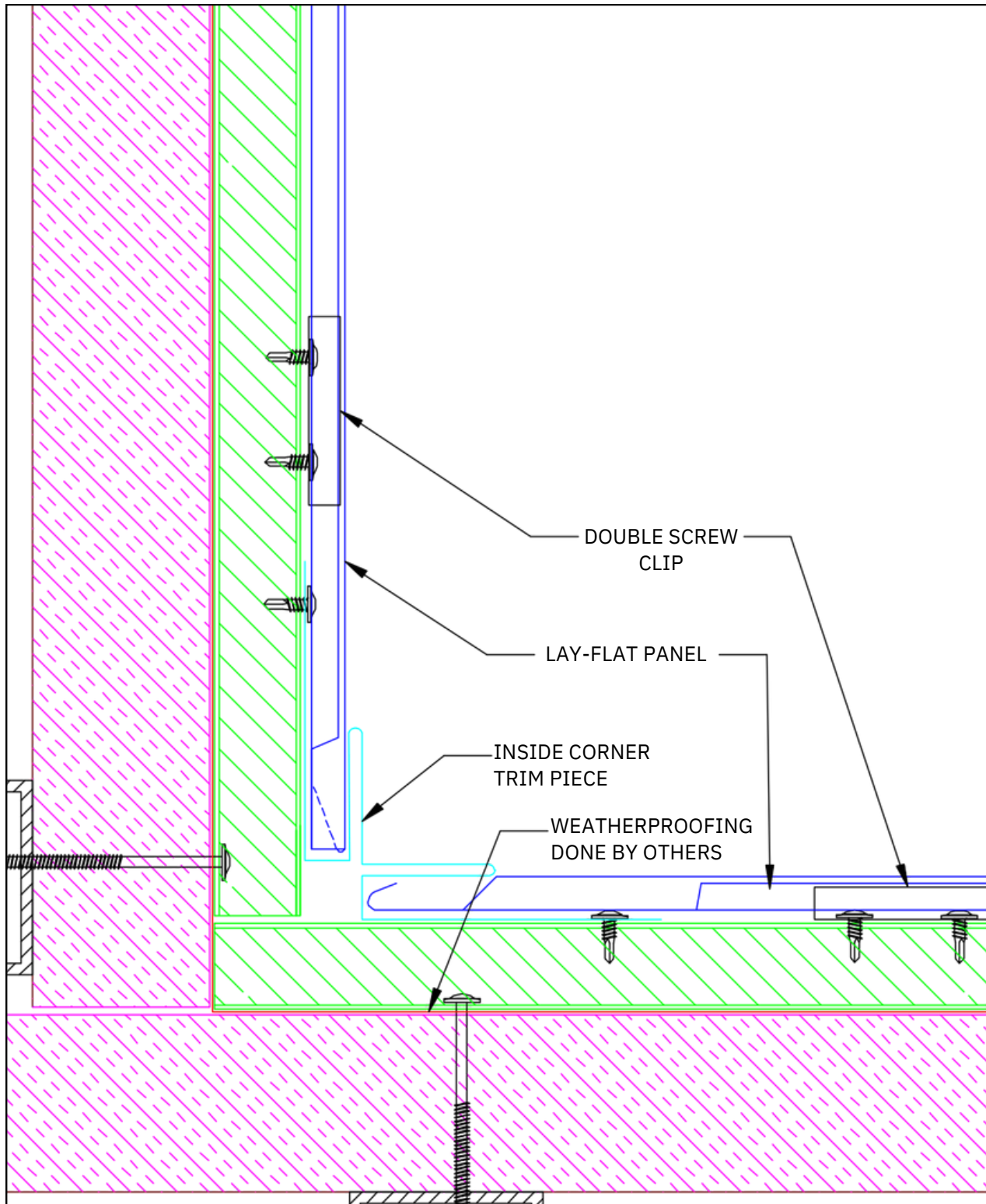
MATERIAL	COLORS	FINISH	SIZES
Stainless Steel	See website for color selection chart	Bright (BA) Mill (2B)	24 gauge - 18 gauge (.025" - .050" nominal) operational thickness dependent upon panel sizes 0.375" Deep Maximum Length: 116"
ZALMAG®	N/A	Natural Pre-Patina II Black	24 gauge - 18 gauge (.025" - .050" nominal) operational thickness dependent upon panel sizes 0.375" Deep Maximum Length: 116"

LAY-FLAT PANEL – OUTSIDE CORNER, DETAIL 7B

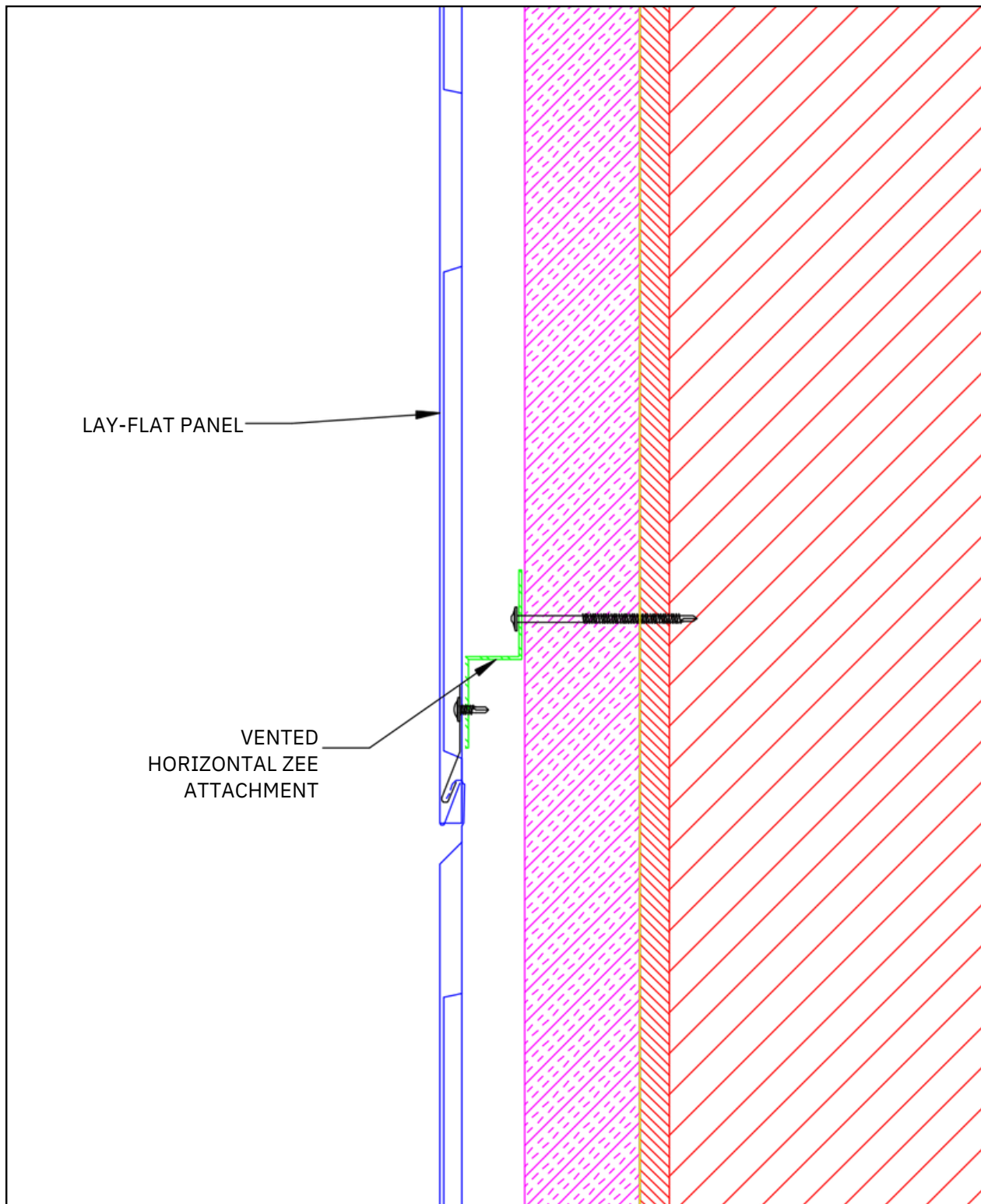


MATERIAL	COLORS	FINISH	SIZES
Stainless Steel	See website for color selection chart	Bright (BA) Mill (2B)	24 gauge - 18 gauge (.025" - .050" nominal) operational thickness dependent upon panel sizes 0.375" Deep Maximum Length: 116"
ZALMAG®	N/A	Natural Pre-Patina II Black	24 gauge - 18 gauge (.025" - .050" nominal) operational thickness dependent upon panel sizes 0.375" Deep Maximum Length: 116"

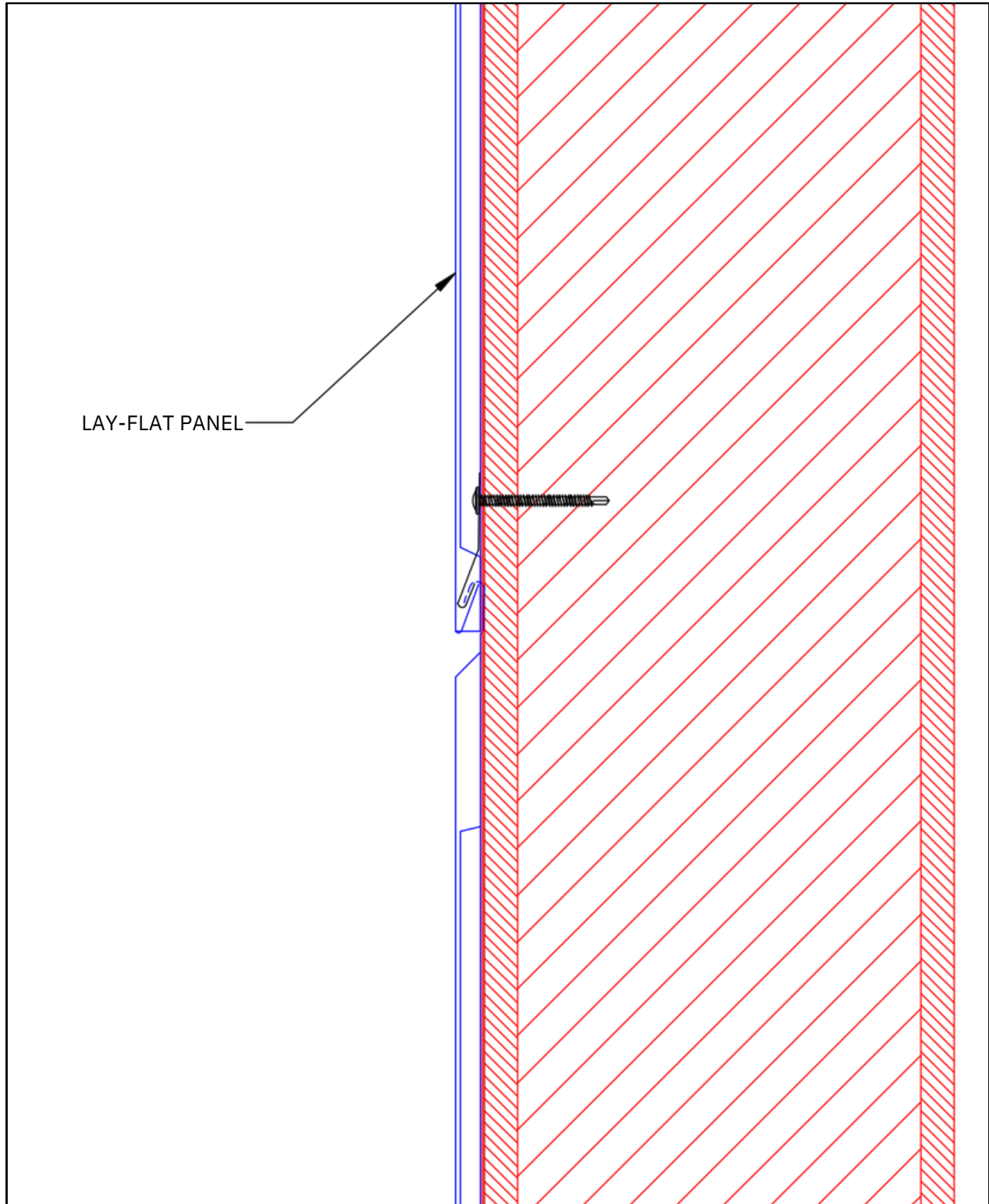
LAY-FLAT PANEL – INSIDE CORNER, DETAIL 8



MATERIAL	COLORS	FINISH	SIZES
Stainless Steel	See website for color selection chart	Bright (BA) Mill (2B)	24 gauge - 18 gauge (.025" - .050" nominal) operational thickness dependent upon panel sizes 0.375" Deep Maximum Length: 116"
ZALMAG®	N/A	Natural Pre-Patina II Black	24 gauge - 18 gauge (.025" - .050" nominal) operational thickness dependent upon panel sizes 0.375" Deep Maximum Length: 116"



MATERIAL	COLORS	FINISH	SIZES
Stainless Steel	See website for color selection chart	Bright (BA) Mill (2B)	24 gauge - 18 gauge (.025" - .050" nominal) operational thickness dependent upon panel sizes 0.375" Deep Maximum Length: 116"
ZALMAG®	N/A	Natural Pre-Patina II Black	24 gauge - 18 gauge (.025" - .050" nominal) operational thickness dependent upon panel sizes 0.375" Deep Maximum Length: 116"



MATERIAL	COLORS	FINISH	SIZES
Stainless Steel	See website for color selection chart	Bright (BA) Mill (2B)	24 gauge - 18 gauge (.025" - .050" nominal) operational thickness dependent upon panel sizes 0.375" Deep Maximum Length: 116"
ZALMAG®	N/A	Natural Pre-Patina II Black	24 gauge - 18 gauge (.025" - .050" nominal) operational thickness dependent upon panel sizes 0.375" Deep Maximum Length: 116"

BOLDNESS THAT
INSPIRES.

BRILLIANCE THAT
ENDURES.



MILLENNIUM
FORMS

www.millenniumforms.com | info@millenniumforms.com | P. 262.723.7778
550 East Centralia Street Elkhorn, WI 53121 U.S.A.