

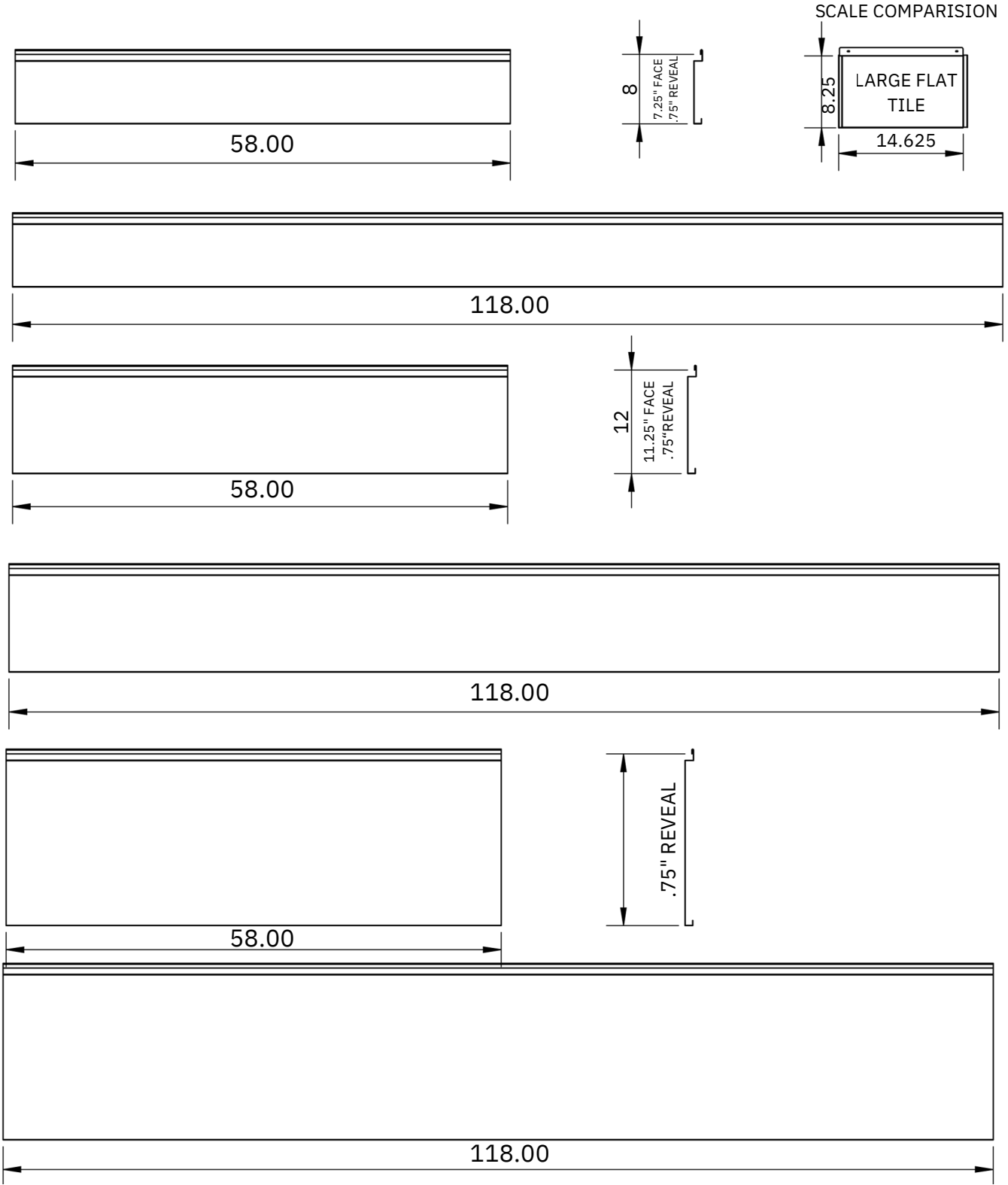


# FLUSH REVEAL PANELS



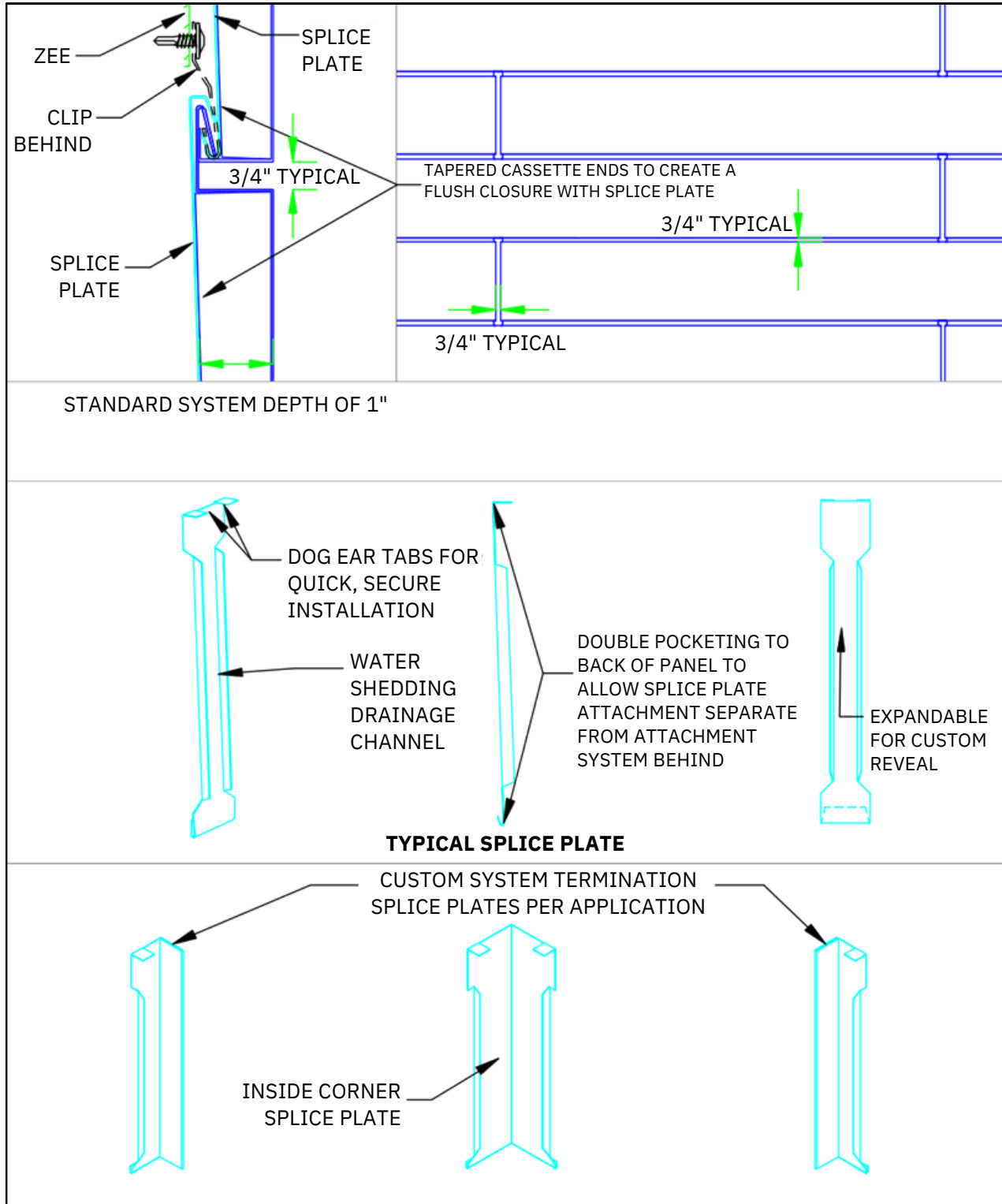
MILLENNIUM  
FORMS

# HORIZONTAL FLUSH REVEAL CASSETTE JOINT SIZES



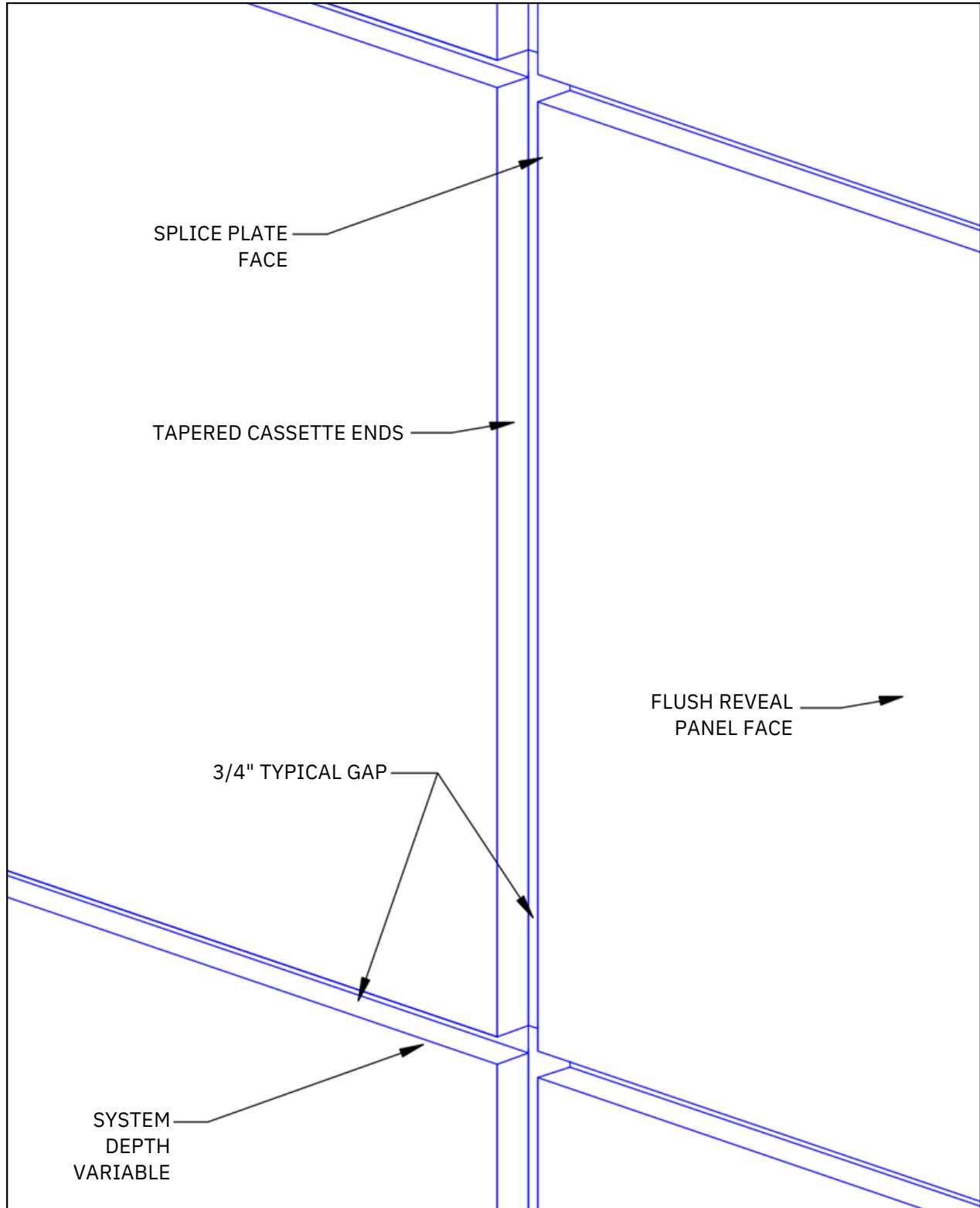
MATERIAL	COLORS	FINISH	SIZES
Stainless Steel	See website for color selection chart	Bright (BA) Mill (2B)	24 gauge - 20 gauge (.025" - .038" nominal) operational thickness dependent upon panel sizes 1" Deep Maximum Length: Cassette 118", Butt Joint 120"
ZALMAG®	N/A	Natural Pre-Patina II Black	24 gauge - 20 gauge (.025" - .038" nominal) operational thickness dependent upon panel sizes 1" Deep Maximum Length: Cassette 118", Butt Joint 120"

# HORIZONTAL FLUSH REVEAL CASSETTE JOINT – SYSTEM DETAILS (SPlice PLATE)



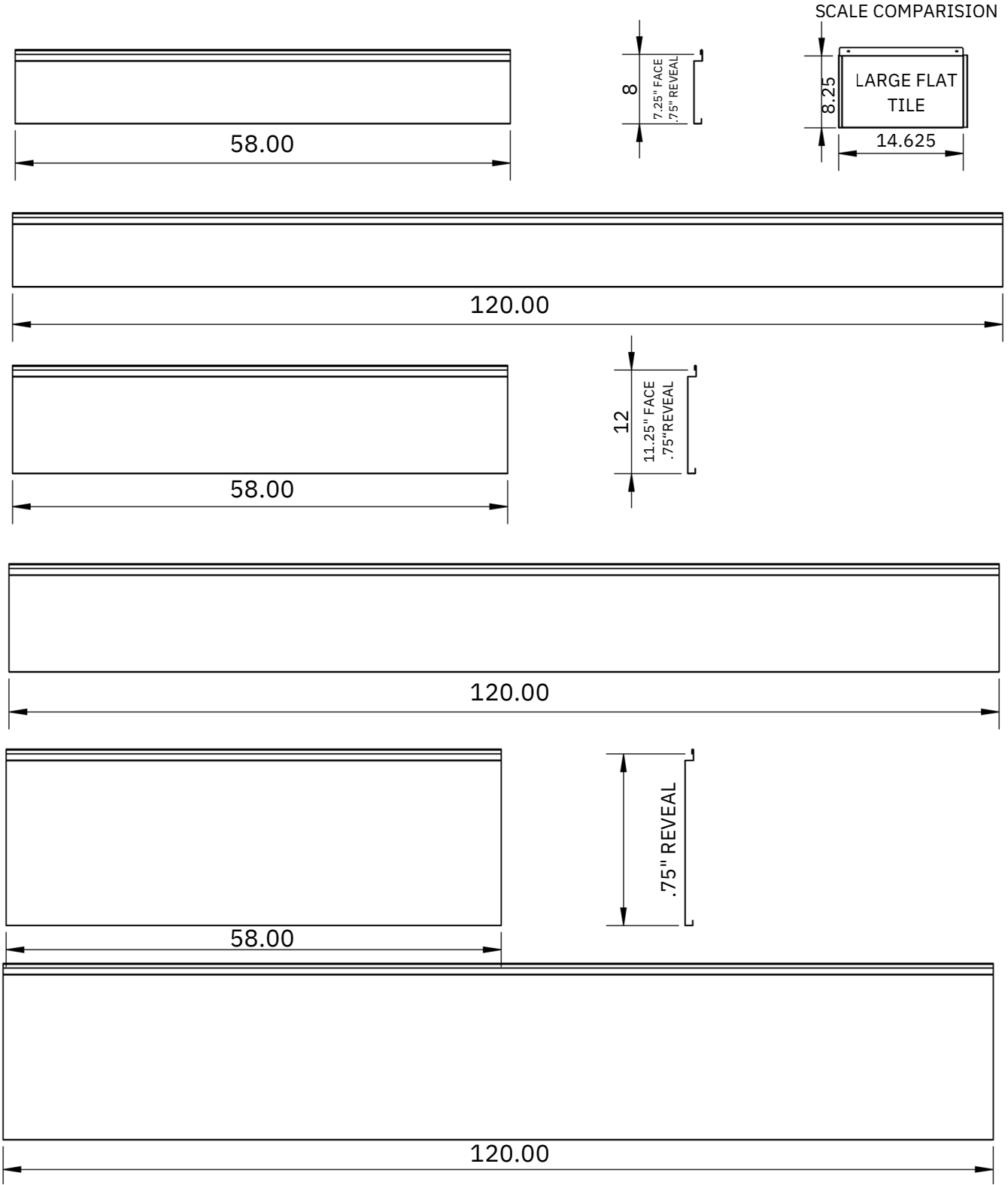
MATERIAL	COLORS	FINISH	SIZES
Stainless Steel	See website for color selection chart	Bright (BA) Mill (2B)	24 gauge - 20 gauge (.025" - .038" nominal) operational thickness dependent upon panel sizes 1" Deep Maximum Length: Cassette 118", Butt Joint 120"
ZALMAG®	N/A	Natural Pre-Patina II Black	24 gauge - 20 gauge (.025" - .038" nominal) operational thickness dependent upon panel sizes 1" Deep Maximum Length: Cassette 118", Butt Joint 120"

# HORIZONTAL FLUSH REVEAL CASSETTE JOINT – INSTALLED ISOMETRIC (SPLICE PLATE JOINTS)



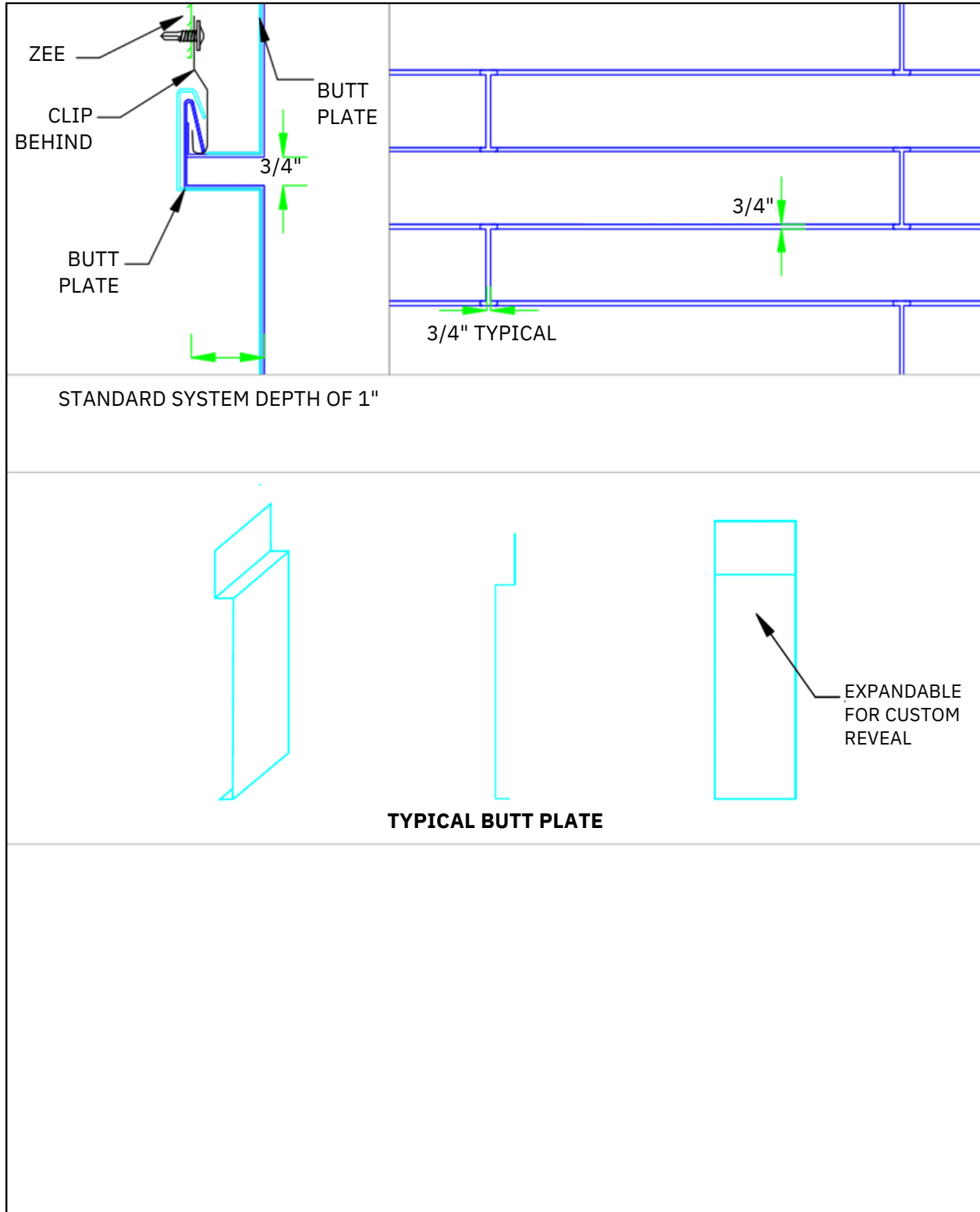
MATERIAL	COLORS	FINISH	SIZES
Stainless Steel	See website for color selection chart	Bright (BA) Mill (2B)	24 gauge - 20 gauge (.025" - .038" nominal) operational thickness dependent upon panel sizes 1" Deep Maximum Length: Cassette 118", Butt Joint 120"
ZALMAG®	N/A	Natural Pre-Patina II Black	24 gauge - 20 gauge (.025" - .038" nominal) operational thickness dependent upon panel sizes 1" Deep Maximum Length: Cassette 118", Butt Joint 120"

# HORIZONTAL FLUSH REVEAL BUTT JOINT SIZES



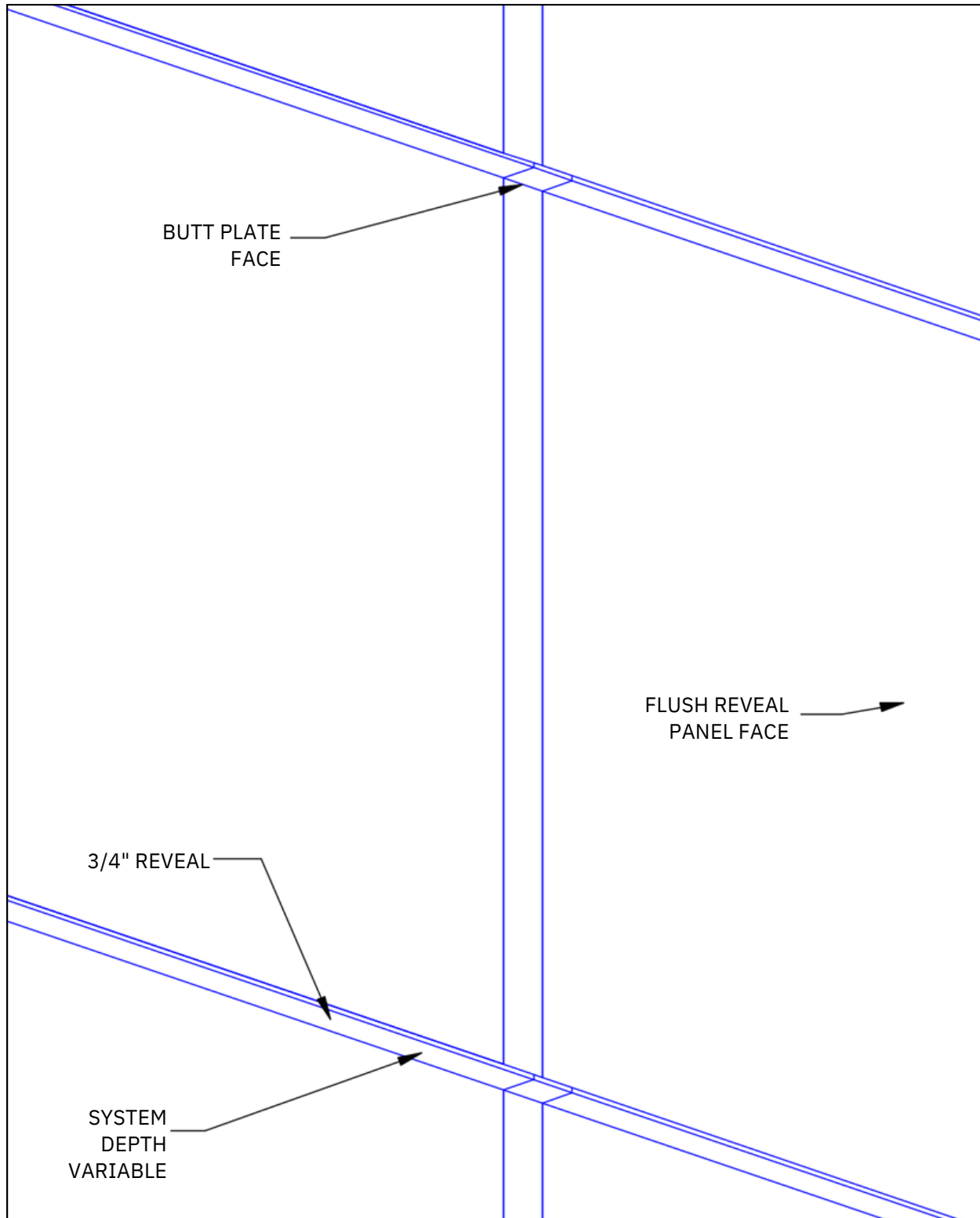
MATERIAL	COLORS	FINISH	SIZES
Stainless Steel	See website for color selection chart	Bright (BA) Mill (2B)	24 gauge - 20 gauge (.025" - .038" nominal) operational thickness dependent upon panel sizes 1" Deep Maximum Length: Cassette 118", Butt Joint 120"
ZALMAG®	N/A	Natural Pre-Patina II Black	24 gauge - 20 gauge (.025" - .038" nominal) operational thickness dependent upon panel sizes 1" Deep Maximum Length: Cassette 118", Butt Joint 120"

# HORIZONTAL FLUSH REVEAL BUTT JOINT – SYSTEM DETAILS (BUTT PLATE)



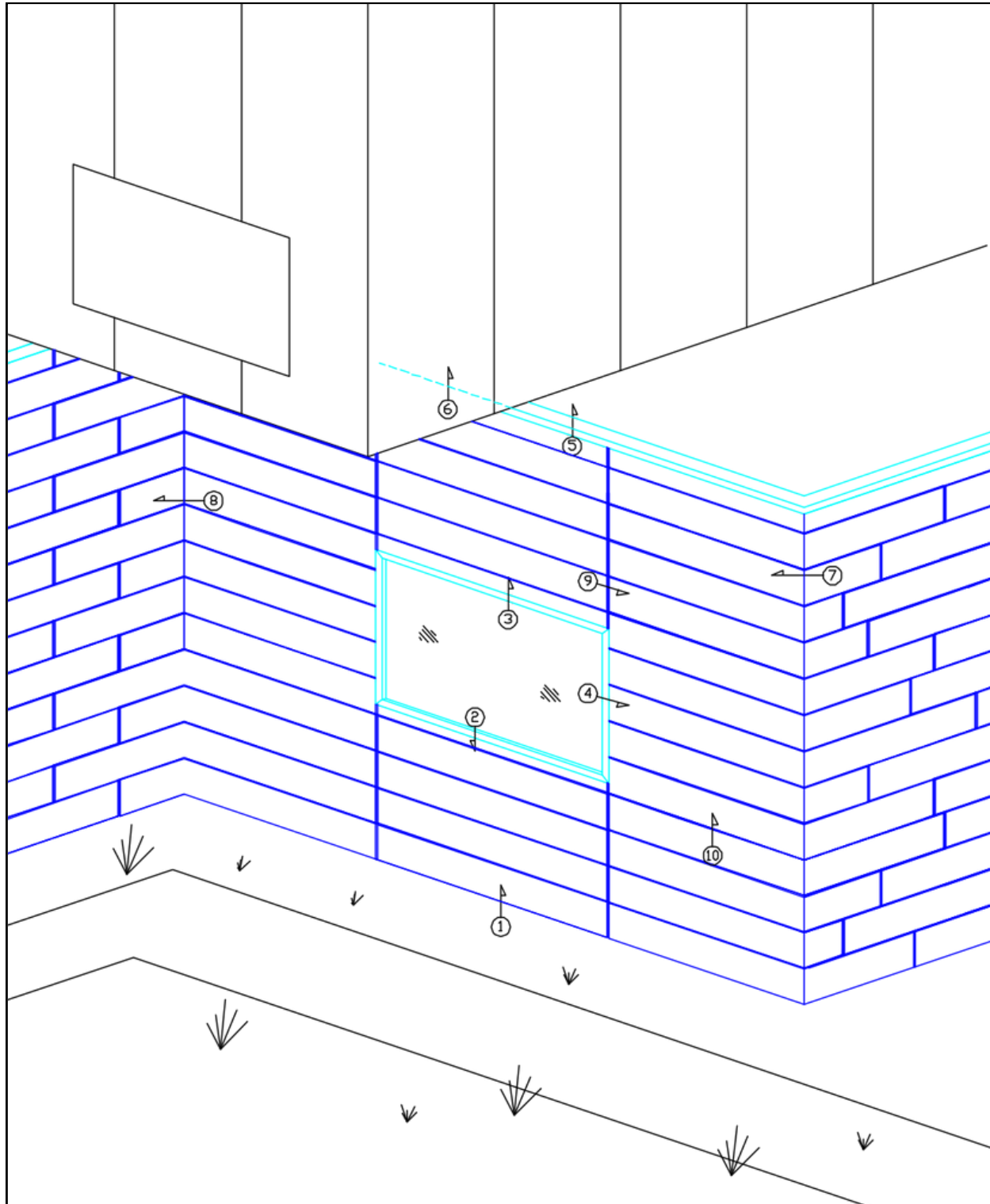
MATERIAL	COLORS	FINISH	SIZES
Stainless Steel	See website for color selection chart	Bright (BA) Mill (2B)	24 gauge - 20 gauge (.025" - .038" nominal) operational thickness dependent upon panel sizes 1" Deep Maximum Length: Cassette 118", Butt Joint 120"
ZALMAG®	N/A	Natural Pre-Patina II Black	24 gauge - 20 gauge (.025" - .038" nominal) operational thickness dependent upon panel sizes 1" Deep Maximum Length: Cassette 118", Butt Joint 120"

# HORIZONTAL FLUSH REVEAL BUTT JOINT –SYSTEM DETAILS (BUTT PLATE)

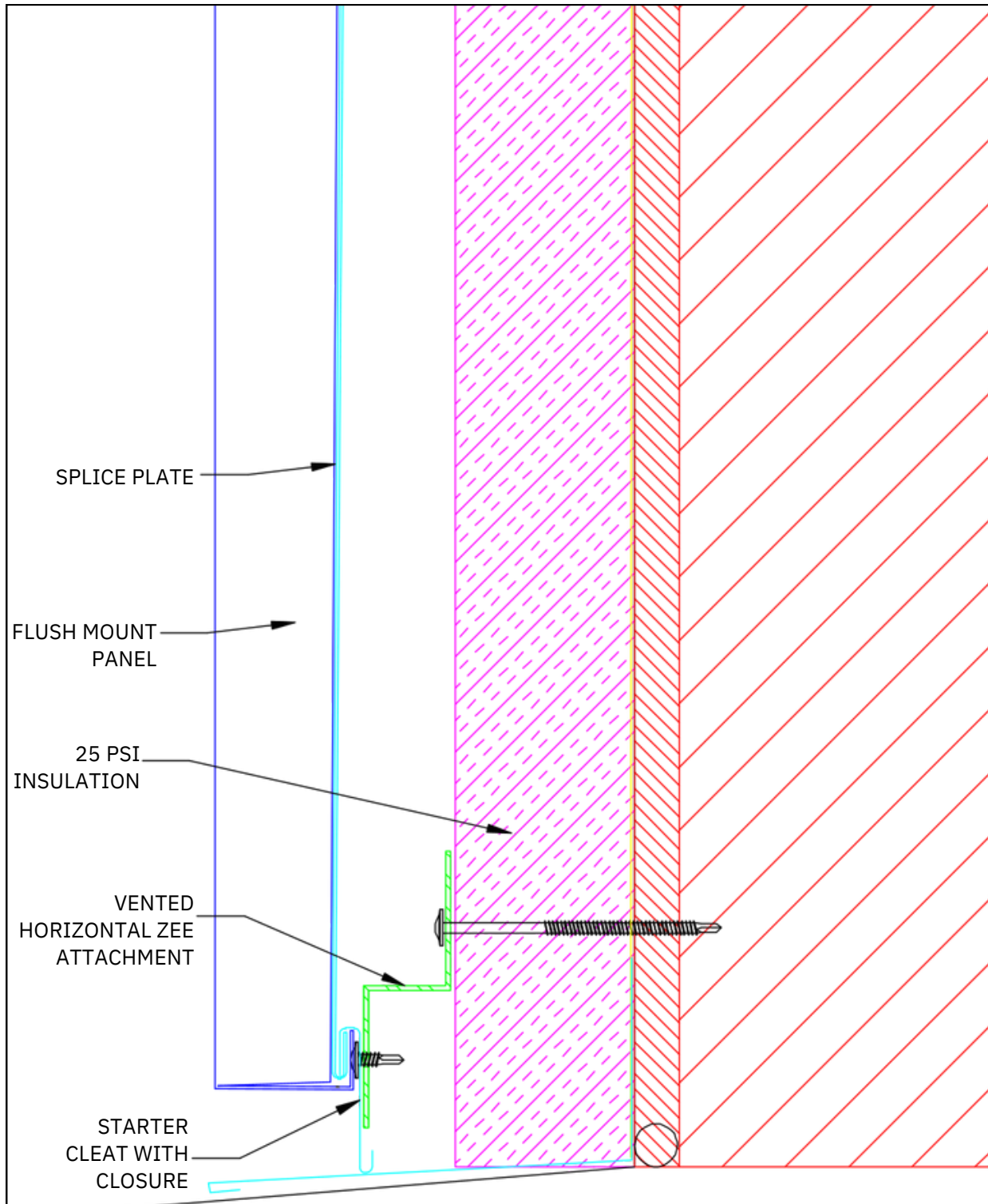


MATERIAL	COLORS	FINISH	SIZES
Stainless Steel	See website for color selection chart	Bright (BA) Mill (2B)	24 gauge - 20 gauge (.025" - .038" nominal) operational thickness dependent upon panel sizes 1" Deep Maximum Length: Cassette 118", Butt Joint 120"
ZALMAG®	N/A	Natural Pre-Patina II Black	24 gauge - 20 gauge (.025" - .038" nominal) operational thickness dependent upon panel sizes 1" Deep Maximum Length: Cassette 118", Butt Joint 120"

# HORIZONTAL FLUSH REVEAL SYSTEM – DETAIL WALL

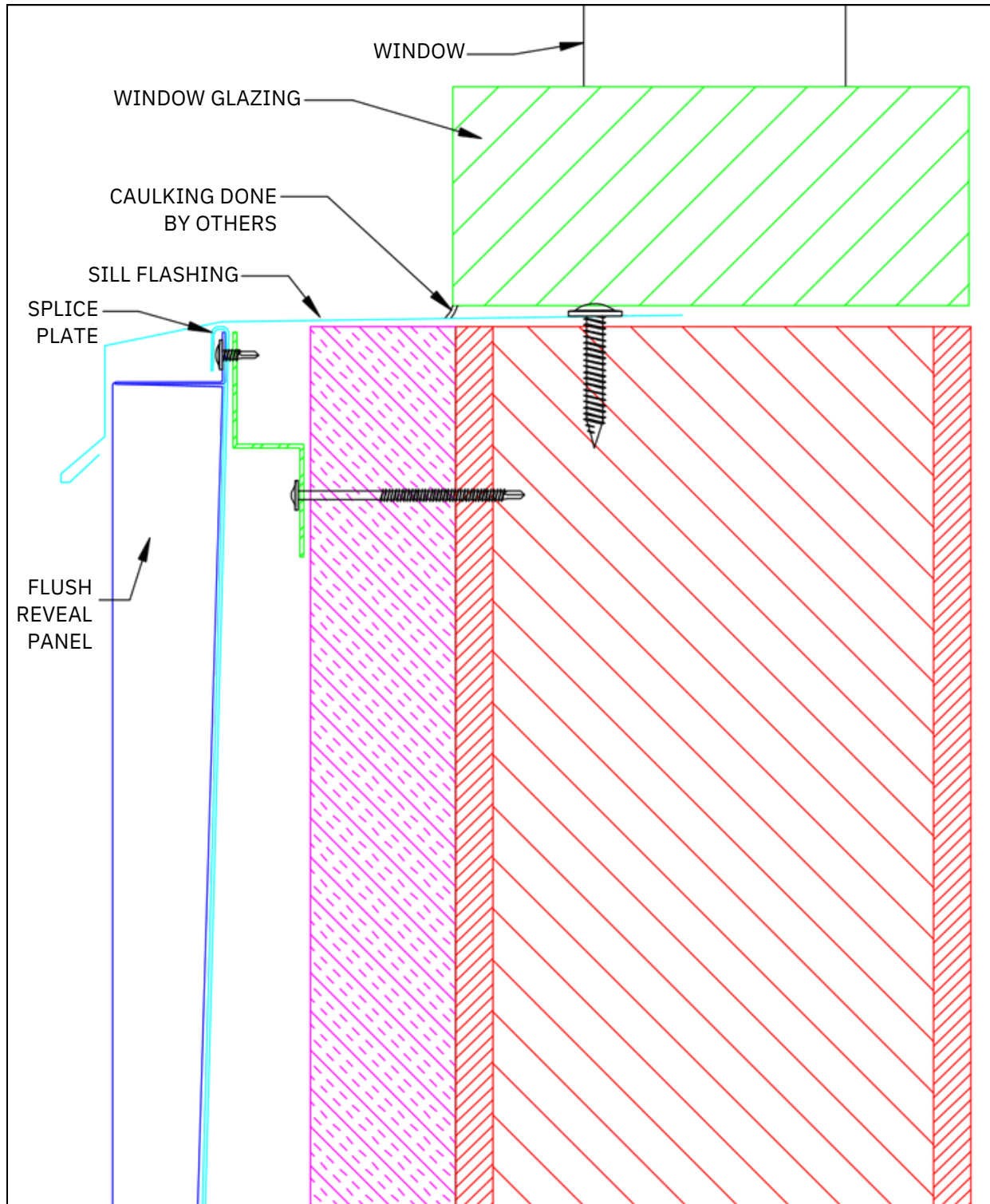


MATERIAL	COLORS	FINISH	SIZES
Stainless Steel	See website for color selection chart	Bright (BA) Mill (2B)	24 gauge - 20 gauge (.025" - .038" nominal) operational thickness dependent upon panel sizes 1" Deep Maximum Length: Cassette 118", Butt Joint 120"
ZALMAG®	N/A	Natural Pre-Patina II Black	24 gauge - 20 gauge (.025" - .038" nominal) operational thickness dependent upon panel sizes 1" Deep Maximum Length: Cassette 118", Butt Joint 120"



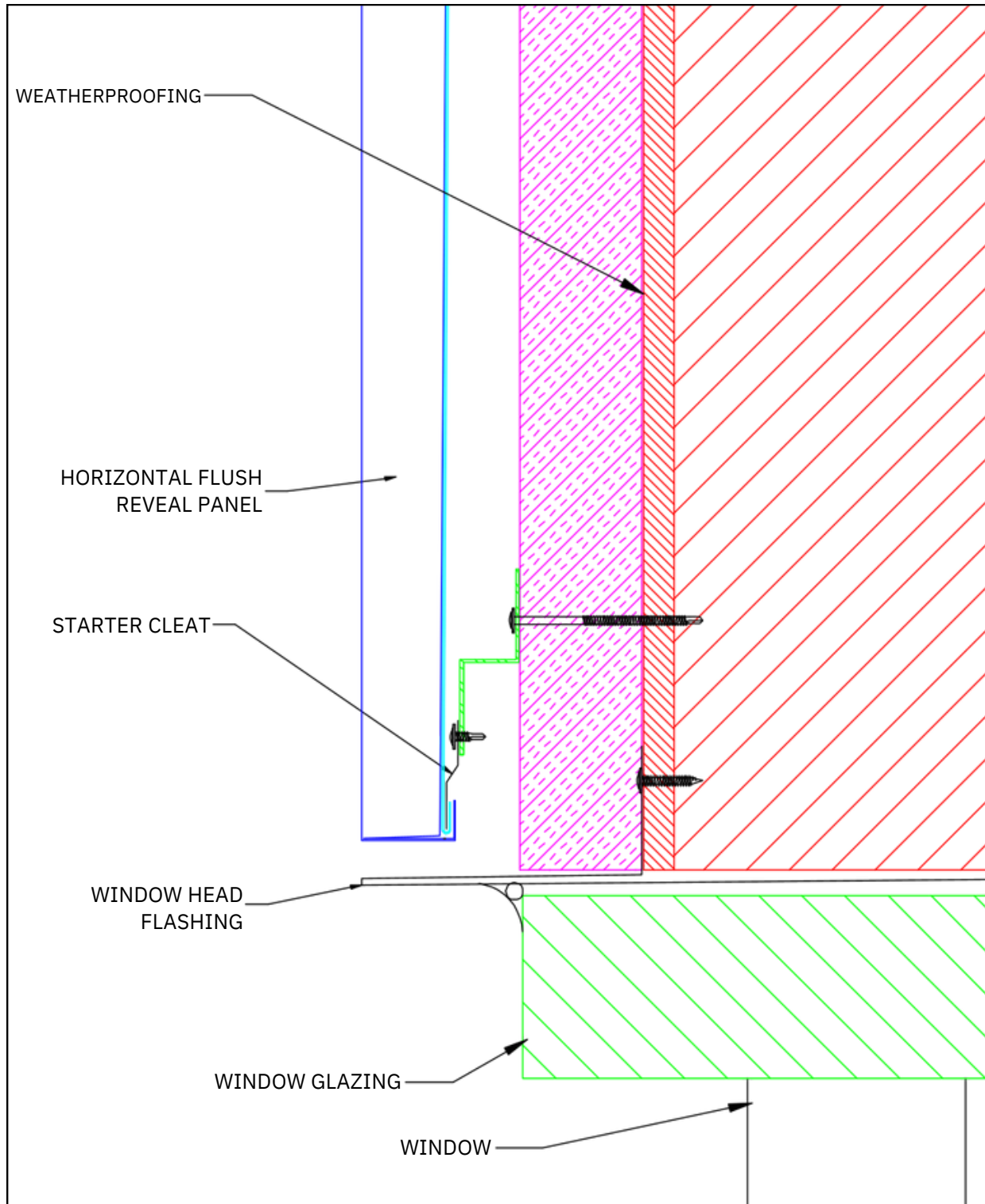
MATERIAL	COLORS	FINISH	SIZES
Stainless Steel	See website for color selection chart	Bright (BA) Mill (2B)	24 gauge - 20 gauge (.025" - .038" nominal) operational thickness dependent upon panel sizes 1" Deep Maximum Length: Cassette 118", Butt Joint 120"
ZALMAG®	N/A	Natural Pre-Patina II Black	24 gauge - 20 gauge (.025" - .038" nominal) operational thickness dependent upon panel sizes 1" Deep Maximum Length: Cassette 118", Butt Joint 120"

# HORIZONTAL FLUSH REVEAL SYSTEM – WINDOW SILL, DETAIL 2



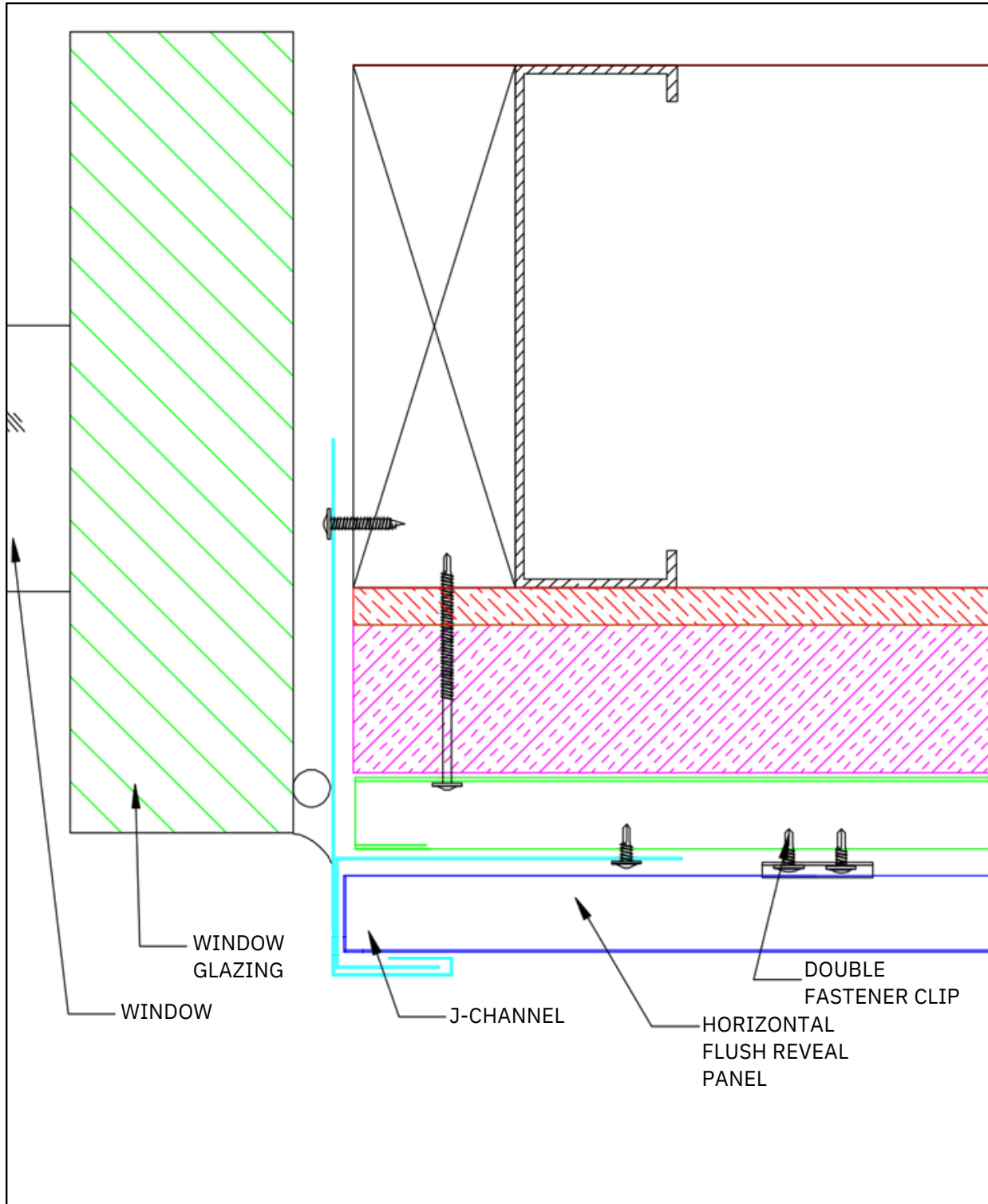
MATERIAL	COLORS	FINISH	SIZES
Stainless Steel	See website for color selection chart	Bright (BA) Mill (2B)	24 gauge - 20 gauge (.025" - .038" nominal) operational thickness dependent upon panel sizes 1" Deep Maximum Length: Cassette 118", Butt Joint 120"
ZALMAG®	N/A	Natural Pre-Patina II Black	24 gauge - 20 gauge (.025" - .038" nominal) operational thickness dependent upon panel sizes 1" Deep Maximum Length: Cassette 118", Butt Joint 120"

# HORIZONTAL FLUSH REVEAL SYSTEM – WINDOW HEAD, DETAIL 3

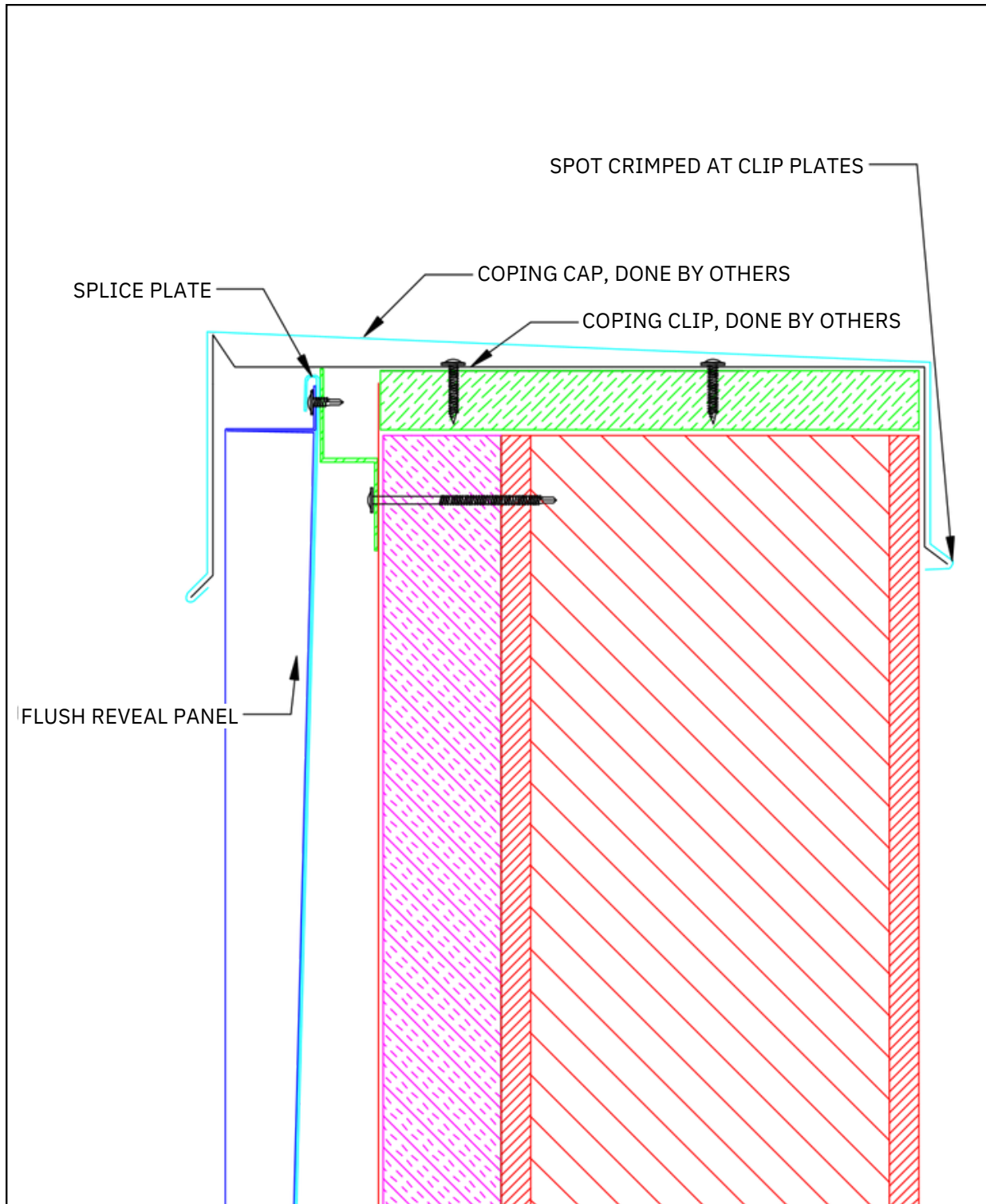


MATERIAL	COLORS	FINISH	SIZES
Stainless Steel	See website for color selection chart	Bright (BA) Mill (2B)	24 gauge - 20 gauge (.025" - .038" nominal) operational thickness dependent upon panel sizes 1" Deep Maximum Length: Cassette 118", Butt Joint 120"
ZALMAG®	N/A	Natural Pre-Patina II Black	24 gauge - 20 gauge (.025" - .038" nominal) operational thickness dependent upon panel sizes 1" Deep Maximum Length: Cassette 118", Butt Joint 120"

# HORIZONTAL FLUSH REVEAL SYSTEM – WINDOW JAM, DETAIL 4

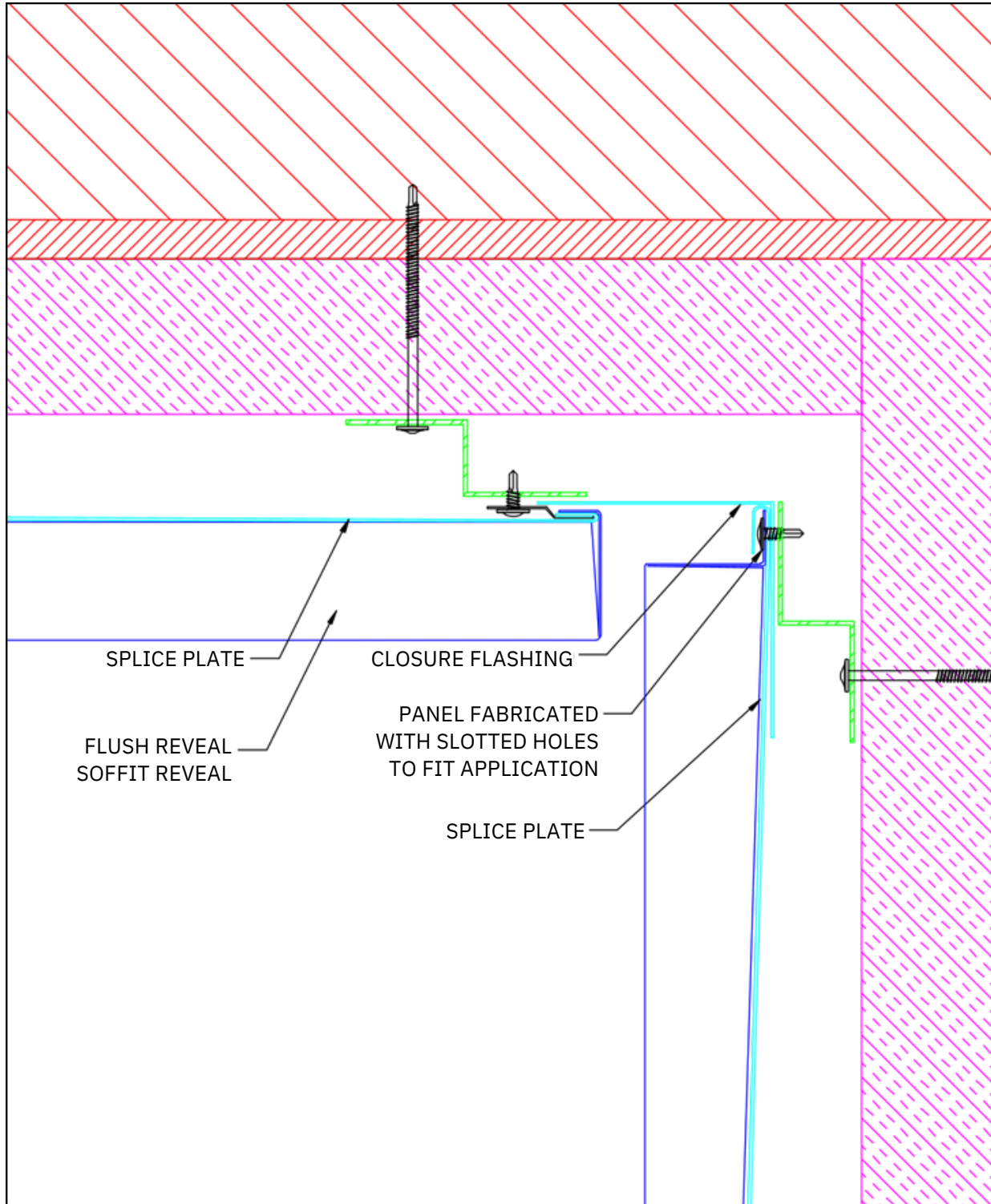


MATERIAL	COLORS	FINISH	SIZES
Stainless Steel	See website for color selection chart	Bright (BA) Mill (2B)	24 gauge - 20 gauge (.025" - .038" nominal) operational thickness dependent upon panel sizes 1" Deep Maximum Length: Cassette 118", Butt Joint 120"
ZALMAG®	N/A	Natural Pre-Patina II Black	24 gauge - 20 gauge (.025" - .038" nominal) operational thickness dependent upon panel sizes 1" Deep Maximum Length: Cassette 118", Butt Joint 120"



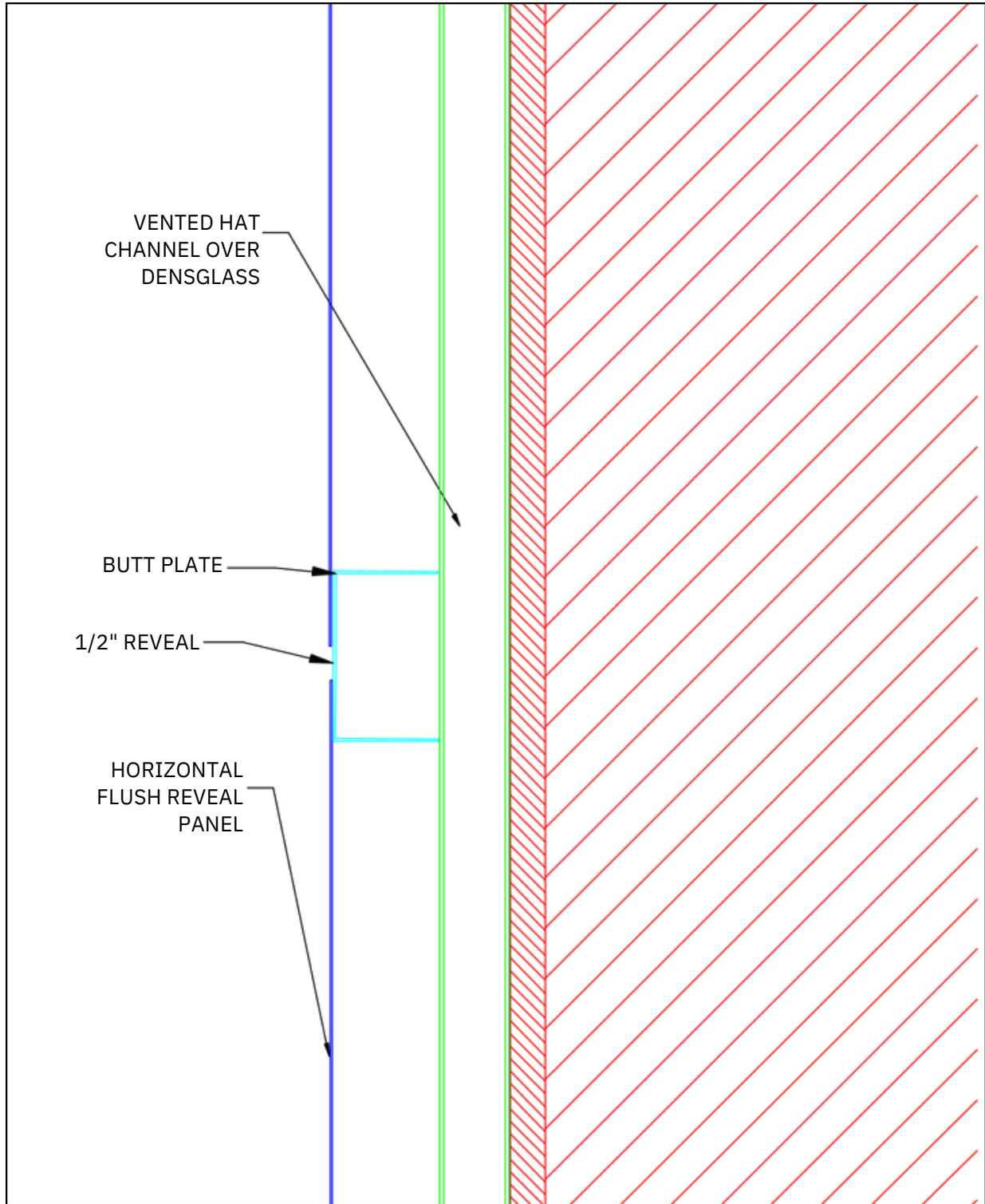
MATERIAL	COLORS	FINISH	SIZES
Stainless Steel	See website for color selection chart	Bright (BA) Mill (2B)	24 gauge - 20 gauge (.025" - .038" nominal) operational thickness dependent upon panel sizes 1" Deep Maximum Length: Cassette 118", Butt Joint 120"
ZALMAG®	N/A	Natural Pre-Patina II Black	24 gauge - 20 gauge (.025" - .038" nominal) operational thickness dependent upon panel sizes 1" Deep Maximum Length: Cassette 118", Butt Joint 120"

# HORIZONTAL FLUSH REVEAL SYSTEM – SOFFIT RETURN, DETAIL 5B



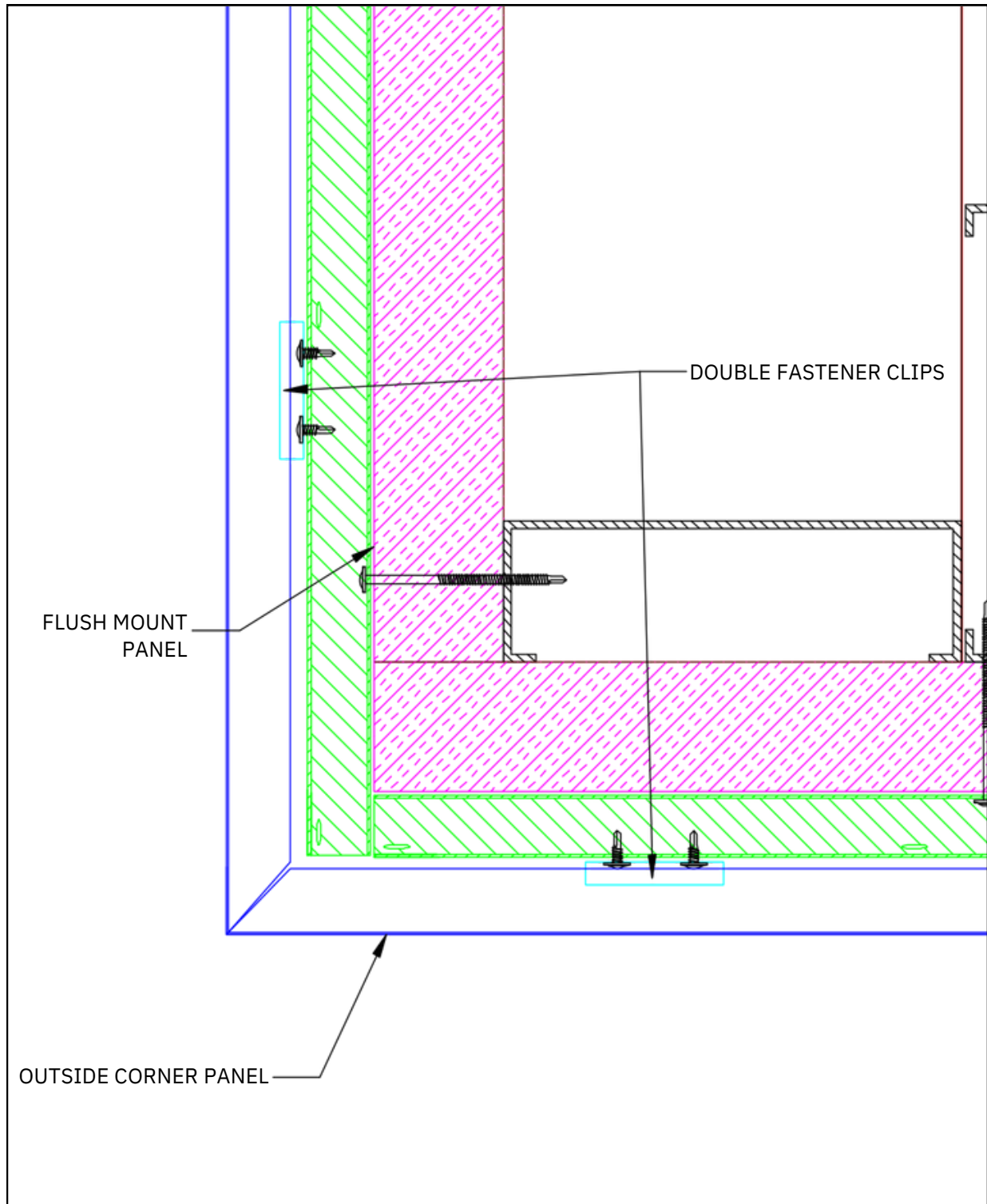
MATERIAL	COLORS	FINISH	SIZES
Stainless Steel	See website for color selection chart	Bright (BA) Mill (2B)	24 gauge - 20 gauge (.025" - .038" nominal) operational thickness dependent upon panel sizes 1" Deep Maximum Length: Cassette 118", Butt Joint 120"
ZALMAG®	N/A	Natural Pre-Patina II Black	24 gauge - 20 gauge (.025" - .038" nominal) operational thickness dependent upon panel sizes 1" Deep Maximum Length: Cassette 118", Butt Joint 120"

# HORIZONTAL FLUSH REVEAL SYSTEM – VERTICAL BUTT JOINT, DETAIL 6



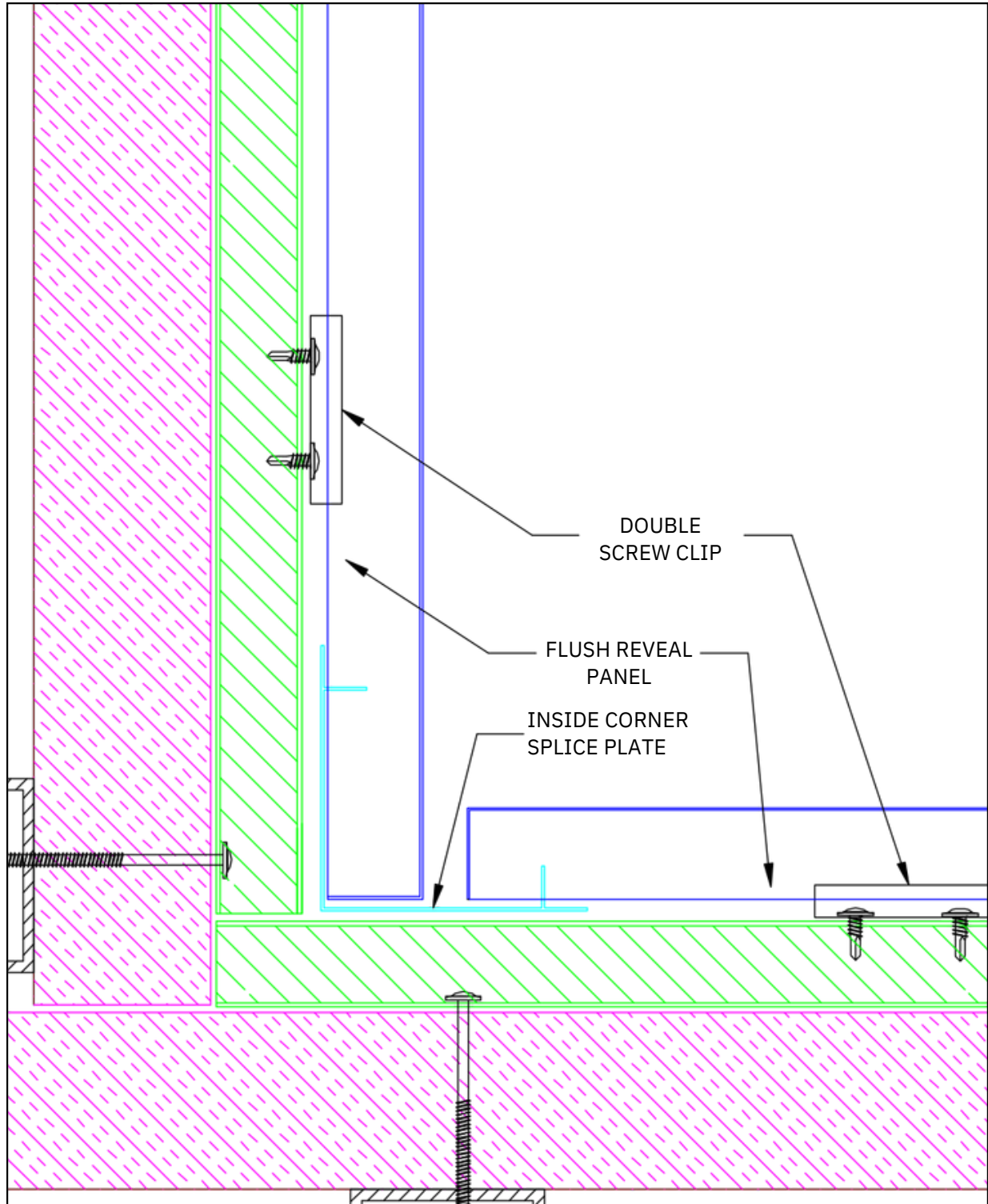
MATERIAL	COLORS	FINISH	SIZES
Stainless Steel	See website for color selection chart	Bright (BA) Mill (2B)	24 gauge - 20 gauge (.025" - .038" nominal) operational thickness dependent upon panel sizes 1" Deep Maximum Length: Cassette 118", Butt Joint 120"
ZALMAG®	N/A	Natural Pre-Patina II Black	24 gauge - 20 gauge (.025" - .038" nominal) operational thickness dependent upon panel sizes 1" Deep Maximum Length: Cassette 118", Butt Joint 120"

# HORIZONTAL FLUSH REVEAL SYSTEM – OUTSIDE CORNER, DETAIL 7



MATERIAL	COLORS	FINISH	SIZES
Stainless Steel	See website for color selection chart	Bright (BA) Mill (2B)	24 gauge - 20 gauge (.025" - .038" nominal) operational thickness dependent upon panel sizes 1" Deep Maximum Length: Cassette 118", Butt Joint 120"
ZALMAG®	N/A	Natural Pre-Patina II Black	24 gauge - 20 gauge (.025" - .038" nominal) operational thickness dependent upon panel sizes 1" Deep Maximum Length: Cassette 118", Butt Joint 120"

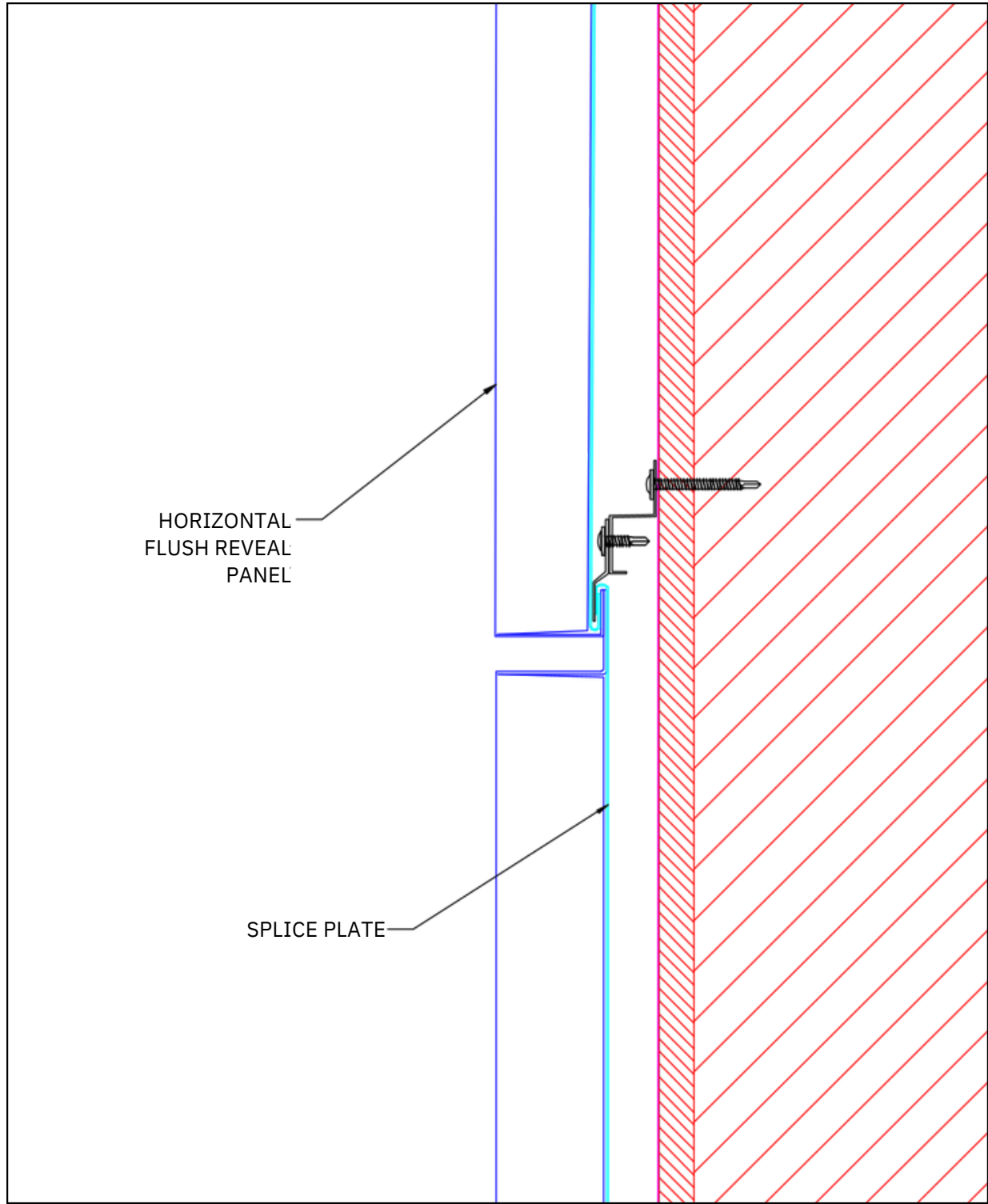
# HORIZONTAL FLUSH REVEAL SYSTEM – INSIDE CORNER, DETAIL 8



MATERIAL	COLORS	FINISH	SIZES
Stainless Steel	See website for color selection chart	Bright (BA) Mill (2B)	24 gauge - 20 gauge (.025" - .038" nominal) operational thickness dependent upon panel sizes 1" Deep Maximum Length: Cassette 118", Butt Joint 120"
ZALMAG®	N/A	Natural Pre-Patina II Black	24 gauge - 20 gauge (.025" - .038" nominal) operational thickness dependent upon panel sizes 1" Deep Maximum Length: Cassette 118", Butt Joint 120"

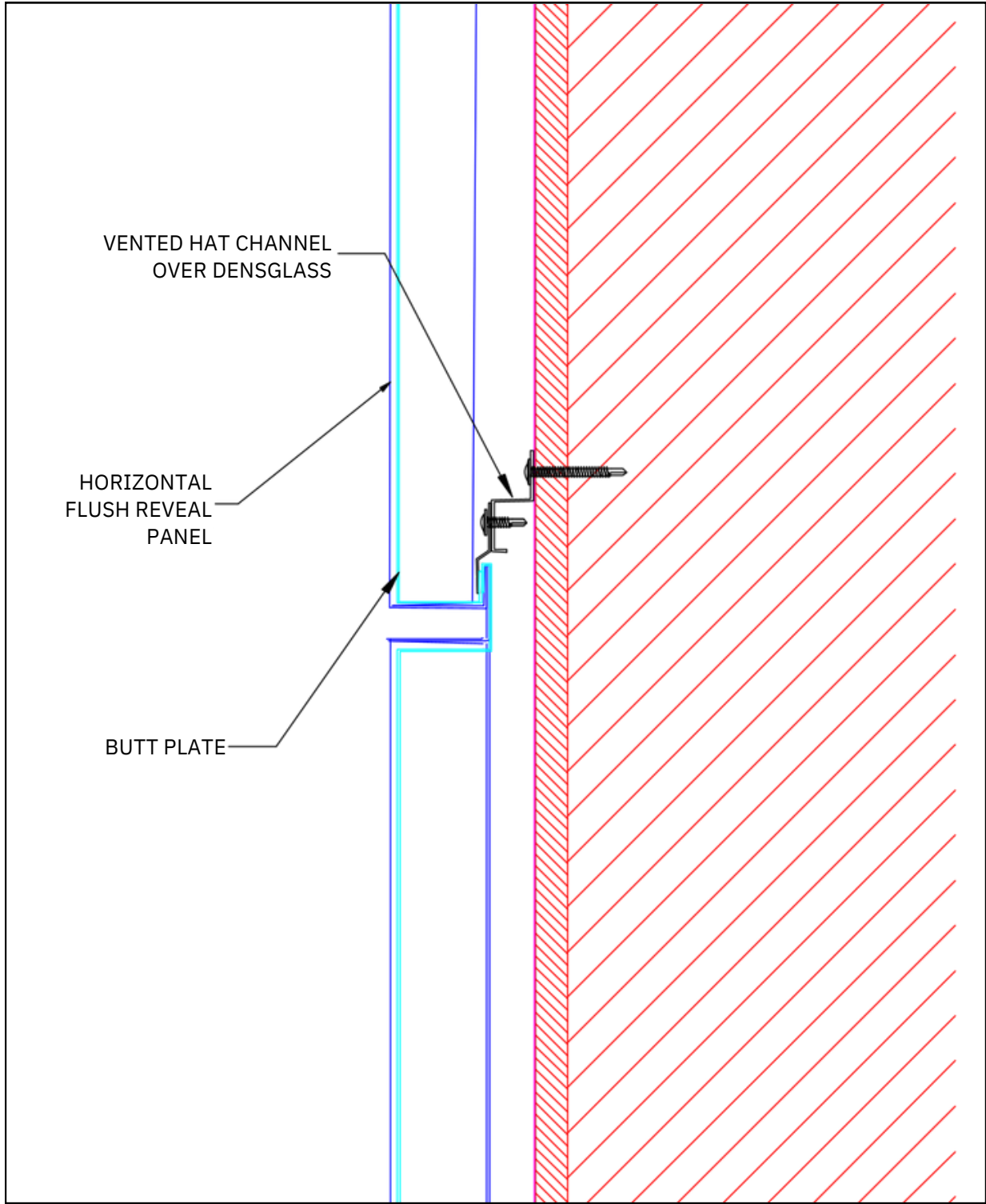
# HORIZONTAL FLUSH REVEAL SYSTEM – CASSETTE JOINT

## HORIZONTAL VIEW, DETAIL 9



MATERIAL	COLORS	FINISH	SIZES
Stainless Steel	See website for color selection chart	Bright (BA) Mill (2B)	24 gauge - 20 gauge (.025" - .038" nominal) operational thickness dependent upon panel sizes 1" Deep Maximum Length: Cassette 118", Butt Joint 120"
ZALMAG®	N/A	Natural Pre-Patina II Black	24 gauge - 20 gauge (.025" - .038" nominal) operational thickness dependent upon panel sizes 1" Deep Maximum Length: Cassette 118", Butt Joint 120"

# HORIZONTAL FLUSH REVEAL SYSTEM – BUTT JOINT HORIZONTAL VIEW, DETAIL 10



MATERIAL	COLORS	FINISH	SIZES
Stainless Steel	See website for color selection chart	Bright (BA) Mill (2B)	24 gauge - 20 gauge (.025" - .038" nominal) operational thickness dependent upon panel sizes 1" Deep Maximum Length: Cassette 118", Butt Joint 120"
ZALMAG®	N/A	Natural Pre-Patina II Black	24 gauge - 20 gauge (.025" - .038" nominal) operational thickness dependent upon panel sizes 1" Deep Maximum Length: Cassette 118", Butt Joint 120"

BOLDNESS THAT  
INSPIRES.

BRILLIANCE THAT  
ENDURES.



MILLENNIUM  
FORMS

[www.millenniumforms.com](http://www.millenniumforms.com) | [info@millenniumforms.com](mailto:info@millenniumforms.com) | P. 262.723.7778  
550 East Centralia Street Elkhorn, WI 53121 U.S.A.